

Product datasheet

Anti-IL-12RB2 antibody - C-terminal ab230446

3 Images

Overview

Product name	Anti-IL-12RB2 antibody - C-terminal
Description	Rabbit polyclonal to IL-12RB2 - C-terminal
Host species	Rabbit
Tested applications	Suitable for: IHC-P, WB, Flow Cyt
Species reactivity	Reacts with: Human
Immunogen	Synthetic peptide within Human IL-12RB2 aa 756-783 (C terminal) conjugated to keyhole limpet haemocyanin. The exact sequence is proprietary. Database link: Q99665
Positive control	IHC-P: Human liver tissue. WB: MDA-MB435 cell lysate. Flow Cyt: MDA-MB435 cells.
General notes	<p>Reproducibility is key to advancing scientific discovery and accelerating scientists' next breakthrough.</p> <p>Abcam is leading the way with our range of recombinant antibodies, knockout-validated antibodies and knockout cell lines, all of which support improved reproducibility.</p> <p>We are also planning to innovate the way in which we present recommended applications and species on our product datasheets, so that only applications & species that have been tested in our own labs, our suppliers or by selected trusted collaborators are covered by our Abpromise™ guarantee.</p> <p>In preparation for this, we have started to update the applications & species that this product is Abpromise guaranteed for.</p> <p>We are also updating the applications & species that this product has been "predicted to work with," however this information is not covered by our Abpromise guarantee.</p> <p>Applications & species from publications and Abreviews that have not been tested in our own labs or in those of our suppliers are not covered by the Abpromise guarantee.</p> <p>Please check that this product meets your needs before purchasing. If you have any questions, special requirements or concerns, please send us an inquiry and/or contact our Support team ahead of purchase. Recommended alternatives for this product can be found below, as well as customer reviews and Q&As.</p>

Properties

Storage instructions	Shipped at 4°C. Store at +4°C short term (1-2 weeks). Upon delivery aliquot. Store at -20°C long
-----------------------------	--

term. Avoid freeze / thaw cycle.

Storage buffer	Preservative: 0.09% Sodium azide Constituent: PBS
Purity	Protein A purified
Clonality	Polyclonal
Isotype	IgG

Applications

Our [Abpromise guarantee](#) covers the use of **ab230446** in the following tested applications.

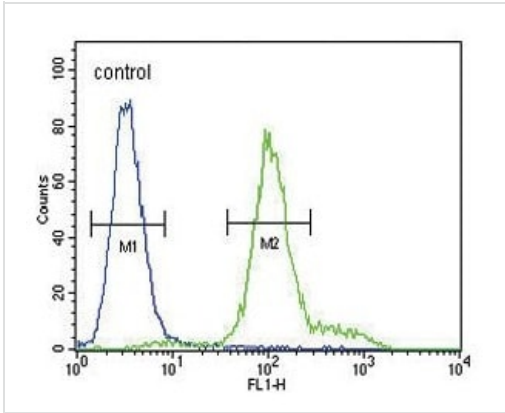
The application notes include recommended starting dilutions; optimal dilutions/concentrations should be determined by the end user.

Application	Abreviews	Notes
IHC-P		1/50. Perform heat mediated antigen retrieval before commencing with IHC staining protocol.
WB		1/1000. Predicted molecular weight: 97 kDa.
Flow Cyt		1/10 - 1/50.

Target

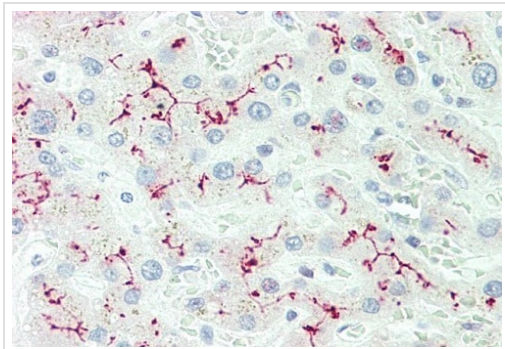
Function	Receptor for interleukin-12. This subunit is the signaling component coupling to the JAK2/STAT4 pathway. Promotes the proliferation of T-cells as well as NK cells. Induces the promotion of T-cells towards the Th1 phenotype by strongly enhancing IFN-gamma production.
Tissue specificity	Isoform 2 is expressed at similar levels in both naive and activated T-cells.
Sequence similarities	Belongs to the type I cytokine receptor family. Type 2 subfamily. Contains 5 fibronectin type-III domains.
Developmental stage	Maximum levels in Th1 cells between day 3 and day 8 of activation.
Domain	The WSXWS motif appears to be necessary for proper protein folding and thereby efficient intracellular transport and cell-surface receptor binding. The box 1 motif is required for JAK interaction and/or activation.
Post-translational modifications	On IL12 binding, phosphorylated on C-terminal tyrosine residues by JAK2. Phosphorylation on Tyr-800 is required for STAT4 binding and activation, and for SOCS3 binding.
Cellular localization	Membrane.

Images



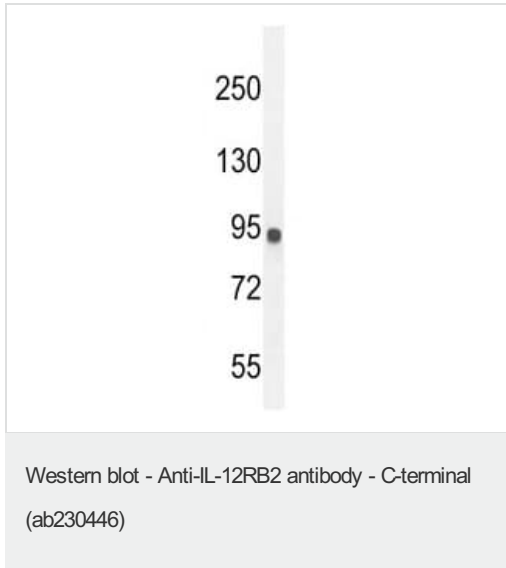
Flow Cytometry - Anti-IL-12RB2 antibody - C-terminal (ab230446)

Flow cytometric analysis of MDA-MB435 cell line labeling IL-12RB2 with ab230446 at 1/10 dilution (right histogram) compared to a negative control cell (left histogram). FITC-conjugated goat-anti-rabbit secondary antibodies were used for the analysis.



Immunohistochemistry (Formalin/PFA-fixed paraffin-embedded sections) - Anti-IL-12RB2 antibody - C-terminal (ab230446)

Formalin-fixed, paraffin-embedded human liver tissue stained for IL-12RB2 using ab230446 at 1/50 dilution in immunohistochemical analysis.



Anti-IL-12RB2 antibody - C-terminal (ab230446) at 1/1000 dilution
+ MDA-MB435 cell lysate at 35 µg

Predicted band size: 97 kDa

Please note: All products are "FOR RESEARCH USE ONLY. NOT FOR USE IN DIAGNOSTIC PROCEDURES"

Our Abpromise to you: Quality guaranteed and expert technical support

- Replacement or refund for products not performing as stated on the datasheet
- Valid for 12 months from date of delivery
- Response to your inquiry within 24 hours
- We provide support in Chinese, English, French, German, Japanese and Spanish
- Extensive multi-media technical resources to help you
- We investigate all quality concerns to ensure our products perform to the highest standards

If the product does not perform as described on this datasheet, we will offer a refund or replacement. For full details of the Abpromise, please visit <https://www.abcam.com/abpromise> or contact our technical team.

Terms and conditions

- Guarantee only valid for products bought direct from Abcam or one of our authorized distributors