

Product datasheet

Anti-IL-15RA antibody [JM7A4] ab91270

3 References 1 Image

Overview

Product name	Anti-IL-15RA antibody [JM7A4]
Description	Mouse monoclonal [JM7A4] to IL-15RA
Host species	Mouse
Tested applications	Suitable for: Flow Cyt
Species reactivity	Reacts with: Human
Immunogen	Recombinant full length protein corresponding to Human IL-15RA.
Positive control	LPS and IFN gamma stimulated PBMCs
General notes	<p>Reproducibility is key to advancing scientific discovery and accelerating scientists' next breakthrough.</p> <p>Abcam is leading the way with our range of recombinant antibodies, knockout-validated antibodies and knockout cell lines, all of which support improved reproducibility.</p> <p>We are also planning to innovate the way in which we present recommended applications and species on our product datasheets, so that only applications & species that have been tested in our own labs, our suppliers or by selected trusted collaborators are covered by our Abpromise™ guarantee.</p> <p>In preparation for this, we have started to update the applications & species that this product is Abpromise guaranteed for.</p> <p>We are also updating the applications & species that this product has been “predicted to work with,” however this information is not covered by our Abpromise guarantee.</p> <p>Applications & species from publications and Abreviews that have not been tested in our own labs or in those of our suppliers are not covered by the Abpromise guarantee.</p> <p>Please check that this product meets your needs before purchasing. If you have any questions, special requirements or concerns, please send us an inquiry and/or contact our Support team ahead of purchase. Recommended alternatives for this product can be found below, as well as customer reviews and Q&As.</p>

Properties

Form	Liquid
Storage instructions	Shipped at 4°C. Store at +4°C short term (1-2 weeks). Store at -20°C or -80°C. Avoid freeze / thaw cycle.

Storage buffer	pH: 7.20 Preservative: 0.09% Sodium azide Constituent: PBS
Purity	Protein A purified
Purification notes	ab91270 is affinity purified
Clonality	Monoclonal
Clone number	JM7A4
Isotype	IgG2b

Applications

Our [Abpromise guarantee](#) covers the use of **ab91270** in the following tested applications.

The application notes include recommended starting dilutions; optimal dilutions/concentrations should be determined by the end user.

Application	Abreviews	Notes
-------------	-----------	-------

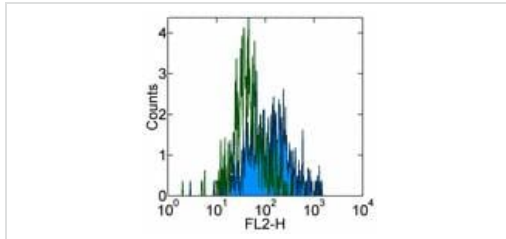
Flow Cyt

Application notes	Flow Cyt: Use 0.5 µg for 10 ⁶ cells. IP: Use at an assay dependent dilution. WB: Use at an assay dependent dilution. Predicted molecular weight: 28 kDa. Not yet tested in other applications. Optimal dilutions/concentrations should be determined by the end user.
--------------------------	--

Target

Function	Receptor for interleukin-15. Expression of different isoforms may alter or interfere with signal transduction. Isoform 5, isoform 6, isoform 7 and isoform 8 do not bind IL15. Signal transduction involves STAT3, STAT5, STAT6, JAK2 (By similarity) and SYK.
Tissue specificity	Isoform 1, isoform 3, isoform 4, isoform 5, isoform 6, isoform 7, isoform 8 and isoform 9 are widely expressed. Expressed in fetal brain with higher expression in the hippocampus and cerebellum than in cortex and thalamus. Higher levels of soluble sIL-15RA form in comparison with membrane-bound forms is present in all brain structures.
Sequence similarities	Contains 1 Sushi (CCP/SCR) domain.
Post-translational modifications	A soluble form (sIL-15RA) arises from proteolytic shedding of the membrane-anchored receptor. The cleavage involves ADAM17/TACE (By similarity). It also binds IL-15 and thus interferes with IL-15 binding to the membrane receptor. Phosphorylated by activated SYK. N-glycosylated and O-glycosylated.
Cellular localization	Secreted > extracellular space; Membrane. Nucleus membrane. Mainly found associated with the nuclear membrane and Endoplasmic reticulum membrane. Golgi apparatus membrane. Cytoplasmic vesicle membrane. Membrane. Isoform 5, isoform 6, isoform 7 and isoform 8 are associated with endoplasmic reticulum, Golgi and cytoplasmic vesicles, but not with the nuclear membrane.

Images



Flow Cytometry - Anti-IL-15RA antibody [JM7A4]
(ab91270)

ab91270 staining IL-15RA in normal Human PBMCs by Flow cytometry.

Normal Human PBMCs were isolated, and cultured in standard conditions for 3 hours. Non adherent cells were removed from culture, and remaining cells were stimulated with LPS and IFN- γ for 24 hours.

Open/green histogram; stained with 0.25 μ g of Purified Mouse IgG2b Isotype Control

Closed/blue histogram; stained with 0.25 μ g of ab91270.

Detection utilised Biotin Anti-Mouse IgG and SA ν -PE.

Cells in the large scatter population were used for analysis.

Please note: All products are "FOR RESEARCH USE ONLY. NOT FOR USE IN DIAGNOSTIC PROCEDURES"

Our Abpromise to you: Quality guaranteed and expert technical support

- Replacement or refund for products not performing as stated on the datasheet
- Valid for 12 months from date of delivery
- Response to your inquiry within 24 hours
- We provide support in Chinese, English, French, German, Japanese and Spanish
- Extensive multi-media technical resources to help you
- We investigate all quality concerns to ensure our products perform to the highest standards

If the product does not perform as described on this datasheet, we will offer a refund or replacement. For full details of the Abpromise, please visit <https://www.abcam.com/abpromise> or contact our technical team.

Terms and conditions

- Guarantee only valid for products bought direct from Abcam or one of our authorized distributors