


Product datasheet

Anti-IL-17RC antibody ab136991

1 Image

Overview

Product name	Anti-IL-17RC antibody
Description	Rabbit polyclonal to IL-17RC
Host species	Rabbit
Tested applications	Suitable for: WB
Species reactivity	Reacts with: Mouse Predicted to work with: Human 
Immunogen	Synthetic peptide corresponding to Human IL-17RC (C terminal).
Positive control	RAW 264.7 cell lysate.
General notes	<p>The Life Science industry has been in the grips of a reproducibility crisis for a number of years. Abcam is leading the way in addressing this with our range of recombinant monoclonal antibodies and knockout edited cell lines for gold-standard validation. Please check that this product meets your needs before purchasing.</p> <p>If you have any questions, special requirements or concerns, please send us an inquiry and/or contact our Support team ahead of purchase. Recommended alternatives for this product can be found below, along with publications, customer reviews and Q&As</p>

Properties

Form	Liquid
Storage instructions	Shipped at 4°C. Store at -20°C.
Storage buffer	pH: 7.40 Preservative: 0.02% Sodium azide Constituents: 48% PBS, 50% Glycerol (glycerin, glycerine), 0.88% Sodium chloride without Mg ²⁺ and Ca ²⁺
Purity	Immunogen affinity purified
Purification notes	ab136991 was affinity-purified from rabbit antiserum by immunogenic peptide affinity-chromatography.
Clonality	Polyclonal
Isotype	IgG

Applications

The Abpromise guarantee

Our [Abpromise guarantee](#) covers the use of ab136991 in the following tested applications.

The application notes include recommended starting dilutions; optimal dilutions/concentrations should be determined by the end user.

Application	Abreviews	Notes
WB		1/500 - 1/1000. Predicted molecular weight: 86 kDa.

Target

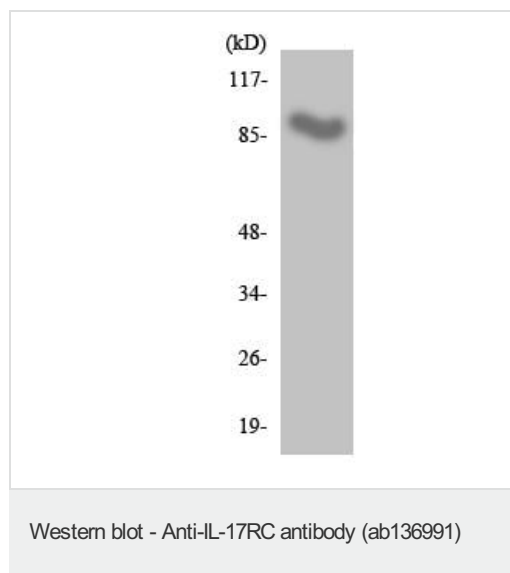
Relevance

IL-17RC is a single pass transmembrane protein that shares limited similarity with the interleukin 17 receptor. It is widely expressed in non leukocyte tissues and forms a heteromeric receptor for IL-17 with IL-17RA. At least four different isoforms are known to exist.

Cellular localization

Cell membrane; Single pass type I membrane protein. Note: soluble isoforms may be produced.

Images



Anti-IL-17RC antibody (ab136991) at 1/500 dilution + RAW 264.7 cell lysate at 30 µg

Predicted band size: 86 kDa

Please note: All products are "FOR RESEARCH USE ONLY. NOT FOR USE IN DIAGNOSTIC PROCEDURES"

Our Abpromise to you: Quality guaranteed and expert technical support

- Replacement or refund for products not performing as stated on the datasheet
- Valid for 12 months from date of delivery
- Response to your inquiry within 24 hours
- We provide support in Chinese, English, French, German, Japanese and Spanish
- Extensive multi-media technical resources to help you
- We investigate all quality concerns to ensure our products perform to the highest standards

If the product does not perform as described on this datasheet, we will offer a refund or replacement. For full details of the Abpromise,

please visit <https://www.abcam.com/abpromise> or contact our technical team.

Terms and conditions

- Guarantee only valid for products bought direct from Abcam or one of our authorized distributors