




Product datasheet

Anti-IL-2 Receptor alpha antibody ab235906

[3 Images](#)

Overview

| | |
|----------------------------|---|
| Product name | Anti-IL-2 Receptor alpha antibody |
| Description | Rabbit polyclonal to IL-2 Receptor alpha |
| Host species | Rabbit |
| Tested applications | Suitable for: WB, IHC-P, ICC/IF |
| Species reactivity | Reacts with: Rat, Human Predicted to work with: Chimpanzee, Rhesus monkey  |
| Immunogen | Recombinant fragment corresponding to Human IL-2 Receptor alpha aa 1-200. Database link: P01589  Run BLAST with  Run BLAST with |
| Positive control | WB: Rat spleen lysate. IHC-P: Human glioma tissue. ICC/IF: HepG2 cells. |
| General notes | <p>The Life Science industry has been in the grips of a reproducibility crisis for a number of years. Abcam is leading the way in addressing this with our range of recombinant monoclonal antibodies and knockout edited cell lines for gold-standard validation. Please check that this product meets your needs before purchasing.</p> <p>If you have any questions, special requirements or concerns, please send us an inquiry and/or contact our Support team ahead of purchase. Recommended alternatives for this product can be found below, along with publications, customer reviews and Q&As</p> |

Properties

| | |
|-----------------------------|---|
| Form | Liquid |
| Storage instructions | Shipped at 4°C. Store at +4°C short term (1-2 weeks). Upon delivery aliquot. Store at -20°C long term. Avoid freeze / thaw cycle. |
| Storage buffer | pH: 7.40 Constituents: PBS, 50% Glycerol (glycerin, glycerine), 0.03% Proclin 300 |
| Purity | Protein G purified |
| Purification notes | Purity >95%. |
| Clonality | Polyclonal |
| Isotype | IgG |

Applications

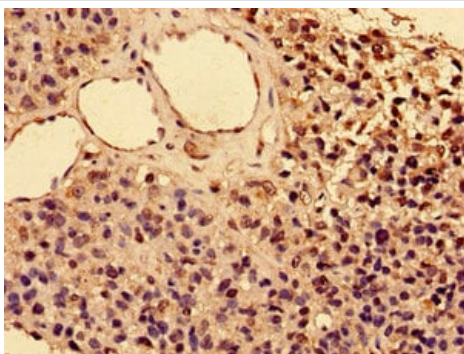
The Abpromise guarantee Our **Abpromise guarantee** covers the use of ab235906 in the following tested applications. The application notes include recommended starting dilutions; optimal dilutions/concentrations should be determined by the end user.

| Application | Abreviews | Notes |
|-------------|-----------|---|
| WB | | 1/500 - 1/5000. Predicted molecular weight: 31 kDa. |
| IHC-P | | 1/20 - 1/200. |
| ICC/IF | | 1/50 - 1/200. |

Target

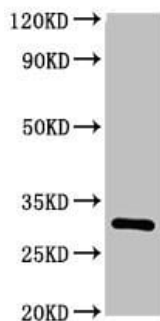
| | |
|-------------------------------|--|
| Function | Receptor for interleukin-2. |
| Involvement in disease | Genetic variations in IL2RA are associated with susceptibility to diabetes mellitus insulin-dependent type 10 (IDDM10) [MIM:601942]. A multifactorial disorder of glucose homeostasis that is characterized by susceptibility to ketoacidosis in the absence of insulin therapy. Clinical features are polydipsia, polyphagia and polyuria which result from hyperglycemia-induced osmotic diuresis and secondary thirst. These derangements result in long-term complications that affect the eyes, kidneys, nerves, and blood vessels. |
| Sequence similarities | Contains 2 Sushi (CCP/SCR) domains. |
| Cellular localization | Membrane. |

Images



Paraffin-embedded human glioma tissue stained for IL2 Receptor alpha using ab235906 at 1/100 dilution in immunohistochemical analysis.

Immunohistochemistry (Formalin/PFA-fixed paraffin-embedded sections) - Anti-IL-2 Receptor alpha antibody (ab235906)



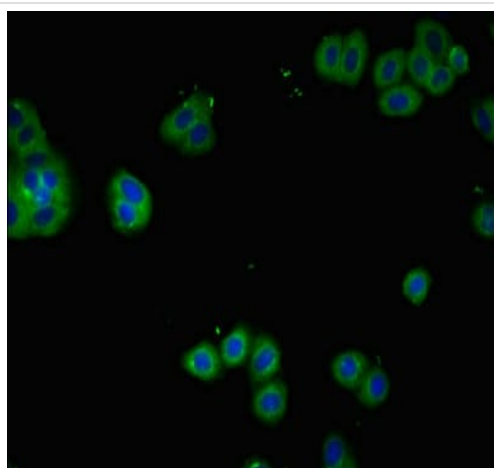
Western blot - Anti-IL-2 Receptor alpha antibody
(ab235906)

Anti-IL-2 Receptor alpha antibody (ab235906) at 1/500 dilution +
Rat spleen lysate

Secondary

Goat polyclonal to rabbit IgG at 1/50000 dilution

Predicted band size: 31 kDa



Immunocytochemistry/ Immunofluorescence - Anti-
IL-2 Receptor alpha antibody (ab235906)

HepG2 (human liver hepatocellular carcinoma cell line) cells stained
for IL2 Receptor alpha (green) using ab235906 at 1/100 dilution in
ICC/IF, followed by Alexa Fluor 488[®] conjugated Goat Anti-Rabbit
IgG (H+L).

Please note: All products are "FOR RESEARCH USE ONLY. NOT FOR USE IN DIAGNOSTIC PROCEDURES"

Our Abpromise to you: Quality guaranteed and expert technical support

- Replacement or refund for products not performing as stated on the datasheet
- Valid for 12 months from date of delivery
- Response to your inquiry within 24 hours
- We provide support in Chinese, English, French, German, Japanese and Spanish
- Extensive multi-media technical resources to help you
- We investigate all quality concerns to ensure our products perform to the highest standards

If the product does not perform as described on this datasheet, we will offer a refund or replacement. For full details of the Abpromise, please visit <https://www.abcam.com/abpromise> or contact our technical team.

Terms and conditions

- Guarantee only valid for products bought direct from Abcam or one of our authorized distributors