

## Product datasheet

# Anti-IL-2 Receptor alpha antibody [Basiliximab] ab245687

[5 Images](#)

### Overview

---

<b>Product name</b>	Anti-IL-2 Receptor alpha antibody [Basiliximab]
<b>Description</b>	Rabbit monoclonal [Basiliximab] to IL-2 Receptor alpha
<b>Host species</b>	Rabbit
<b>Specificity</b>	This antibody recognizes human IL-2R and binds to the epitope (116)ERIYHFV(122) within the extracellular domain of the CD25 subunit. Binding is abolished when 2 or more residues within the epitope are mutated. This epitope overlaps with the interaction site of CD25 and IL-2. CD25 is found in the high-affinity IL-2R ( $\alpha\beta\gamma$ ) – T cells only express CD25 upon activation. IL-2 binding to IL-2R on T cells modulates proliferation and differentiation.
<b>Tested applications</b>	<b>Suitable for:</b> Flow Cyt, IHC-P
<b>Species reactivity</b>	<b>Reacts with:</b> Rat, Human, Cynomolgus monkey, Rhesus monkey
<b>Immunogen</b>	Tissue, cells or virus corresponding to IL-2 Receptor alpha. CTC 16 cells.
<b>Positive control</b>	IHC-P: Rat spleen and thymus tissue. Flow Cyt: Human, rhesus monkey and cynomolgus monkey lymphocytes.
<b>General notes</b>	<p>Reproducibility is key to advancing scientific discovery and accelerating scientists' next breakthrough.</p> <p>Abcam is leading the way with our range of recombinant antibodies, knockout-validated antibodies and knockout cell lines, all of which support improved reproducibility.</p> <p>We are also planning to innovate the way in which we present recommended applications and species on our product datasheets, so that only applications &amp; species that have been tested in our own labs, our suppliers or by selected trusted collaborators are covered by our Abpromise™ guarantee.</p> <p>In preparation for this, we have started to update the applications &amp; species that this product is Abpromise guaranteed for.</p> <p>We are also updating the applications &amp; species that this product has been “predicted to work with,” however this information is not covered by our Abpromise guarantee.</p> <p>Applications &amp; species from publications and Abreviews that have not been tested in our own labs or in those of our suppliers are not covered by the Abpromise guarantee.</p> <p>Please check that this product meets your needs before purchasing. If you have any questions, special requirements or concerns, please send us an inquiry and/or contact our Support team ahead of purchase. Recommended alternatives for this product can be found below, as well as</p>

customer reviews and Q&As.

## Properties

---

<b>Form</b>	Liquid
<b>Storage instructions</b>	Shipped at 4°C. Store at +4°C short term (1-2 weeks). Upon delivery aliquot. Store at -20°C long term. Avoid freeze / thaw cycle.
<b>Storage buffer</b>	Preservative: 0.02% Proclin 300 Constituent: 99% PBS
<b>Purity</b>	Protein A purified
<b>Clonality</b>	Monoclonal
<b>Clone number</b>	Basiliximab
<b>Isotype</b>	IgG
<b>Light chain type</b>	kappa

## Applications

---

Our [Abpromise guarantee](#) covers the use of **ab245687** in the following tested applications.

The application notes include recommended starting dilutions; optimal dilutions/concentrations should be determined by the end user.

Application	Abreviews	Notes
Flow Cyt		Use a concentration of 1 µg/ml.
IHC-P		Use a concentration of 5 µg/ml.

---

## Target

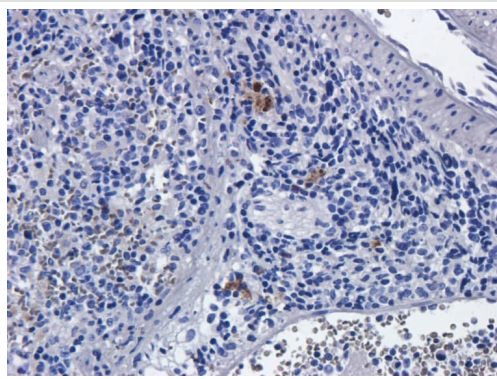
---

<b>Function</b>	Receptor for interleukin-2.
<b>Involvement in disease</b>	Genetic variations in IL2RA are associated with susceptibility to diabetes mellitus insulin-dependent type 10 (IDDM10) [MIM:601942]. A multifactorial disorder of glucose homeostasis that is characterized by susceptibility to ketoacidosis in the absence of insulin therapy. Clinical features are polydipsia, polyphagia and polyuria which result from hyperglycemia-induced osmotic diuresis and secondary thirst. These derangements result in long-term complications that affect the eyes, kidneys, nerves, and blood vessels.
<b>Sequence similarities</b>	Contains 2 Sushi (CCP/SCR) domains.
<b>Cellular localization</b>	Membrane.

---

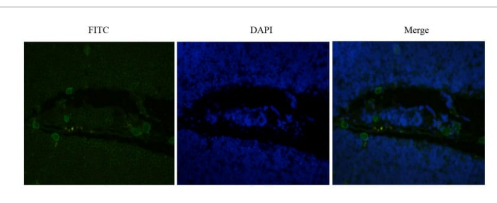
## Images

---



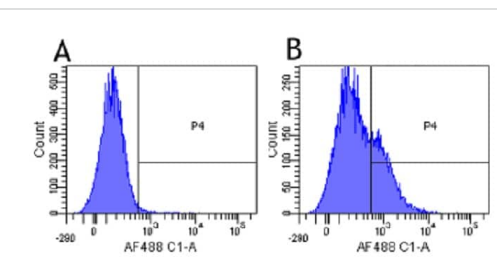
Formalin-fixed rat spleen tissue stained for IL-2 Receptor alpha with ab245687 at 5 µg/ml in immunohistochemical analysis.

Immunohistochemistry (Formalin/PFA-fixed paraffin-embedded sections) - Anti-IL-2 Receptor alpha antibody [Basiliximab] (ab245687)



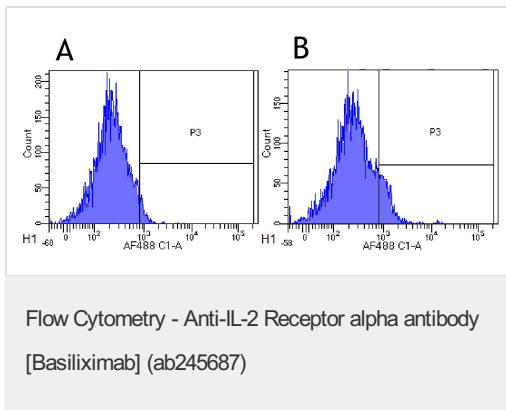
Formaldehyde-fixed rat thymus tissue stained for IL-2 Receptor alpha with ab245687 at 5 µg/ml in immunohistochemical analysis. Detected with an FITC-conjugated secondary antibody.

Immunohistochemistry (Formalin/PFA-fixed paraffin-embedded sections) - Anti-IL-2 Receptor alpha antibody [Basiliximab] (ab245687)

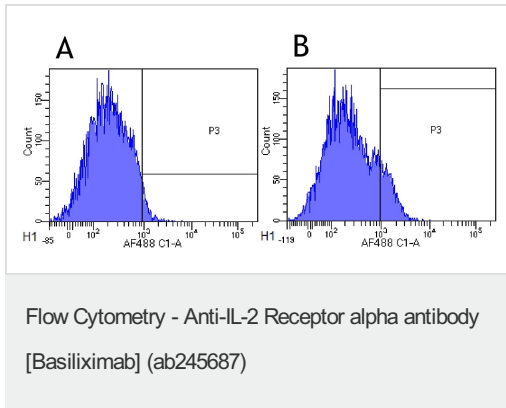


Human lymphocytes were stained with an isotype control (Panel A) or ab245687 (Panel B) at a concentration of 1 µg/ml for 30 mins at RT. After washing, bound antibody was detected using an AF488 conjugated donkey anti-rabbit antibody (ab150073).

Flow Cytometry - Anti-IL-2 Receptor alpha antibody [Basiliximab] (ab245687)



Rhesus monkey lymphocytes were stained with an isotype control (Panel A) or ab245687 (Panel B) at a concentration of 1 µg/ml for 30 mins at RT. After washing, bound antibody was detected using an AF488 conjugated donkey anti-rabbit antibody (ab150073).



Cynomolgus monkey lymphocytes were stained with an isotype control (Panel A) or ab245687 (Panel B) at a concentration of 1 µg/ml for 30 mins at RT. After washing, bound antibody was detected using an AF488 conjugated donkey anti-rabbit antibody (ab150073).

**Please note:** All products are "FOR RESEARCH USE ONLY. NOT FOR USE IN DIAGNOSTIC PROCEDURES"

### Our Abpromise to you: Quality guaranteed and expert technical support

- Replacement or refund for products not performing as stated on the datasheet
- Valid for 12 months from date of delivery
- Response to your inquiry within 24 hours
- We provide support in Chinese, English, French, German, Japanese and Spanish
- Extensive multi-media technical resources to help you
- We investigate all quality concerns to ensure our products perform to the highest standards

If the product does not perform as described on this datasheet, we will offer a refund or replacement. For full details of the Abpromise, please visit <https://www.abcam.com/abpromise> or contact our technical team.

### Terms and conditions

- Guarantee only valid for products bought direct from Abcam or one of our authorized distributors