

Product datasheet

Anti-IL-2 Receptor alpha antibody [PC61] ab86908

2 References 1 Image

Overview

<b>Product name</b>	Anti-IL-2 Receptor alpha antibody [PC61]
<b>Description</b>	Rat monoclonal [PC61] to IL-2 Receptor alpha
<b>Host species</b>	Rat
<b>Tested applications</b>	<b>Suitable for:</b> Flow Cyt
<b>Species reactivity</b>	<b>Reacts with:</b> Mouse
<b>Immunogen</b>	The details of the immunogen for this antibody are not available.
<b>Positive control</b>	Mouse splenocytes, stimulated with 5 ug/ml ConA for three days prior to testing.

Properties

<b>Form</b>	Liquid
<b>Storage instructions</b>	Shipped at 4°C. Upon delivery aliquot and store at -20°C. Avoid freeze / thaw cycles.
<b>Storage buffer</b>	Constituent: PBS
<b>Purity</b>	Protein G purified
<b>Clonality</b>	Monoclonal
<b>Clone number</b>	PC61
<b>Isotype</b>	IgG1
<b>Light chain type</b>	lambda

Applications

Our [Abpromise guarantee](#) covers the use of **ab86908** in the following tested applications.

The application notes include recommended starting dilutions; optimal dilutions/concentrations should be determined by the end user.

Application	Abreviews	Notes
-------------	-----------	-------

Flow Cyt

**Application notes** Flow Cyt: Use 0.1-0.25µg for 10<sup>6</sup> cells.

Not yet tested in other applications.

Optimal dilutions/concentrations should be determined by the end user.

## Target

---

### Function

Receptor for interleukin-2.

### Involvement in disease

Genetic variations in IL2RA are associated with susceptibility to diabetes mellitus insulin-dependent type 10 (IDDM10) [MIM:601942]. A multifactorial disorder of glucose homeostasis that is characterized by susceptibility to ketoacidosis in the absence of insulin therapy. Clinical features are polydipsia, polyphagia and polyuria which result from hyperglycemia-induced osmotic diuresis and secondary thirst. These derangements result in long-term complications that affect the eyes, kidneys, nerves, and blood vessels.

### Sequence similarities

Contains 2 Sushi (CCP/SCR) domains.

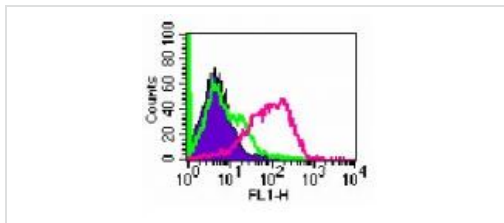
### Cellular localization

Membrane.

---

## Images

---



Flow Cytometry - Anti-IL-2 Receptor alpha antibody  
[PC61] (ab86908)

Flow cytometry analysis in ConA stimulated mouse splenocytes using ab86908 at 0.1  $\mu\text{g}$  per  $1 \times 10^6$  cells.

Shaded histogram represents cells without antibody; green represents isotype control; red represents anti-CD25 antibody.

**Please note:** All products are "FOR RESEARCH USE ONLY. NOT FOR USE IN DIAGNOSTIC PROCEDURES"

## Our Abpromise to you: Quality guaranteed and expert technical support

---

- Replacement or refund for products not performing as stated on the datasheet
- Valid for 12 months from date of delivery
- Response to your inquiry within 24 hours
- We provide support in Chinese, English, French, German, Japanese and Spanish
- Extensive multi-media technical resources to help you
- We investigate all quality concerns to ensure our products perform to the highest standards

If the product does not perform as described on this datasheet, we will offer a refund or replacement. For full details of the Abpromise, please visit <https://www.abcam.com/abpromise> or contact our technical team.

## Terms and conditions

---

- Guarantee only valid for products bought direct from Abcam or one of our authorized distributors