

Product datasheet

Anti-IL-8 antibody ab106350

4 References 2 Images

Overview

Product name	Anti-IL-8 antibody
Description	Rabbit polyclonal to IL-8
Host species	Rabbit
Tested applications	Suitable for: WB, IHC-P
Species reactivity	Reacts with: Human
Immunogen	Synthetic peptide corresponding to Human IL-8 aa 77-95 (C terminal). Sequence: CLDPKENWVQRVVEKFLKR Run BLAST with Run BLAST with
Positive control	Human appendicitis tissue. Recombinant Human IL8 protein

Properties

Form	Liquid
Storage instructions	Shipped at 4°C. Upon delivery aliquot and store at -20°C. Avoid repeated freeze / thaw cycles.
Storage buffer	Preservatives: 0.025% Thimerosal (merthiolate), 0.025% Sodium azide Constituents: 2.5% BSA, 0.45% Sodium chloride, 0.1% Dibasic monohydrogen sodium phosphate
Purity	Immunogen affinity purified
Clonality	Polyclonal
Isotype	IgG

Applications

Our [Abpromise guarantee](#) covers the use of **ab106350** in the following tested applications.

The application notes include recommended starting dilutions; optimal dilutions/concentrations should be determined by the end user.

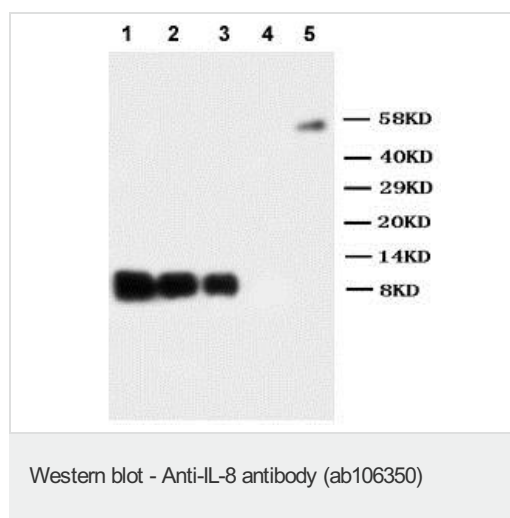
Application	Abreviews	Notes
WB		Use a concentration of 1 µg/ml. Predicted molecular weight: 11 kDa.

Application	Abreviews	Notes
IHC-P		Use a concentration of 1 µg/ml. Perform heat mediated antigen retrieval before commencing with IHC staining protocol.

Target

Function	IL-8 is a chemotactic factor that attracts neutrophils, basophils, and T-cells, but not monocytes. It is also involved in neutrophil activation. It is released from several cell types in response to an inflammatory stimulus. IL-8(6-77) has a 5-10-fold higher activity on neutrophil activation, IL-8(5-77) has increased activity on neutrophil activation and IL-8(7-77) has a higher affinity to receptors CXCR1 and CXCR2 as compared to IL-8(1-77), respectively.
Sequence similarities	Belongs to the intercrine alpha (chemokine CxC) family.
Post-translational modifications	Several N-terminal processed forms are produced by proteolytic cleavage after secretion from at least peripheral blood monocytes, leukocytes and endothelial cells. In general, IL-8(1-77) is referred to as interleukin-8. IL-8(6-77) is the most prominent form.
Cellular localization	Secreted.

Images



All lanes : Anti-IL-8 antibody (ab106350) at 1 µg/ml

Lane 1 : Recombinant Human IL8 protein at 20ng

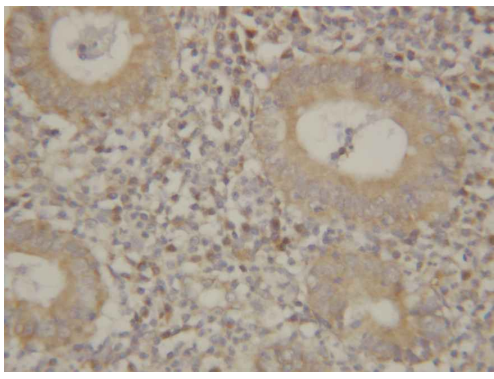
Lane 2 : Recombinant Human IL8 protein at 10ng

Lane 3 : Recombinant Human IL8 protein at 5ng

Lane 4 : Raji whole cell lysate

Lane 5 : MK (55kD)

Predicted band size: 11 kDa



ab106350, at 1 µg/ml, staining IL8 in paraffin-embedded Human appendicitis tissue by Immunohistochemistry.

Immunohistochemistry (Formalin/PFA-fixed paraffin-embedded sections) - Anti-IL-8 antibody (ab106350)

Please note: All products are "FOR RESEARCH USE ONLY. NOT FOR USE IN DIAGNOSTIC PROCEDURES"

Our Abpromise to you: Quality guaranteed and expert technical support

- Replacement or refund for products not performing as stated on the datasheet
- Valid for 12 months from date of delivery
- Response to your inquiry within 24 hours
- We provide support in Chinese, English, French, German, Japanese and Spanish
- Extensive multi-media technical resources to help you
- We investigate all quality concerns to ensure our products perform to the highest standards

If the product does not perform as described on this datasheet, we will offer a refund or replacement. For full details of the Abpromise, please visit <https://www.abcam.com/abpromise> or contact our technical team.

Terms and conditions

- Guarantee only valid for products bought direct from Abcam or one of our authorized distributors