


Product datasheet

Anti-IL2 Receptor beta/p75 antibody [1G11C6] ab233792

[4 Images](#)

Overview

Product name	Anti-IL2 Receptor beta/p75 antibody [1G11C6]
Description	Mouse monoclonal [1G11C6] to IL2 Receptor beta/p75
Host species	Mouse
Tested applications	Suitable for: WB, Flow Cyt
Species reactivity	Reacts with: Human Predicted to work with: Chimpanzee, Cynomolgus monkey 
Immunogen	Recombinant fragment corresponding to Human IL2 Receptor beta/p75 aa 1-250. Expressed in E.coli. Database link: P14784 Run BLAST with Run BLAST with
Positive control	WB: Recombinant human IL2 Receptor beta/p75 (aa 27-240) protein; IL2 Receptor beta/p75 (aa 27-240)-hlgG-Fc-transfected HEK-293 cell lysate. Flow cyt: HL-60 and Jurkat cells.
General notes	<p>The Life Science industry has been in the grips of a reproducibility crisis for a number of years. Abcam is leading the way in addressing this with our range of recombinant monoclonal antibodies and knockout edited cell lines for gold-standard validation. Please check that this product meets your needs before purchasing.</p> <p>If you have any questions, special requirements or concerns, please send us an inquiry and/or contact our Support team ahead of purchase. Recommended alternatives for this product can be found below, along with publications, customer reviews and Q&As</p>

Properties

Form	Liquid
Storage instructions	Shipped at 4°C. Store at +4°C short term (1-2 weeks). Upon delivery aliquot. Store at -20°C long term. Avoid freeze / thaw cycle.
Storage buffer	Preservative: 0.05% Sodium azide Constituent: PBS
Purity	Protein G purified
Purification notes	Purified from tissue culture supernatant.

Clonality	Monoclonal
Clone number	1G11C6
Isotype	IgG2b

Applications

The Abpromise guarantee Our **Abpromise guarantee** covers the use of ab233792 in the following tested applications. The application notes include recommended starting dilutions; optimal dilutions/concentrations should be determined by the end user.

Application	Abreviews	Notes
WB		1/500 - 1/2000.
Flow Cyt		1/200 - 1/400.

Target

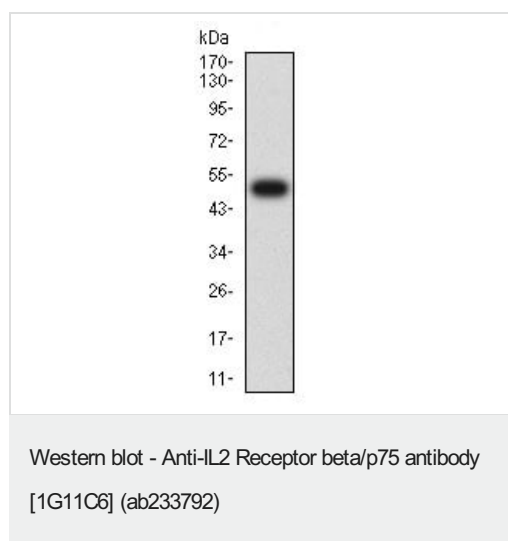
Function Receptor for interleukin-2. This beta subunit is involved in receptor mediated endocytosis and transduces the mitogenic signals of IL2.

Sequence similarities Belongs to the type I cytokine receptor family. Type 4 subfamily. Contains 1 fibronectin type-III domain.

Domain The WSXWS motif appears to be necessary for proper protein folding and thereby efficient intracellular transport and cell-surface receptor binding. The box 1 motif is required for JAK interaction and/or activation.

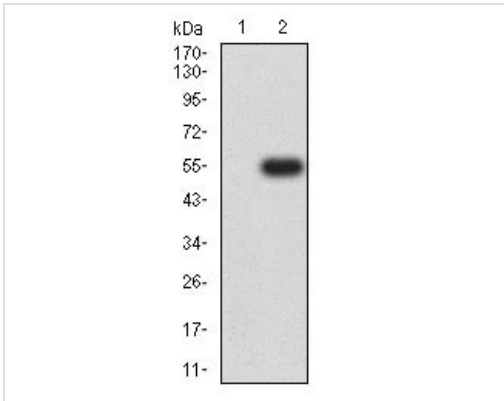
Cellular localization Membrane.

Images



Anti-IL2 Receptor beta/p75 antibody [1G11C6] (ab233792) at 1/500 dilution + Recombinant human IL2 Receptor beta/p75 (aa 27-240) protein

Expected MW is 51kDa.

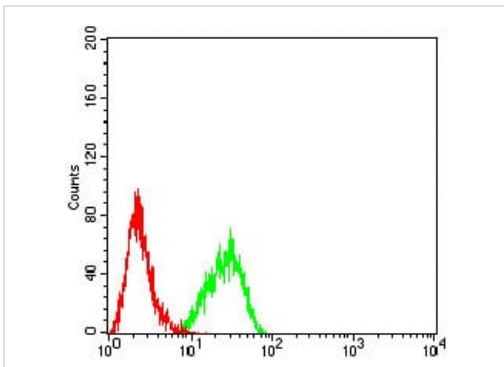


Western blot - Anti-IL2 Receptor beta/p75 antibody [1G11C6] (ab233792)

All lanes : Anti-IL2 Receptor beta/p75 antibody [1G11C6] (ab233792) at 1/500 dilution

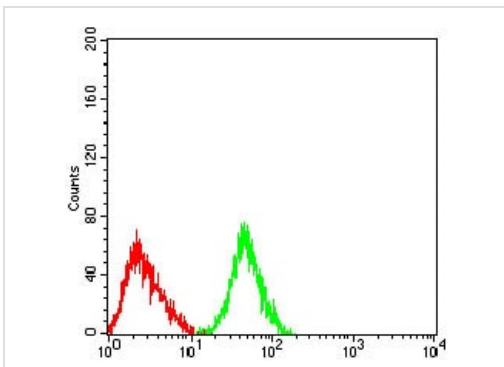
Lane 1 : Untransfected HEK-293 (human epithelial cell line from embryonic kidney) cell lysate

Lane 2 : IL2 Receptor beta/p75 (aa 27-240)-hlgG-Fc-transfected HEK-293 cell lysate



Flow Cytometry - Anti-IL2 Receptor beta/p75 antibody [1G11C6] (ab233792)

Flow cytometric analysis of HL-60 (human promyelocytic leukemia cell line) cells labeling IL2 Receptor beta/p75 with ab233792 at 1/200 dilution (green) compared with a negative control (red).



Flow Cytometry - Anti-IL2 Receptor beta/p75 antibody [1G11C6] (ab233792)

Flow cytometric analysis of Jurkat (human T cell leukemia cell line from peripheral blood) cells labeling IL2 Receptor beta/p75 with ab233792 at 1/200 dilution (green) compared with a negative control (red).

Please note: All products are "FOR RESEARCH USE ONLY. NOT FOR USE IN DIAGNOSTIC PROCEDURES"

Our Promise to you: Quality guaranteed and expert technical support

- Replacement or refund for products not performing as stated on the datasheet
- Valid for 12 months from date of delivery
- Response to your inquiry within 24 hours

- We provide support in Chinese, English, French, German, Japanese and Spanish
- Extensive multi-media technical resources to help you
- We investigate all quality concerns to ensure our products perform to the highest standards

If the product does not perform as described on this datasheet, we will offer a refund or replacement. For full details of the Abpromise, please visit <https://www.abcam.com/abpromise> or contact our technical team.

Terms and conditions

- Guarantee only valid for products bought direct from Abcam or one of our authorized distributors