



Product datasheet

Anti-ILT-3 antibody ab229747

2 Images

Overview

Product name	Anti-ILT-3 antibody
Description	Rabbit polyclonal to ILT-3
Host species	Rabbit
Tested applications	Suitable for: IHC-P, WB
Species reactivity	Reacts with: Human
Immunogen	<p>Recombinant fragment corresponding to Human ILT-3 aa 22-259. Extracellular domain. Sequence:</p> <p>QAGPLPKPTLWAEPGSVISWGNSVTIWCQGTLEAREYRL DKEESPAPWDR QNPLEPKNKARFSPMTEDYAGRYRCYRSPVGWSQPS DPLELVMTGAY SKPTLSALPSPLVTSGKSVTLLCQSRSPMDTFLLIKERAA HPLLHLRSEH GAQQHQAEFPMSPVTSVHGGTYRCFSSHGFSHYLLSHPS DPLELVSGSL EDPRPSPTRSVSTAAGPEDQPLMPTGSPHSGLRRHWE</p> <p>Database link: Q8NHJ6</p> <p style="text-align: right;">  Run BLAST with  Run BLAST with </p>
Positive control	WB: MCF7 and A549 whole cell lysates. IHC-P: Human lung tissue.
General notes	<p>Previously labelled as LILRB4.</p> <p>Reproducibility is key to advancing scientific discovery and accelerating scientists' next breakthrough.</p> <p>Abcam is leading the way with our range of recombinant antibodies, knockout-validated antibodies and knockout cell lines, all of which support improved reproducibility.</p> <p>We are also planning to innovate the way in which we present recommended applications and species on our product datasheets, so that only applications & species that have been tested in our own labs, our suppliers or by selected trusted collaborators are covered by our Abpromise™ guarantee.</p> <p>In preparation for this, we have started to update the applications & species that this product is Abpromise guaranteed for.</p> <p>We are also updating the applications & species that this product has been "predicted to work</p>

with," however this information is not covered by our Abpromise guarantee.

Applications & species from publications and Abreviews that have not been tested in our own labs or in those of our suppliers are not covered by the Abpromise guarantee.

Please check that this product meets your needs before purchasing. If you have any questions, special requirements or concerns, please send us an inquiry and/or contact our Support team ahead of purchase. Recommended alternatives for this product can be found below, as well as customer reviews and Q&As.

Properties

Form	Liquid
Storage instructions	Shipped at 4°C. Store at +4°C short term (1-2 weeks). Upon delivery aliquot. Store at -20°C long term. Avoid freeze / thaw cycle.
Storage buffer	pH: 7.30 Preservative: 0.02% Sodium azide Constituents: PBS, 50% Glycerol (glycerin, glycerine)
Purity	Immunogen affinity purified
Clonality	Polyclonal
Isotype	IgG

Applications

Our [Abpromise guarantee](#) covers the use of **ab229747** in the following tested applications.

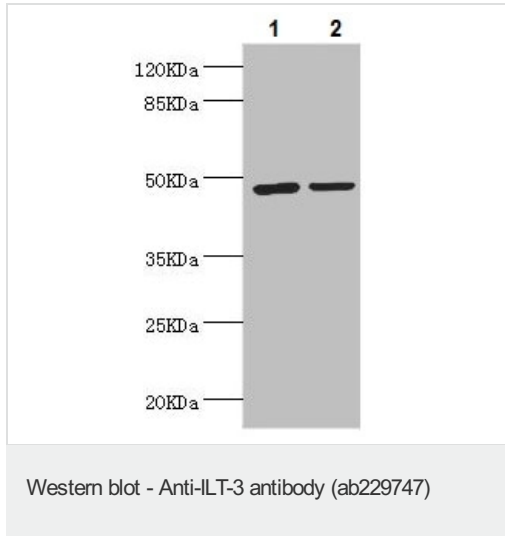
The application notes include recommended starting dilutions; optimal dilutions/concentrations should be determined by the end user.

Application	Abreviews	Notes
IHC-P		1/20 - 1/200.
WB		1/1000 - 1/5000. Detects a band of approximately 49 kDa (predicted molecular weight: 49 kDa).

Target

Function	Receptor for class I MHC antigens. Recognizes a broad spectrum of HLA-A, HLA-B, HLA-C and HLA-G alleles. Involved in the down-regulation of the immune response and the development of tolerance, e.g. towards transplants. Interferes with TNFRSF5-signaling and NF-kappa-B up-regulation. Inhibits receptor-mediated phosphorylation of cellular proteins and mobilization of intracellular calcium ions.
Tissue specificity	Detected in monocytes, macrophages, dendritic cells, lung, natural killer cells and B-cells.
Sequence similarities	Contains 2 Ig-like C2-type (immunoglobulin-like) domains.
Domain	Contains 3 copies of a cytoplasmic motif that is referred to as the immunoreceptor tyrosine-based inhibitor motif (ITIM). This motif is involved in modulation of cellular responses. The phosphorylated ITIM motif can bind the SH2 domain of several SH2-containing phosphatases.
Cellular localization	Cell membrane. Ligand binding leads to internalization and translocation to an antigen-

Images



All lanes : Anti-ILT-3 antibody (ab229747) at 1/1000 dilution

Lane 1 : MCF7 (human breast adenocarcinoma cell line) whole cell lysate

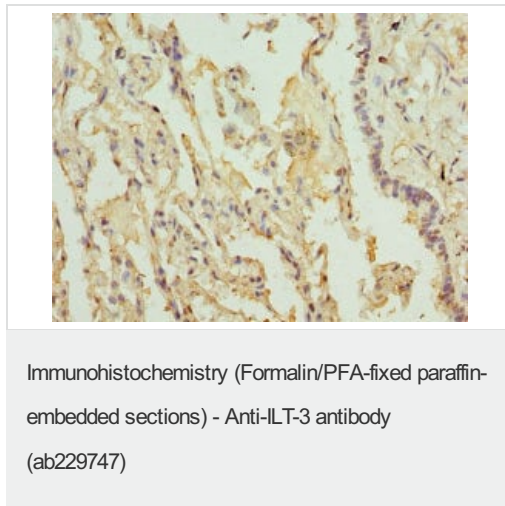
Lane 2 : A549 (human lung carcinoma cell line) whole cell lysate

Secondary

All lanes : Goat polyclonal to rabbit at 1/10000 dilution

Predicted band size: 49 kDa

Observed band size: 49 kDa



Paraffin-embedded human lung tissue stained for ILT-3 using ab229747 at 1/100 dilution in immunohistochemical analysis.

Please note: All products are "FOR RESEARCH USE ONLY. NOT FOR USE IN DIAGNOSTIC PROCEDURES"

Our Abpromise to you: Quality guaranteed and expert technical support

- Replacement or refund for products not performing as stated on the datasheet
- Valid for 12 months from date of delivery
- Response to your inquiry within 24 hours
- We provide support in Chinese, English, French, German, Japanese and Spanish
- Extensive multi-media technical resources to help you
- We investigate all quality concerns to ensure our products perform to the highest standards

If the product does not perform as described on this datasheet, we will offer a refund or replacement. For full details of the Abpromise, please visit <https://www.abcam.com/abpromise> or contact our technical team.

Terms and conditions

- Guarantee only valid for products bought direct from Abcam or one of our authorized distributors