

## Product datasheet

# Anti-Importin4/Imp4 antibody [EPR13660-27] ab181037

Recombinant **RabMAb**

[1 References](#) [6 Images](#)

### Overview

<b>Product name</b>	Anti-Importin4/Imp4 antibody [EPR13660-27]
<b>Description</b>	Rabbit monoclonal [EPR13660-27] to Importin4/Imp4
<b>Host species</b>	Rabbit
<b>Tested applications</b>	<b>Suitable for:</b> WB, IHC-P, ICC/IF, Flow Cyt, IP
<b>Species reactivity</b>	<b>Reacts with:</b> Mouse, Rat, Human
<b>Immunogen</b>	Recombinant fragment within Human Importin4/Imp4. The exact sequence is proprietary. Database link: <a href="#">Q8TEX9</a>
<b>Positive control</b>	HepG2, HeLa, A549, human seminoma and PC-12 lysates. Human colon and testis tissue. A549 cells. Permeabilized A549 cells. Immunoprecipitation pellet from HepG2 whole cell lysate ( <a href="#">ab7900</a> ).
<b>General notes</b>	This product was previously labelled as Importin4

Our RabMAb<sup>®</sup> technology is a patented hybridoma-based technology for making rabbit monoclonal antibodies. For details on our patents, please refer to [RabMAb<sup>®</sup> patents](#).

This product is a [recombinant rabbit monoclonal antibody](#).

### Properties

<b>Form</b>	Liquid
<b>Storage instructions</b>	Shipped at 4°C. Store at +4°C short term (1-2 weeks). Upon delivery aliquot. Store at -20°C long term. Avoid freeze / thaw cycle.
<b>Storage buffer</b>	pH: 7.20 Preservative: 0.01% Sodium azide Constituents: 9% PBS, 40% Glycerol, 0.05% BSA, 50% Tissue culture supernatant
<b>Purity</b>	Tissue culture supernatant
<b>Clonality</b>	Monoclonal
<b>Clone number</b>	EPR13660-27
<b>Isotype</b>	IgG

## Applications

---

Our [Abpromise guarantee](#) covers the use of **ab181037** in the following tested applications.

The application notes include recommended starting dilutions; optimal dilutions/concentrations should be determined by the end user.

Application	Abreviews	Notes
WB		1/10000 - 1/50000. Predicted molecular weight: 119 kDa.
IHC-P		1/50 - 1/100. Perform heat mediated antigen retrieval with citrate buffer pH 6 before commencing with IHC staining protocol.
ICC/IF		1/50 - 1/100.
Flow Cyt		1/10 - 1/100. <a href="#">ab172730</a> - Rabbit monoclonal IgG, is suitable for use as an isotype control with this antibody.
IP		1/10 - 1/100.

## Target

---

### Function

Functions in nuclear protein import as nuclear transport receptor. Serves as receptor for nuclear localization signals (NLS) in cargo substrates. Is thought to mediate docking of the importin/substrate complex to the nuclear pore complex (NPC) through binding to nucleoporin and the complex is subsequently translocated through the pore by an energy requiring, Ran-dependent mechanism. At the nucleoplasmic side of the NPC, Ran binds to the importin, the importin/substrate complex dissociates and importin is re-exported from the nucleus to the cytoplasm where GTP hydrolysis releases Ran. The directionality of nuclear import is thought to be conferred by an asymmetric distribution of the GTP- and GDP-bound forms of Ran between the cytoplasm and nucleus (By similarity). Mediates the nuclear import of RPS3A. In vitro, mediates the nuclear import of human cytomegalovirus UL84 by recognizing a non-classical NLS.

### Sequence similarities

Belongs to the importin beta family.  
Contains 6 HEAT repeats.  
Contains 1 importin N-terminal domain.

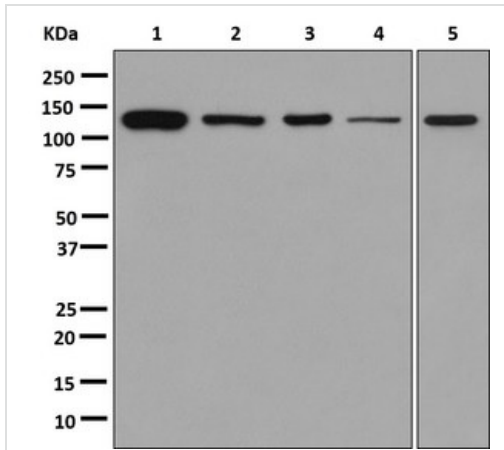
### Cellular localization

Cytoplasm. Nucleus.

---

## Images

---



Western blot - Anti-Importin4/Imp4 antibody  
[EPR13660-27] (ab181037)

**All lanes :** Anti-Importin4/Imp4 antibody [EPR13660-27]  
(ab181037) at 1/10000 dilution

**Lane 1 :** HepG2 lysates

**Lane 2 :** HeLa lysates

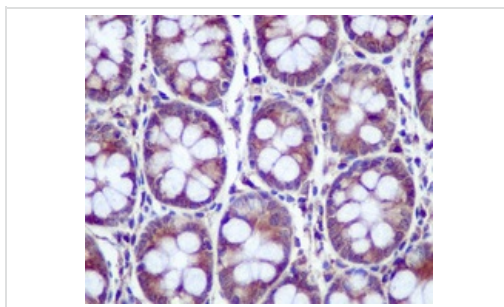
**Lane 3 :** A549 lysates

**Lane 4 :** Human seminoma lysates

**Lane 5 :** PC-12 lysates

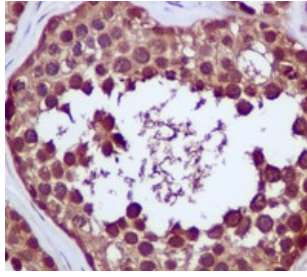
Lysates/proteins at 10 µg per lane.

**Predicted band size:** 119 kDa



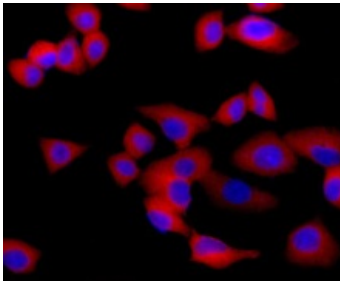
Immunohistochemistry (Formalin/PFA-fixed paraffin-  
embedded sections) - Anti-Importin4/Imp4 antibody  
[EPR13660-27] (ab181037)

Immunohistochemical analysis of paraffin-embedded human colon  
tissue staining Importin4/Imp4 using ab181037 at a 1/100 dilution.



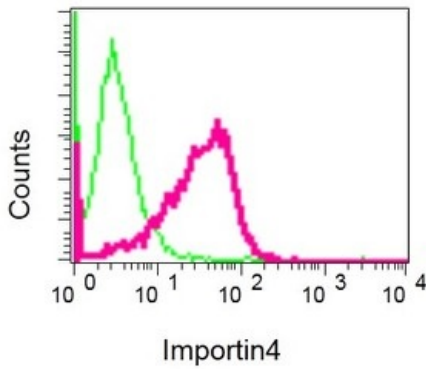
Immunohistochemistry (Formalin/PFA-fixed paraffin-embedded sections) - Anti-Importin4/Imp4 antibody [EPR13660-27] (ab181037)

Immunohistochemical analysis of paraffin-embedded human testis tissue staining Importin4/Imp4 using ab181037 at a 1/100 dilution.



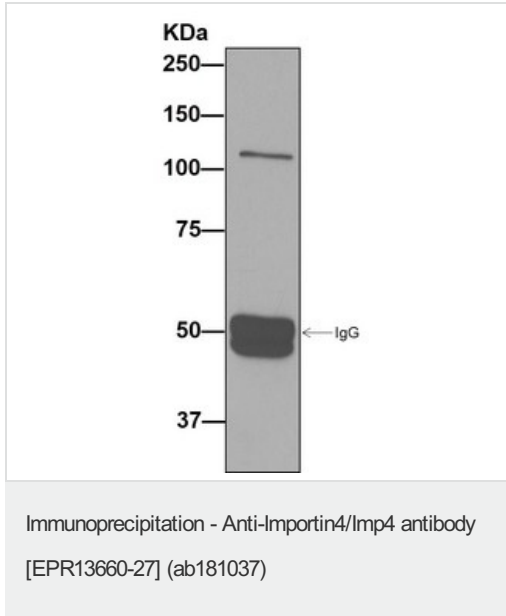
Immunocytochemistry/ Immunofluorescence - Anti-Importin4/Imp4 antibody [EPR13660-27] (ab181037)

Immunofluorescent staining Importin4/Imp4 in A549 cells using ab181037 at a 1/100 dilution (red). DAPI nuclear staining (blue).



Flow Cytometry - Anti-Importin4/Imp4 antibody [EPR13660-27] (ab181037)

Flow cytometric analysis of permeabilized A549 cells using ab181037 at a 1/10 dilution (red) or a rabbit IgG (negative) (green).



Western blot analysis on immunoprecipitation pellet from HepG2 cell lysate using ab181037 at a 1/10 dilution for IP.

**Please note:** All products are "FOR RESEARCH USE ONLY. NOT FOR USE IN DIAGNOSTIC PROCEDURES"

### Our Abpromise to you: Quality guaranteed and expert technical support

- Replacement or refund for products not performing as stated on the datasheet
- Valid for 12 months from date of delivery
- Response to your inquiry within 24 hours
- We provide support in Chinese, English, French, German, Japanese and Spanish
- Extensive multi-media technical resources to help you
- We investigate all quality concerns to ensure our products perform to the highest standards

If the product does not perform as described on this datasheet, we will offer a refund or replacement. For full details of the Abpromise, please visit <https://www.abcam.com/abpromise> or contact our technical team.

### Terms and conditions

- Guarantee only valid for products bought direct from Abcam or one of our authorized distributors