

Product datasheet

Anti-INCENP antibody [58-217] ab23956

★★★★★ 3 Abreviews 4 References 4 Images

Overview

Product name	Anti-INCENP antibody [58-217]
Description	Mouse monoclonal [58-217] to INCENP
Host species	Mouse
Tested applications	Suitable for: ICC/IF, IHC-P
Species reactivity	Reacts with: Human Does not react with: Mouse, Rat
Immunogen	Fusion protein corresponding to Human INCENP aa 200-300.
General notes	This antibody clone is manufactured by Abcam. If you require this antibody in a particular buffer formulation or a particular conjugate for your experiments, please contact orders@abcam.com or you can find further information here .

Properties

Form	Liquid
Storage instructions	Shipped at 4°C. Store at +4°C short term (1-2 weeks). Upon delivery aliquot. Store at -20°C or -80°C. Avoid freeze / thaw cycle.
Storage buffer	pH: 7.40 Preservative: 0.02% Sodium azide Constituent: PBS
Purity	IgG fraction
Clonality	Monoclonal
Clone number	58-217
Isotype	IgG1

Applications

Our [Abpromise guarantee](#) covers the use of **ab23956** in the following tested applications.

The application notes include recommended starting dilutions; optimal dilutions/concentrations should be determined by the end user.

Application	Abreviews	Notes
ICC/IF	★★★★★	Use a concentration of 1 µg/ml.
IHC-P	★★★★★	1/200. Perform heat mediated antigen retrieval with citrate buffer pH 6 before commencing with IHC staining protocol.

Target

Function

Component of the chromosomal passenger complex (CPC), a complex that acts as a key regulator of mitosis. The CPC complex has essential functions at the centromere in ensuring correct chromosome alignment and segregation and is required for chromatin-induced microtubule stabilization and spindle assembly. Probably acts through association with AURKB or AURKC. Seems to bind directly to microtubules. Controls the kinetochore localization of BUB1.

Sequence similarities

Belongs to the INCENP family.

Cellular localization

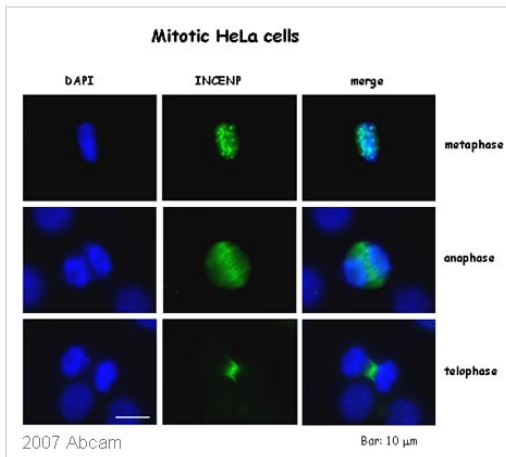
Chromosome > centromere. Cytoplasm > cytoskeleton > spindle. Nucleus. Chromosome > centromere > kinetochore. Localizes to inner kinetochore. Localizes on chromosome arms and inner centromeres from prophase through metaphase and then transferring to the spindle midzone and midbody from anaphase through cytokinesis. Colocalizes with AURKB at mitotic chromosomes.

Images



Immunocytochemistry/ Immunofluorescence - Anti-INCENP antibody [58-217] (ab23956)

ICC/IF image of ab23956 stained human HeLa cells. The cells were methanol fixed (5 min) and incubated with the antibody (ab23956, 1 µg/ml) for 1h at room temperature. The secondary antibody (green) was Alexa Fluor® 488 goat anti-mouse IgG (H+L) used at a 1/1000 dilution for 1h. Image-iT™ FX Signal Enhancer was used as the primary blocking agent, 5% BSA (in TBS-T) was used for all other blocking steps. DAPI was used to stain the cell nuclei (blue). Alexa Fluor® 594 WGA was used to label plasma membranes (red).

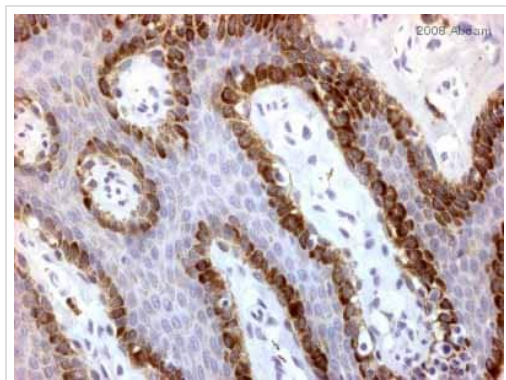


Immunocytochemistry/ Immunofluorescence - Anti-INCENP antibody [58-217] (ab23956)

Image kindly submitted by Serena Orlando, Giulia Guarguaglini and Patrizia Lavia, from the University 'La Sapienza' CNR, Italy

ab23956 staining INCENP in HeLa cells, by immunofluorescence.

optimal antibody dilution: 1mg/ml

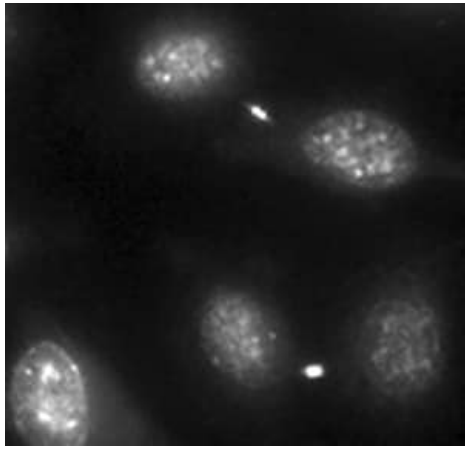


Immunohistochemistry (Formalin/PFA-fixed paraffin-embedded sections) - Anti-INCENP antibody [58-217] (ab23956)

This image is courtesy of an Abreview submitted by Antibody Solutions Ltd.

ab23956 staining human anal cancer tissue sections by IHC-P.

Sections were formaldehyde fixed and subjected to heat mediated antigen retrieval in citrate buffer (pH 6) prior to blocking in a commercially available blocking agent for 20 minutes at 20°C. The primary antibody was diluted 1/200 and incubated with the sample for 40 minutes at 20°C. A HRP-conjugated goat anti-mouse antibody was used as the secondary.



ab23956 staining INCENP in siRNA-treated HeLa cells by Immunocytochemistry/ Immunofluorescence.

Immunocytochemistry/ Immunofluorescence - Anti-INCENP antibody [58-217] (ab23956)

Image from Mackay DR et al, J Cell Biol. 2010 Nov 29;191(5):923-31. Epub 2010 Nov 22, Fig 3. DOI 10.1083/jcb.201007124

Please note: All products are "FOR RESEARCH USE ONLY. NOT FOR USE IN DIAGNOSTIC PROCEDURES"

Our Abpromise to you: Quality guaranteed and expert technical support

- Replacement or refund for products not performing as stated on the datasheet
- Valid for 12 months from date of delivery
- Response to your inquiry within 24 hours
- We provide support in Chinese, English, French, German, Japanese and Spanish
- Extensive multi-media technical resources to help you
- We investigate all quality concerns to ensure our products perform to the highest standards

If the product does not perform as described on this datasheet, we will offer a refund or replacement. For full details of the Abpromise, please visit <https://www.abcam.com/abpromise> or contact our technical team.

Terms and conditions

- Guarantee only valid for products bought direct from Abcam or one of our authorized distributors