

Product datasheet

anti-Infliximab ELISA Kit ab237656

[1 Image](#)

Overview

Product name anti-Infliximab ELISA Kit

Detection method Colorimetric

Precision

Intra-assay

Sample	n	Mean	SD	CV%
Overall				< 15%

Inter-assay

Sample	n	Mean	SD	CV%
Overall				< 15%

Sample type Serum, Plasma

Assay type Quantitative

Sensitivity 15 ng/ml

Range 62 ng/ml - 500 ng/ml

Recovery

Sample specific recovery

Sample type	Average %	Range
Serum		85% - 115%

Assay duration Multiple steps standard assay

Species reactivity **Reacts with:** Human

Product overview anti-Infliximab ELISA Kit (ab237656) is designed to quantify/measure the antibody against Infliximab with high specificity and sensitivity in biological matrices.

Platform Microplate

Properties

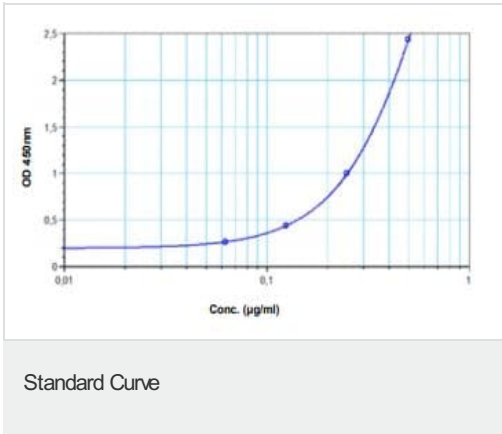
Storage instructions Store at +4°C. Please refer to protocols.

Components	96 tests
Assay Buffer	1 x 50ml
Confirmation Reagent	1 x 12ml
Infliximab Standard S1	1 x 1ml
Infliximab Standard S2	1 x 1ml
Infliximab Standard S3	1 x 1ml
Infliximab Standard S4	1 x 1ml
Infliximab Standard S5	1 x 1ml
Infliximab Standard S6	1 x 1ml
Infliximab Standard S7	1 x 1ml
Micro ELISA Plate	1 unit
Peroxidase Conjugate	1 x 12ml
Plate Sealers	2 units
Stop Solution	1 x 12ml
TMB substrate	1 x 12ml
Wash buffer (20X)	1 x 50ml

Relevance

Infliximab is a chimeric monoclonal antibody and used to treat auto-immune disorders. Infliximab reduces the amount of active human tumour necrosis factor alpha (hTNF α) in the body by binding to it and preventing it from signaling the receptors for TNF α on the surface of various cell types. TNF α is one of the key cytokines that triggers and sustains the inflammatory reactions. Infliximab is used for the treatment of psoriasis, Crohn's disease, ankylosing spondylitis, psoriatic arthritis, rheumatoid arthritis, ulcerative colitis.

Images



Typical Standard Curve: This standard curve is for demonstration only. A standard curve must be run with each assay.

Please note: All products are "FOR RESEARCH USE ONLY. NOT FOR USE IN DIAGNOSTIC PROCEDURES"

Our Abpromise to you: Quality guaranteed and expert technical support

- Replacement or refund for products not performing as stated on the datasheet
- Valid for 12 months from date of delivery
- Response to your inquiry within 24 hours
- We provide support in Chinese, English, French, German, Japanese and Spanish
- Extensive multi-media technical resources to help you
- We investigate all quality concerns to ensure our products perform to the highest standards

If the product does not perform as described on this datasheet, we will offer a refund or replacement. For full details of the Abpromise, please visit <https://www.abcam.com/abpromise> or contact our technical team.

Terms and conditions

- Guarantee only valid for products bought direct from Abcam or one of our authorized distributors