

Product datasheet

Anti-Inhibin beta B antibody [EPR2788(2)] ab128944

Recombinant **RabMAb**

[3 Images](#)

Overview

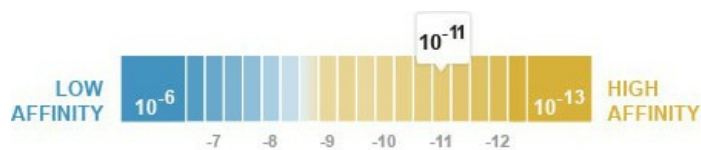
Product name	Anti-Inhibin beta B antibody [EPR2788(2)]
Description	Rabbit monoclonal [EPR2788(2)] to Inhibin beta B
Host species	Rabbit
Tested applications	Suitable for: WB Unsuitable for: IHC-P or IP
Species reactivity	Reacts with: Mouse, Rat, Human
Immunogen	Synthetic peptide corresponding to Human Inhibin beta B aa 350 to the C-terminus. Database link: P09529 (Peptide available as ab174743)
Positive control	Mouse brain and Rat brain lysates; Human Inhibin beta B recombinant protein (mature form: 17 kDa)
General notes	

Our RabMAb[®] technology is a patented hybridoma-based technology for making rabbit monoclonal antibodies. For details on our patents, please refer to [RabMab[®] patents](#).

This product is a [recombinant rabbit monoclonal antibody](#).

Properties

Form	Liquid
Storage instructions	Shipped at 4°C. Store at -20°C. Stable for 12 months at -20°C.
Dissociation constant (K_D)	K _D = 2.78 x 10 ⁻¹¹ M



[Learn more about K_D](#)

Storage buffer	pH: 7.20 Preservative: 0.01% Sodium azide
-----------------------	--

Constituents: 9% PBS, 40% Glycerol, 0.05% BSA, 50% Tissue culture supernatant

Purity	Tissue culture supernatant
Clonality	Monoclonal
Clone number	EPR2788(2)
Isotype	IgG

Applications

Our [Abpromise guarantee](#) covers the use of **ab128944** in the following tested applications.

The application notes include recommended starting dilutions; optimal dilutions/concentrations should be determined by the end user.

Application	Abreviews	Notes
WB		1/1000 - 1/10000. Detects a band of approximately 52, 17 kDa (predicted molecular weight: 45 kDa).

Application notes Is unsuitable for IHC-P or IP.

Target

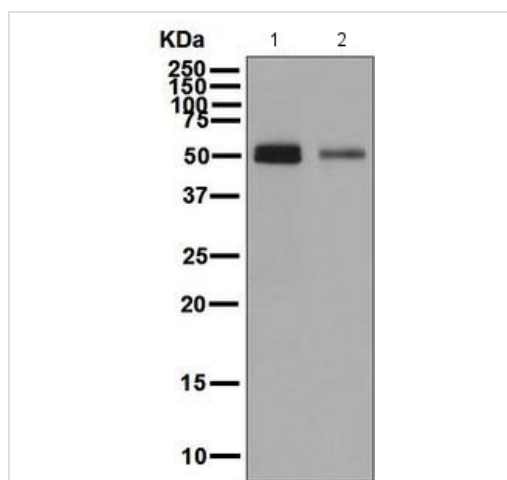
Function

Inhibins and activins inhibit and activate, respectively, the secretion of follitropin by the pituitary gland. Inhibins/activins are involved in regulating a number of diverse functions such as hypothalamic and pituitary hormone secretion, gonadal hormone secretion, germ cell development and maturation, erythroid differentiation, insulin secretion, nerve cell survival, embryonic axial development or bone growth, depending on their subunit composition. Inhibins appear to oppose the functions of activins.

Sequence similarities Belongs to the TGF-beta family.

Cellular localization Secreted.

Images



Western blot - Anti-Inhibin beta B antibody
[EPR2788(2)] (ab128944)

All lanes : Anti-Inhibin beta B antibody [EPR2788(2)] (ab128944)
at 1/1000 dilution

Lane 1 : Mouse brain lysate

Lane 2 : Rat brain lysate

Lysates/proteins at 10 µg per lane.

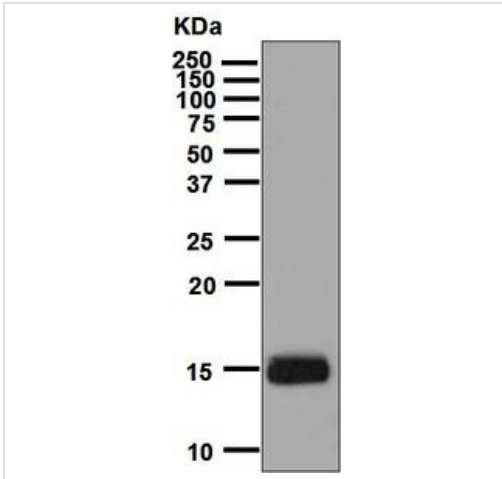
Secondary

All lanes : HRP labelled goat anti-rabbit at 1/2000 dilution

Predicted band size: 45 kDa

Observed band size: 52 kDa

[why is the actual band size different from the predicted?](#)



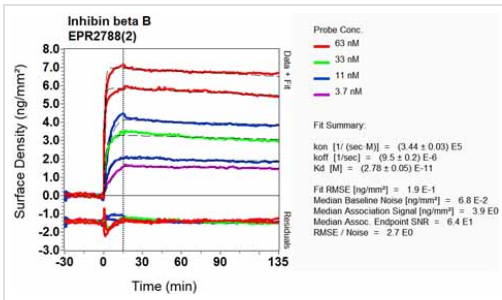
Western blot - Anti-Inhibin beta B antibody
[EPR2788(2)] (ab128944)

Anti-Inhibin beta B antibody [EPR2788(2)] (ab128944) at 1/1000 dilution + Human Inhibin beta B recombinant protein (mature form: 17 kDa) (10 ng)

Secondary

HRP labelled goat anti-rabbit at 1/2000 dilution

Predicted band size: 45 kDa



Other - Anti-Inhibin beta B antibody [EPR2788(2)]
(ab128944)

Equilibrium disassociation constant (K_D)

Learn more about K_D

[Click here to learn more about \$K_D\$](#)

Please note: All products are "FOR RESEARCH USE ONLY. NOT FOR USE IN DIAGNOSTIC PROCEDURES"

Our Abpromise to you: Quality guaranteed and expert technical support

- Replacement or refund for products not performing as stated on the datasheet
- Valid for 12 months from date of delivery
- Response to your inquiry within 24 hours
- We provide support in Chinese, English, French, German, Japanese and Spanish
- Extensive multi-media technical resources to help you
- We investigate all quality concerns to ensure our products perform to the highest standards

If the product does not perform as described on this datasheet, we will offer a refund or replacement. For full details of the Abpromise, please visit <https://www.abcam.com/abpromise> or contact our technical team.

Terms and conditions

- Guarantee only valid for products bought direct from Abcam or one of our authorized distributors