

Product datasheet

Anti-Inhibin beta B antibody [EPR2788(2)] - BSA and Azide free ab226845

Recombinant RabMAb

2 Images

Overview

| | |
|----------------------------|---|
| Product name | Anti-Inhibin beta B antibody [EPR2788(2)] - BSA and Azide free |
| Description | Rabbit monoclonal [EPR2788(2)] to Inhibin beta B - BSA and Azide free |
| Host species | Rabbit |
| Tested applications | Suitable for: WB |
| Species reactivity | Reacts with: Mouse, Rat, Human |
| Immunogen | Synthetic peptide within Human Inhibin beta B aa 350 to the C-terminus. The exact sequence is proprietary. Database link: P09529 (Peptide available as ab174743) |
| Positive control | WB: Human Inhibin beta B recombinant protein (mature form: 17 kDa) |
| General notes | Ab226845 is the carrier-free version of ab128944 . This format is designed for use in antibody labeling, including fluorochromes, metal isotopes, oligonucleotides, enzymes. |

Our [carrier-free formats](#) are supplied in a buffer free of BSA, sodium azide and glycerol for higher conjugation efficiency.

Use our [conjugation kits](#) for antibody conjugates that are ready-to-use in as little as 20 minutes with <1 minute hands-on-time and 100% antibody recovery: available for fluorescent dyes, HRP, biotin and gold.

ab226845 is compatible with the Maxpar® Antibody Labeling Kit from Fluidigm.

Maxpar® is a trademark of Fluidigm Canada Inc.

Our RabMAb® technology is a patented hybridoma-based technology for making rabbit monoclonal antibodies. For details on our patents, please refer to [RabMAb® patents](#).

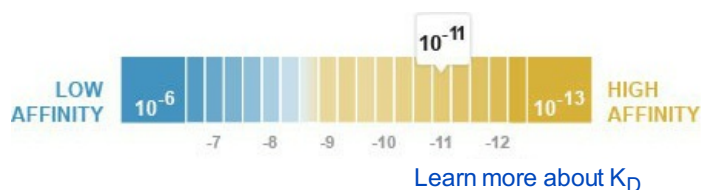
This product is a [recombinant rabbit monoclonal antibody](#).

Properties

Form Liquid

Storage instructions Shipped at 4°C. Store at +4°C short term (1-2 weeks). Upon delivery aliquot. Store at -20°C long term. Avoid freeze / thaw cycle.

Dissociation constant (K_D) K_D = 2.78 x 10⁻¹¹ M



Storage buffer Constituent: PBS

Purity Affinity purified

Clonality Monoclonal

Clone number EPR2788(2)

Isotype IgG

Applications

Our [Abpromise guarantee](#) covers the use of **ab226845** in the following tested applications.

The application notes include recommended starting dilutions; optimal dilutions/concentrations should be determined by the end user.

| Application | Abreviews | Notes |
|-------------|-----------|---|
| WB | | Use at an assay dependent concentration. Detects a band of approximately 52, 17 kDa (predicted molecular weight: 45 kDa). |

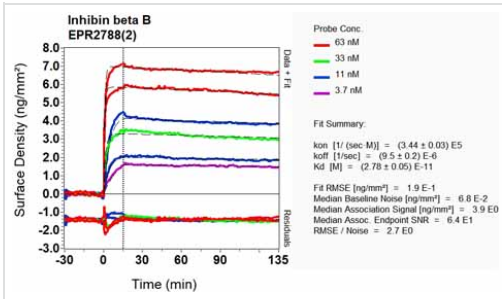
Target

Function Inhibins and activins inhibit and activate, respectively, the secretion of follitropin by the pituitary gland. Inhibins/activins are involved in regulating a number of diverse functions such as hypothalamic and pituitary hormone secretion, gonadal hormone secretion, germ cell development and maturation, erythroid differentiation, insulin secretion, nerve cell survival, embryonic axial development or bone growth, depending on their subunit composition. Inhibins appear to oppose the functions of activins.

Sequence similarities Belongs to the TGF-beta family.

Cellular localization Secreted.

Images



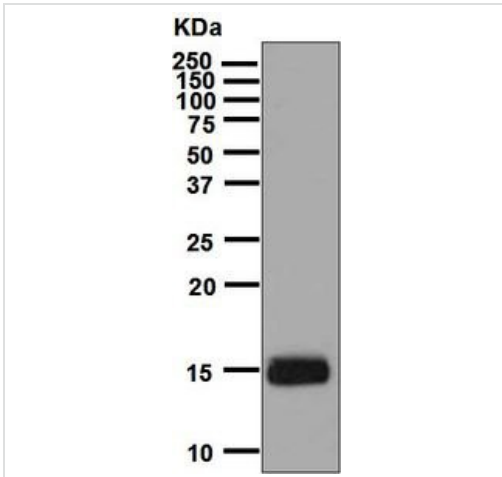
Other - Anti-Inhibin beta B antibody [EPR2788(2)] - BSA and Azide free (ab226845)

Equilibrium dissociation constant (K_D)

Learn more about K_D

[Click here to learn more about \$K_D\$](#)

This data was developed using the same antibody clone in a different buffer formulation containing PBS, BSA, glycerol, and sodium azide ([ab128944](#)).



Western blot - Anti-Inhibin beta B antibody [EPR2788(2)] - BSA and Azide free (ab226845)

Anti-Inhibin beta B antibody [EPR2788(2)] ([ab128944](#)) at 1/1000 dilution + Human Inhibin beta B recombinant protein (mature form: 17 kDa) (10 ng)

Secondary

Secondary: HRP labelled goat anti-rabbit at 1/2000 dilution

Predicted band size: 45 kDa

This data was developed using the same antibody clone in a different buffer formulation containing PBS, BSA, glycerol, and sodium azide ([ab128944](#)).

Please note: All products are "FOR RESEARCH USE ONLY. NOT FOR USE IN DIAGNOSTIC PROCEDURES"

Our Abpromise to you: Quality guaranteed and expert technical support

- Replacement or refund for products not performing as stated on the datasheet
- Valid for 12 months from date of delivery
- Response to your inquiry within 24 hours
- We provide support in Chinese, English, French, German, Japanese and Spanish
- Extensive multi-media technical resources to help you
- We investigate all quality concerns to ensure our products perform to the highest standards

If the product does not perform as described on this datasheet, we will offer a refund or replacement. For full details of the Abpromise, please visit <https://www.abcam.com/abpromise> or contact our technical team.

Terms and conditions

- Guarantee only valid for products bought direct from Abcam or one of our authorized distributors