

Product datasheet

Anti-Integrin alpha 4/CD49D antibody ab226362

1 Image

Overview

Product name	Anti-Integrin alpha 4/CD49D antibody
Description	Rabbit polyclonal to Integrin alpha 4/CD49D
Host species	Rabbit
Tested applications	Suitable for: WB
Species reactivity	Reacts with: Human
Immunogen	Synthetic peptide within Human Integrin alpha 4/CD49D aa 982-1032. The exact sequence is proprietary. Database link: P13612
Positive control	WB: Jurkat whole cell lysate.
General notes	This product was previously labelled as Integrin alpha 4

Reproducibility is key to advancing scientific discovery and accelerating scientists' next breakthrough.

Abcam is leading the way with our range of recombinant antibodies, knockout-validated antibodies and knockout cell lines, all of which support improved reproducibility.

We are also planning to innovate the way in which we present recommended applications and species on our product datasheets, so that only applications & species that have been tested in our own labs, our suppliers or by selected trusted collaborators are covered by our Abpromise™ guarantee.

In preparation for this, we have started to update the applications & species that this product is Abpromise guaranteed for.

We are also updating the applications & species that this product has been “predicted to work with,” however this information is not covered by our Abpromise guarantee.

Applications & species from publications and Abreviews that have not been tested in our own labs or in those of our suppliers are not covered by the Abpromise guarantee.

Please check that this product meets your needs before purchasing. If you have any questions, special requirements or concerns, please send us an inquiry and/or contact our Support team ahead of purchase. Recommended alternatives for this product can be found below, as well as customer reviews and Q&As.

Properties

Form	Liquid
Storage instructions	Shipped at 4°C. Store at +4°C short term (1-2 weeks). Upon delivery aliquot. Store at -20°C long term. Avoid freeze / thaw cycle.
Storage buffer	pH: 7 Preservative: 0.09% Sodium azide Constituent: Tris citrate/phosphate
	pH 7 to 8
Purity	Immunogen affinity purified
Purification notes	ab226362 was affinity purified using an epitope specific to Integrin alpha 4/CD49D immobilized on solid support.
Clonality	Polyclonal
Isotype	IgG

Applications

Our [Abpromise guarantee](#) covers the use of **ab226362** in the following tested applications.

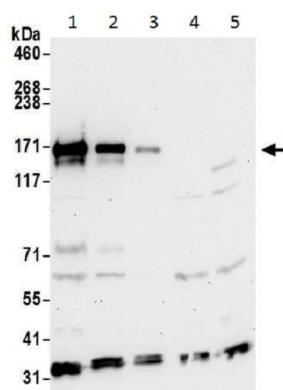
The application notes include recommended starting dilutions; optimal dilutions/concentrations should be determined by the end user.

Application	Abreviews	Notes
WB		1/2000 - 1/10000. Predicted molecular weight: 115 kDa.

Target

Function	Integrins alpha-4/beta-1 (VLA-4) and alpha-4/beta-7 are receptors for fibronectin. They recognize one or more domains within the alternatively spliced CS-1 and CS-5 regions of fibronectin. They are also receptors for VCAM1. Integrin alpha-4/beta-1 recognizes the sequence Q-I-D-S in VCAM1. Integrin alpha-4/beta-7 is also a receptor for MADCAM1. It recognizes the sequence L-D-T in MADCAM1. On activated endothelial cells integrin VLA-4 triggers homotypic aggregation for most VLA-4-positive leukocyte cell lines. It may also participate in cytolytic T-cell interactions with target cells.
Sequence similarities	Belongs to the integrin alpha chain family. Contains 7 FG-GAP repeats.
Domain	The SG1 motif is involved in binding to chondroitin sulfate glycosaminoglycan and cell adhesion.
Post-translational modifications	Phosphorylation on Ser-1027 inhibits PXN binding.
Cellular localization	Membrane.

Images



Western blot - Anti-Integrin alpha 4/CD49D antibody (ab226362)

All lanes : Anti-Integrin alpha 4/CD49D antibody (ab226362) at 0.1 µg/ml

Lane 1 : Jurkat (Human T cell leukemia cell line from peripheral blood) whole cell lysate at 50 µg

Lane 2 : Jurkat (Human T cell leukemia cell line from peripheral blood) whole cell lysate at 15 µg

Lane 3 : Jurkat (Human T cell leukemia cell line from peripheral blood) whole cell lysate at 5 µg

Lane 4 : HeLa (human epithelial cell line from cervix adenocarcinoma) whole cell lysate at 50 µg

Lane 5 : HEK-293T (human epithelial cell line from embryonic kidney transformed with large T antigen) whole cell lysate at 50 µg

Developed using the ECL technique.

Predicted band size: 115 kDa

Exposure time: 30 seconds

Cell lysates were prepared using NETN lysis buffer.

Please note: All products are "FOR RESEARCH USE ONLY. NOT FOR USE IN DIAGNOSTIC PROCEDURES"

Our Abpromise to you: Quality guaranteed and expert technical support

- Replacement or refund for products not performing as stated on the datasheet
- Valid for 12 months from date of delivery
- Response to your inquiry within 24 hours
- We provide support in Chinese, English, French, German, Japanese and Spanish
- Extensive multi-media technical resources to help you
- We investigate all quality concerns to ensure our products perform to the highest standards

If the product does not perform as described on this datasheet, we will offer a refund or replacement. For full details of the Abpromise, please visit <https://www.abcam.com/abpromise> or contact our technical team.

Terms and conditions

- Guarantee only valid for products bought direct from Abcam or one of our authorized distributors