

Product datasheet

Anti-Integrin alpha 6 antibody [450-30A] (FITC)  
ab30496

1 References 1 Image

Overview

<b>Product name</b>	Anti-Integrin alpha 6 antibody [450-30A] (FITC)
<b>Description</b>	Mouse monoclonal [450-30A] to Integrin alpha 6 (FITC)
<b>Host species</b>	Mouse
<b>Conjugation</b>	FITC. Ex: 493nm, Em: 528nm
<b>Tested applications</b>	<b>Suitable for:</b> Flow Cyt
<b>Species reactivity</b>	<b>Reacts with:</b> Human
<b>Immunogen</b>	Full length native protein (Human): alpha 6 beta 4 integrin purified from A431 cells
<b>Positive control</b>	human peripheral blood lymphocytes

Properties

<b>Form</b>	Liquid
<b>Storage instructions</b>	Shipped at 4°C. Store at +4°C.
<b>Storage buffer</b>	pH: 7.40 Preservative: 0.09% Sodium azide Constituents: PBS, 1% BSA
<b>Purity</b>	Protein G purified
<b>Clonality</b>	Monoclonal
<b>Clone number</b>	450-30A
<b>Myeloma</b>	Sp2/0
<b>Isotype</b>	IgG1

Applications

Our [Abpromise guarantee](#) covers the use of **ab30496** in the following tested applications.

The application notes include recommended starting dilutions; optimal dilutions/concentrations should be determined by the end user.

Application	Abreviews	Notes
-------------	-----------	-------

Flow Cyt

Use 10µl for 10<sup>6</sup> cells.

[ab91356](#) - Mouse monoclonal IgG1, is suitable for use as an isotype control with this antibody.

## Target

### Function

Integrin alpha-6/beta-1 is a receptor for laminin on platelets. Integrin alpha-6/beta-4 is a receptor for laminin in epithelial cells and it plays a critical structural role in the hemidesmosome (By similarity). ITGA6:ITGB4 binds to NRG1 (via EGF domain) and this binding is essential for NRG1-ERBB signaling (PubMed:20682778). ITGA6:ITGB4 binds to IGF1 and this binding is essential for IGF1 signaling (PubMed:22351760).

### Tissue specificity

Integrin alpha-6/beta-4 is predominantly expressed by epithelia. Isoforms containing segment X1 are ubiquitously expressed. Isoforms containing segment X1X2 are expressed in heart, kidney, placenta, colon, duodenum, myoblasts and myotubes, and in a limited number of cell lines; they are always coexpressed with the ubiquitous isoform containing segment X1. In some tissues (e.g. Salivary gland), isoforms containing cytoplasmic segment A and isoforms containing segment B are detected while in others, only isoforms containing one cytoplasmic segment are found (segment A in epidermis and segment B in kidney).

### Involvement in disease

Epidermolysis bullosa letalis, with pyloric atresia

### Sequence similarities

Belongs to the integrin alpha chain family.

Contains 7 FG-GAP repeats.

### Post-translational modifications

Isoforms containing segment A, but not segment B, are the major targets for PMA-induced phosphorylation. Phosphorylation occurs on 'Ser-1103' of isoform alpha-6X1X2A.

Phosphorylation is not required for the induction of integrin alpha-6A/beta-1 high affinity but may reduce the affinity for ligand.

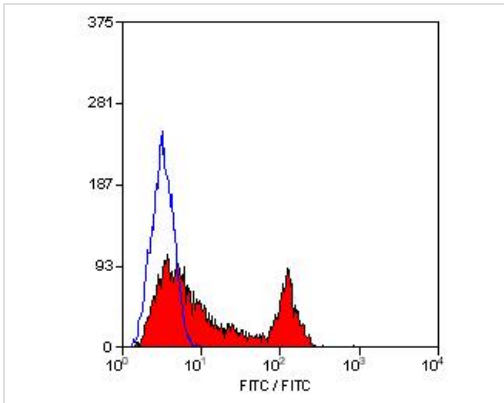
In invasive prostate cancer ITGA6 undergoes PLAU-mediated cleavage at residues Arg-634-635-Arg in a time-dependent manner enhancing cell invasion and migration in vitro.

Palmitoylation by DHHC3 enhances stability and cell surface expression.

### Cellular localization

Cell membrane. Cell membrane.

## Images



Flow cytometric analysis of peripheral blood lymphocytes with 10 $\mu$ l for 10<sup>6</sup> cells of anti human Integrin alpha 6 FITC conjugated (ab30496).

Flow Cytometry - Anti-Integrin alpha 6 antibody [450-30A] (FITC) (ab30496)

**Please note:** All products are "FOR RESEARCH USE ONLY. NOT FOR USE IN DIAGNOSTIC PROCEDURES"

### Our Abpromise to you: Quality guaranteed and expert technical support

---

- Replacement or refund for products not performing as stated on the datasheet
- Valid for 12 months from date of delivery
- Response to your inquiry within 24 hours
- We provide support in Chinese, English, French, German, Japanese and Spanish
- Extensive multi-media technical resources to help you
- We investigate all quality concerns to ensure our products perform to the highest standards

If the product does not perform as described on this datasheet, we will offer a refund or replacement. For full details of the Abpromise, please visit <https://www.abcam.com/abpromise> or contact our technical team.

### Terms and conditions

---

- Guarantee only valid for products bought direct from Abcam or one of our authorized distributors