

## Product datasheet

# Anti-Integrin beta 1 + Integrin alpha 3 antibody ab217145

[1 References](#) [2 Images](#)

### Overview

<b>Product name</b>	Anti-Integrin beta 1 + Integrin alpha 3 antibody
<b>Description</b>	Rabbit polyclonal to Integrin beta 1 + Integrin alpha 3
<b>Host species</b>	Rabbit
<b>Tested applications</b>	<b>Suitable for:</b> WB, IHC-P
<b>Species reactivity</b>	<b>Reacts with:</b> Mouse, Rat, Human
<b>Immunogen</b>	<p><b>This product was produced with the following immunogens:</b></p> <p>Synthetic peptide within Human Integrin alpha 3 aa 976-1025 conjugated to keyhole limpet haemocyanin. The exact sequence is proprietary.</p> <p>Sequence:</p> <p>VDIDSELVEELPAEIELWLVLVAVGAGLLLLGLIILLWKC GFFKRARTR</p>

Database link: [P26006](#)

Synthetic peptide within Human Integrin beta 1 aa 35-47 conjugated to keyhole limpet haemocyanin. The exact sequence is proprietary.

Sequence: CGECIQAGPNCGW

Database link: [P05556](#)



### General notes

Reproducibility is key to advancing scientific discovery and accelerating scientists' next breakthrough.

Abcam is leading the way with our range of recombinant antibodies, knockout-validated antibodies and knockout cell lines, all of which support improved reproducibility.

We are also planning to innovate the way in which we present recommended applications and species on our product datasheets, so that only applications & species that have been tested in our own labs, our suppliers or by selected trusted collaborators are covered by our Abpromise™ guarantee.

In preparation for this, we have started to update the applications & species that this product is Abpromise guaranteed for.

We are also updating the applications & species that this product has been "predicted to work

with," however this information is not covered by our Abpromise guarantee.

Applications & species from publications and Abreviews that have not been tested in our own labs or in those of our suppliers are not covered by the Abpromise guarantee.

Please check that this product meets your needs before purchasing. If you have any questions, special requirements or concerns, please send us an inquiry and/or contact our Support team ahead of purchase. Recommended alternatives for this product can be found below, as well as customer reviews and Q&As.

## Properties

---

<b>Form</b>	Liquid
<b>Storage instructions</b>	Shipped at 4°C. Store at +4°C short term (1-2 weeks). Upon delivery aliquot. Store at -20°C long term. Avoid freeze / thaw cycle.
<b>Storage buffer</b>	Preservative: 0.09% Sodium azide Constituents: 1% BSA, 50% Glycerol
<b>Purity</b>	Protein A purified
<b>Clonality</b>	Polyclonal
<b>Isotype</b>	IgG

## Applications

---

Our [Abpromise guarantee](#) covers the use of **ab217145** in the following tested applications.

The application notes include recommended starting dilutions; optimal dilutions/concentrations should be determined by the end user.

Application	Abreviews	Notes
WB		1/100 - 1/1000. Predicted molecular weight: 117 kDa.
IHC-P		1/100 - 1/500.

---

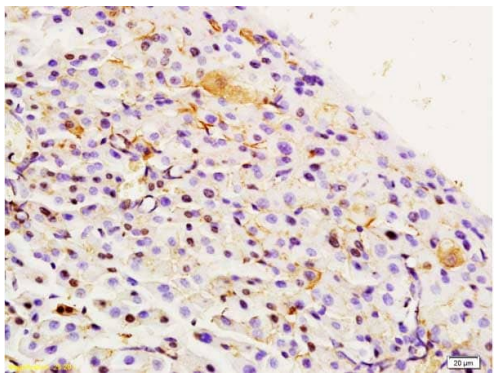
## Target

---

<b>Cellular localization</b>	Integrin beta 1: Cell membrane, sarcolemma. Cell junction. In cardiac muscle, isoform 5 is found in costameres and intercalated disks and Cell membrane. Cell projection, invadopodium membrane. Cell projection, ruffle membrane. Recycling endosome. Melanosome. Cleavage furrow. Cell projection, lamellipodium. Cell projection, ruffle. Cell junction, focal adhesion. Cell surface. Isoform 2 does not localize to focal adhesions. Highly enriched in stage I melanosomes. Located on plasma membrane of neuroblastoma NMB7 cells. In a lung cancer cell line, in prometaphase and metaphase, localizes diffusely at the membrane and in a few intracellular vesicles. In early telophase, detected mainly on the matrix-facing side of the cells. By mid-telophase, concentrated to the ingressing cleavage furrow, mainly to the basal side of the furrow. In late telophase, concentrated to the extending protrusions formed at the opposite ends of the spreading daughter cells, in vesicles at the base of the lamellipodia formed by the separating daughter cells. Colocalizes with ITGB1BP1 and metastatic suppressor protein NME2 at the edge or peripheral ruffles and lamellipodia during the early stages of cell spreading on fibronectin or
------------------------------	--

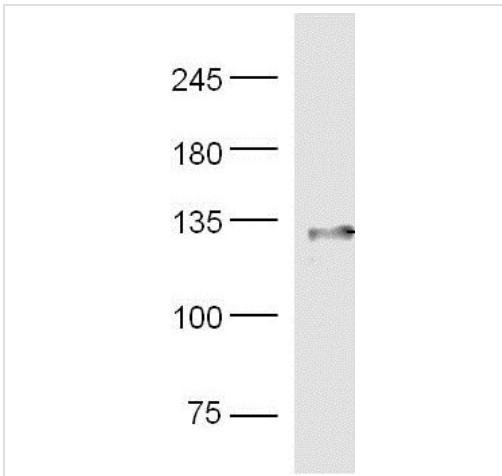
collagen. Translocates from peripheral focal adhesions sites to fibrillar adhesions in a ITGB1BP1-dependent manner. Enriched preferentially at invadopodia, cell membrane protrusions that correspond to sites of cell invasion, in a collagen-dependent manner. Localized at plasma and ruffle membranes in a collagen-independent manner. Integrin alpha 3: Membrane.

## Images



Immunohistochemistry (Formalin/PFA-fixed paraffin-embedded sections) - Anti-Integrin beta 1 + Integrin alpha 3 antibody (ab217145)

Immunohistochemical analysis of formalin-fixed, paraffin-embedded rat pancreas tissue labeling Integrin alpha 3+beta 1 with ab217145 at 1/200 dilution, followed by conjugation to the secondary antibody and DAB staining.



Western blot - Anti-Integrin beta 1 + Integrin alpha 3 antibody (ab217145)

Anti-Integrin beta 1 + Integrin alpha 3 antibody (ab217145) at 1/300 dilution + Mouse lung lysate

### Secondary

Goat Anti-Goat Anti-Rabbit IgG Antibody (H+L), HRP at 1/500 dilution

**Predicted band size:** 117 kDa

**Please note:** All products are "FOR RESEARCH USE ONLY. NOT FOR USE IN DIAGNOSTIC PROCEDURES"

## Our Promise to you: Quality guaranteed and expert technical support

- Replacement or refund for products not performing as stated on the datasheet
- Valid for 12 months from date of delivery
- Response to your inquiry within 24 hours

- We provide support in Chinese, English, French, German, Japanese and Spanish
- Extensive multi-media technical resources to help you
- We investigate all quality concerns to ensure our products perform to the highest standards

If the product does not perform as described on this datasheet, we will offer a refund or replacement. For full details of the Abpromise, please visit <https://www.abcam.com/abpromise> or contact our technical team.

### **Terms and conditions**

---

- Guarantee only valid for products bought direct from Abcam or one of our authorized distributors