


Product datasheet

Anti-Interferon beta antibody ab140211

5 References 2 Images

Overview

| | |
|----------------------------|-----------------------------------------------------------------------------------------------------------------------------------------------------------------------------|
| Product name | Anti-Interferon beta antibody |
| Description | Rabbit polyclonal to Interferon beta |
| Host species | Rabbit |
| Tested applications | Suitable for: WB, IHC-P |
| Species reactivity | Reacts with: Human Predicted to work with: Rat  |
| Immunogen | Recombinant fragment, corresponding to amino acids 23-187 of Human Interferon beta (BC096150). Run BLAST with ExPASy Run BLAST with NCBI |
| Positive control | Human Fetal lung and Fetal liver lysates, cervical carcinoma tissue. |

Properties

| | |
|-----------------------------|---------------------------------------------------------------------------------------------------------------------------------------------------------------------------------------------------------------------|
| Form | Lyophilised:Reconstitute with 200ul distilled sterile water. Please note that if you receive this product in liquid form it has already been reconstituted as described and no further reconstitution is necessary. |
| Storage instructions | Shipped at 4°C. Store at -20°C. Avoid freeze / thaw cycle. |
| Storage buffer | pH: 7.20 Preservative: 0.02% Sodium azide Constituents: 98% PBS, 1% BSA |
| Purity | Immunogen affinity purified |
| Clonality | Polyclonal |
| Isotype | IgG |

Applications

Our [Abpromise guarantee](#) covers the use of **ab140211** in the following tested applications.

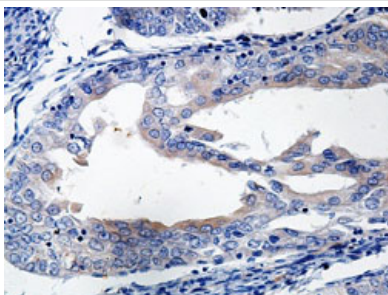
The application notes include recommended starting dilutions; optimal dilutions/concentrations should be determined by the end user.

| Application | Abreviews | Notes |
|-------------|-----------|-----------------------------------------------------|
| WB | | 1/500 - 1/1000. Predicted molecular weight: 22 kDa. |
| IHC-P | | 1/100 - 1/500. |

Target

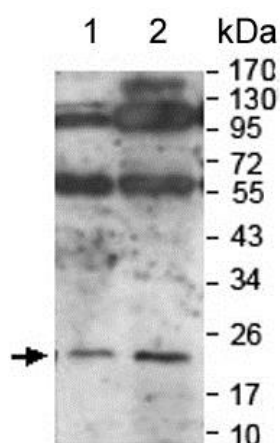
| | |
|------------------------------|---------------------------------------------------------|
| Function | Has antiviral, antibacterial and anticancer activities. |
| Sequence similarities | Belongs to the alpha/beta interferon family. |
| Cellular localization | Secreted. |

Images



Immunohistochemical analysis of formalin-fixed, paraffin-embedded cervical carcinoma tissue labelling Interferon beta with ab140211 at 1/100 dilution.

Immunohistochemistry (Formalin/PFA-fixed paraffin-embedded sections) - Anti-Interferon beta antibody (ab140211)



All lanes : Anti-Interferon beta antibody (ab140211) at 1/500 dilution

Lane 1 : Human Fetal lung lysate

Lane 2 : Human Fetal liver lysate

Predicted band size: 22 kDa

Western blot - Anti-Interferon beta antibody (ab140211)

Please note: All products are "FOR RESEARCH USE ONLY. NOT FOR USE IN DIAGNOSTIC PROCEDURES"

Our Abpromise to you: Quality guaranteed and expert technical support

- Replacement or refund for products not performing as stated on the datasheet
- Valid for 12 months from date of delivery
- Response to your inquiry within 24 hours

- We provide support in Chinese, English, French, German, Japanese and Spanish
- Extensive multi-media technical resources to help you
- We investigate all quality concerns to ensure our products perform to the highest standards

If the product does not perform as described on this datasheet, we will offer a refund or replacement. For full details of the Abpromise, please visit <https://www.abcam.com/abpromise> or contact our technical team.

Terms and conditions

- Guarantee only valid for products bought direct from Abcam or one of our authorized distributors