




Product datasheet

Anti-INTS11 antibody ab224765

3 Images

Overview

Product name	Anti-INTS11 antibody
Description	Rabbit polyclonal to INTS11
Host species	Rabbit
Tested applications	Suitable for: IHC-P, WB
Species reactivity	Reacts with: Mouse, Rat, Human Predicted to work with: Cow, Orangutan 
Immunogen	Recombinant fragment corresponding to Human INTS11 aa 401-500. Sequence: LVGQAEPEVLLVHGEAKKMEFLKQKIEQELRVNCYM PANGETVTLPTSP SIPVGISLGLLKREMAQGLLPEAKKPRLLHGTLIMKDSN FRLVSSEQALK Database link: Q5TA45  Run BLAST with  Run BLAST with
Positive control	WB: RT4, U-251 MG sp, NIH/3T3 and NBT-II cell lysates. IHC-P: Human kidney tissue.
General notes	This product was previously labelled as INT11

Properties

Form	Liquid
Storage instructions	Shipped at 4°C. Store at +4°C short term (1-2 weeks). Upon delivery aliquot. Store at -20°C long term. Avoid freeze / thaw cycle.
Storage buffer	pH: 7.20 Preservative: 0.02% Sodium azide Constituents: 40% Glycerol, PBS
Purity	Immunogen affinity purified
Clonality	Polyclonal
Isotype	IgG

Applications

Our [Abpromise guarantee](#) covers the use of **ab224765** in the following tested applications.

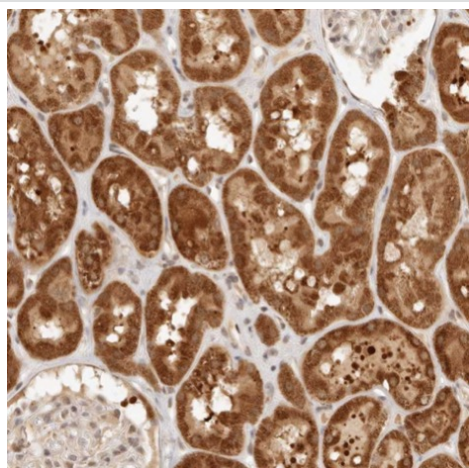
The application notes include recommended starting dilutions; optimal dilutions/concentrations should be determined by the end user.

Application	Abreviews	Notes
IHC-P		1/50 - 1/200. Perform heat mediated antigen retrieval with citrate buffer pH 6 before commencing with IHC staining protocol.
WB		1/100 - 1/250. Predicted molecular weight: 68 kDa.

Target

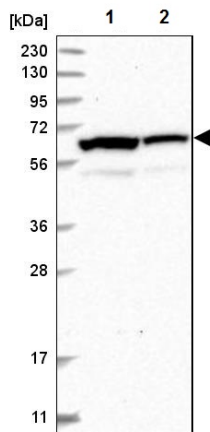
Function	Catalytic component of the Integrator complex, a complex involved in the small nuclear RNAs (snRNA) U1 and U2 transcription and in their 3'-box-dependent processing. The Integrator complex is associated with the C-terminal domain (CTD) of RNA polymerase II largest subunit (POLR2A) and is recruited to the U1 and U2 snRNAs genes. Mediates the snRNAs 3' cleavage.
Sequence similarities	Belongs to the metallo-beta-lactamase superfamily. RNA-metabolizing metallo-beta-lactamase-like family. INTS11 subfamily.
Domain	The HXHXDH motif is essential for the endoribonuclease activity of the CPSF complex.
Cellular localization	Nucleus. Cytoplasm.

Images



Paraffin-embedded human kidney tissue stained for INTS11 using ab224765 at 1/50 dilution in immunohistochemical analysis.

Immunohistochemistry (Formalin/PFA-fixed paraffin-embedded sections) - Anti-INTS11 antibody (ab224765)



Western blot - Anti-INTS11 antibody (ab224765)

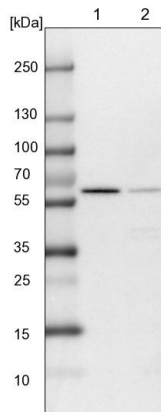
All lanes : Anti-INTS11 antibody (ab224765) at 1/100 dilution

Lane 1 : RT4 (human urinary bladder cancer cell line) cell lysate

Lane 2 : U-251 MG sp cell lysate

Developed using the ECL technique.

Predicted band size: 68 kDa



Western blot - Anti-INTS11 antibody (ab224765)

All lanes : Anti-INTS11 antibody (ab224765) at 1/100 dilution

Lane 1 : NIH/3T3 (mouse embryo fibroblast cell line) cell lysate

Lane 2 : NBT-II cell lysate

Developed using the ECL technique.

Predicted band size: 68 kDa

Please note: All products are "FOR RESEARCH USE ONLY. NOT FOR USE IN DIAGNOSTIC PROCEDURES"

Our Abpromise to you: Quality guaranteed and expert technical support

- Replacement or refund for products not performing as stated on the datasheet
- Valid for 12 months from date of delivery
- Response to your inquiry within 24 hours
- We provide support in Chinese, English, French, German, Japanese and Spanish
- Extensive multi-media technical resources to help you
- We investigate all quality concerns to ensure our products perform to the highest standards

If the product does not perform as described on this datasheet, we will offer a refund or replacement. For full details of the Abpromise,

please visit <https://www.abcam.com/abpromise> or contact our technical team.

Terms and conditions

- Guarantee only valid for products bought direct from Abcam or one of our authorized distributors