


## Product datasheet

# Anti-INTS11 antibody ab84719

[1 References](#) [1 Image](#)

### Overview

---

<b>Product name</b>	Anti-INTS11 antibody
<b>Description</b>	Rabbit polyclonal to INTS11
<b>Host species</b>	Rabbit
<b>Tested applications</b>	<b>Suitable for:</b> IHC-P
<b>Species reactivity</b>	<b>Reacts with:</b> Human <b>Predicted to work with:</b> Horse, Chimpanzee, Rhesus monkey, Gorilla, Opossum, Orangutan, Elephant 
<b>Immunogen</b>	Synthetic peptide corresponding to Human INTS11 aa 550-600. Database link: <a href="#">NP_060341.2</a>
<b>Positive control</b>	Human breast carcinoma, prostate carcinoma.
<b>General notes</b>	This product was previously labelled as INT11

Reproducibility is key to advancing scientific discovery and accelerating scientists' next breakthrough.

Abcam is leading the way with our range of recombinant antibodies, knockout-validated antibodies and knockout cell lines, all of which support improved reproducibility.

We are also planning to innovate the way in which we present recommended applications and species on our product datasheets, so that only applications & species that have been tested in our own labs, our suppliers or by selected trusted collaborators are covered by our Abpromise™ guarantee.

In preparation for this, we have started to update the applications & species that this product is Abpromise guaranteed for.

We are also updating the applications & species that this product has been “predicted to work with,” however this information is not covered by our Abpromise guarantee.

Applications & species from publications and Abreviews that have not been tested in our own labs or in those of our suppliers are not covered by the Abpromise guarantee.

Please check that this product meets your needs before purchasing. If you have any questions, special requirements or concerns, please send us an inquiry and/or contact our Support team ahead of purchase. Recommended alternatives for this product can be found below, as well as customer reviews and Q&As.

## Properties

---

<b>Form</b>	Liquid
<b>Storage instructions</b>	Shipped at 4°C. Upon delivery aliquot and store at -20°C. Avoid freeze / thaw cycles.
<b>Storage buffer</b>	pH: 6.8 Preservative: 0.09% Sodium azide Constituents: Tris buffered saline, 0.1% BSA
<b>Purity</b>	Immunogen affinity purified
<b>Clonality</b>	Polyclonal
<b>Isotype</b>	IgG

## Applications

---

Our [Abpromise guarantee](#) covers the use of **ab84719** in the following tested applications.

The application notes include recommended starting dilutions; optimal dilutions/concentrations should be determined by the end user.

Application	Abreviews	Notes
-------------	-----------	-------

IHC-P

<b>Application notes</b>	IHC-P: 1/100 - 1/500. Epitope exposure is recommended. Epitope exposure with citrate buffer will enhance staining.  Not yet tested in other applications. Optimal dilutions/concentrations should be determined by the end user.
--------------------------	---

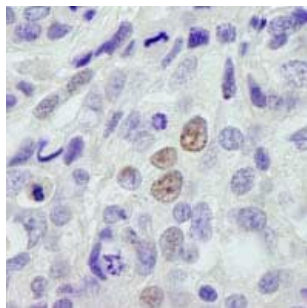
## Target

---

<b>Function</b>	Catalytic component of the Integrator complex, a complex involved in the small nuclear RNAs (snRNA) U1 and U2 transcription and in their 3'-box-dependent processing. The Integrator complex is associated with the C-terminal domain (CTD) of RNA polymerase II largest subunit (POLR2A) and is recruited to the U1 and U2 snRNAs genes. Mediates the snRNAs 3' cleavage.
<b>Sequence similarities</b>	Belongs to the metallo-beta-lactamase superfamily. RNA-metabolizing metallo-beta-lactamase-like family. INTS11 subfamily.
<b>Domain</b>	The HXHXDH motif is essential for the endoribonuclease activity of the CPSF complex.
<b>Cellular localization</b>	Nucleus. Cytoplasm.

## Images

---



Detection of Human INTS11 by Immunohistochemistry. Sample: FFPE section of Human breast carcinoma. Antibody: ab84719 used at a dilution of 1/250. Detection: DAB staining.

Immunohistochemistry (Formalin/PFA-fixed paraffin-embedded sections) - Anti-INTS11 antibody (ab84719)

**Please note:** All products are "FOR RESEARCH USE ONLY. NOT FOR USE IN DIAGNOSTIC PROCEDURES"

### Our Abpromise to you: Quality guaranteed and expert technical support

---

- Replacement or refund for products not performing as stated on the datasheet
- Valid for 12 months from date of delivery
- Response to your inquiry within 24 hours
- We provide support in Chinese, English, French, German, Japanese and Spanish
- Extensive multi-media technical resources to help you
- We investigate all quality concerns to ensure our products perform to the highest standards

If the product does not perform as described on this datasheet, we will offer a refund or replacement. For full details of the Abpromise, please visit <https://www.abcam.com/abpromise> or contact our technical team.

### Terms and conditions

---

- Guarantee only valid for products bought direct from Abcam or one of our authorized distributors