



Product datasheet

Anti-INTS9 antibody ab234700

4 Images

Overview

<b>Product name</b>	Anti-INTS9 antibody
<b>Description</b>	Rabbit polyclonal to INTS9
<b>Host species</b>	Rabbit
<b>Tested applications</b>	<b>Suitable for:</b> IHC-P, WB, ICC/IF
<b>Species reactivity</b>	<b>Reacts with:</b> Human <b>Predicted to work with:</b> Cow, Cynomolgus monkey ▲
<b>Immunogen</b>	Recombinant fragment corresponding to Human INTS9 aa 368-658. Sequence:  IQTNKCLKHYPYIHGDFSNDFRQPCVVFTGHPSLRFQDV VHFMEWLWGKSSL NTVIFTEPDFSYLEALAPYQPLAMKCIYCPIDTRLNFIQV SKLLKEVQPL HVVCPEQYQPPPAQSHRMDLMIDCQPPAMSYRRAE VLALPFKRRYEKIE IMPELADSLVPMIEIKPGISLATVSAVLHTKDNKHLQPP PRPAQPTSGKK RKRVSDDVPDCKVLKPLLSGSIPVEQFVQTLEKHGFS DIKVEDTAKGHV LLQEAETLIQIEEDSTHICDNDEMLRVRLRDLVLKFLQK F  Database link: <a href="#">Q9NV88</a>  <div style="text-align: right;">  <a href="#">Run BLAST with</a>      <a href="#">Run BLAST with</a> </div>
<b>Positive control</b>	WB: Jurkat, HeLa and MCF7 whole cell lysates. IHC-P: Human prostate cancer and ovarian cancer tissue. ICC/IF: HeLa cells.
<b>General notes</b>	This product was previously labelled as RC74

Properties

<b>Form</b>	Liquid
<b>Storage instructions</b>	Shipped at 4°C. Store at +4°C short term (1-2 weeks). Upon delivery aliquot. Store at -20°C long

term. Avoid freeze / thaw cycle.

<b>Storage buffer</b>	pH: 7.40 Preservative: 0.03% Proclin Constituents: PBS, 50% Glycerol
<b>Purity</b>	Protein G purified
<b>Purification notes</b>	Purity >95%.
<b>Clonality</b>	Polyclonal
<b>Isotype</b>	IgG

## Applications

---

Our [Abpromise guarantee](#) covers the use of **ab234700** in the following tested applications.

The application notes include recommended starting dilutions; optimal dilutions/concentrations should be determined by the end user.

Application	Abreviews	Notes
IHC-P		1/20 - 1/200.
WB		1/2000 - 1/5000. Predicted molecular weight: 74, 71 kDa.
ICC/IF		1/50 - 1/200.

## Target

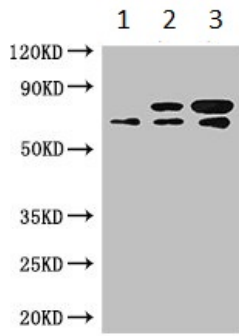
---

<b>Function</b>	Component of the Integrator complex, a complex involved in the small nuclear RNAs (snRNA) U1 and U2 transcription and in their 3'-box-dependent processing. The Integrator complex is associated with the C-terminal domain (CTD) of RNA polymerase II largest subunit (POLR2A) and is recruited to the U1 and U2 snRNAs genes.
<b>Sequence similarities</b>	Belongs to the metallo-beta-lactamase superfamily. RNA-metabolizing metallo-beta-lactamase-like family. INTS9 subfamily.
<b>Cellular localization</b>	Nucleus.

---

## Images

---



Western blot - Anti-INTS9 antibody (ab234700)

**All lanes :** Anti-INTS9 antibody (ab234700) at 1/2000 dilution

**Lane 1 :** Jurkat (human T cell leukemia cell line from peripheral blood) whole cell lysate

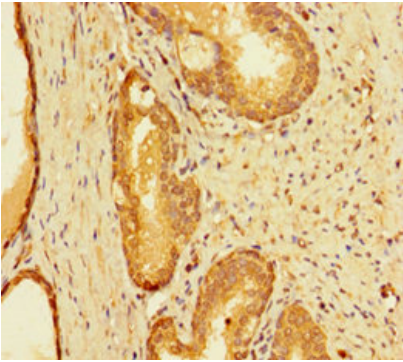
**Lane 2 :** HeLa (human epithelial cell line from cervix adenocarcinoma) whole cell lysate

**Lane 3 :** MCF7 (human breast adenocarcinoma cell line) whole cell lysate

**Secondary**

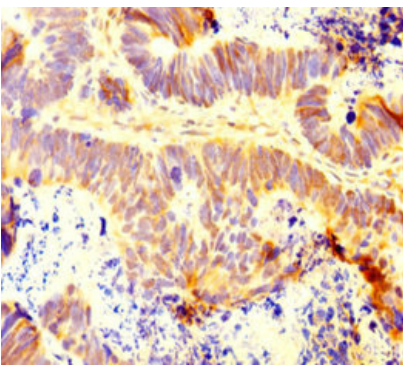
**All lanes :** Goat polyclonal to rabbit IgG at 1/50000 dilution

**Predicted band size:** 74, 71 kDa



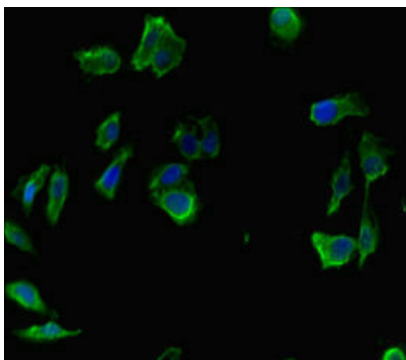
Immunohistochemistry (Formalin/PFA-fixed paraffin-embedded sections) - Anti-INTS9 antibody (ab234700)

Paraffin-embedded human prostate cancer tissue stained for INTS9 using ab234700 at 1/100 dilution in immunohistochemical analysis.



Immunohistochemistry (Formalin/PFA-fixed paraffin-embedded sections) - Anti-INTS9 antibody (ab234700)

Paraffin-embedded human ovarian cancer tissue stained for INTS9 using ab234700 at 1/100 dilution in immunohistochemical analysis.



HeLa (human epithelial cell line from cervix adenocarcinoma) cells stained for INTS9 (green) using ab234700 at 1/100 dilution in ICC/IF, followed by Alexa Fluor 488<sup>®</sup> conjugated Goat Anti-Rabbit IgG (H+L).

Immunocytochemistry/ Immunofluorescence - Anti-INTS9 antibody (ab234700)

**Please note:** All products are "FOR RESEARCH USE ONLY. NOT FOR USE IN DIAGNOSTIC PROCEDURES"

### Our Abpromise to you: Quality guaranteed and expert technical support

---

- Replacement or refund for products not performing as stated on the datasheet
- Valid for 12 months from date of delivery
- Response to your inquiry within 24 hours
- We provide support in Chinese, English, French, German, Japanese and Spanish
- Extensive multi-media technical resources to help you
- We investigate all quality concerns to ensure our products perform to the highest standards

If the product does not perform as described on this datasheet, we will offer a refund or replacement. For full details of the Abpromise, please visit <https://www.abcam.com/abpromise> or contact our technical team.

### Terms and conditions

---

- Guarantee only valid for products bought direct from Abcam or one of our authorized distributors