

Product datasheet

Anti-INTU antibody - C-terminal ab229243

2 Images

Overview

---

|                            |  |
|----------------------------|--|
| <b>Product name</b>        | Anti-INTU antibody - C-terminal  |
| <b>Description</b>         | Rabbit polyclonal to INTU - C-terminal   |
| <b>Host species</b>        | Rabbit   |
| <b>Tested applications</b> | <b>Suitable for:</b> WB, ICC/IF  |
| <b>Species reactivity</b>  | <b>Reacts with:</b> Mouse, Human   |
| <b>Immunogen</b>           | Recombinant fragment within Human INTU (C terminal). The exact sequence is proprietary.<br>Database link: <a href="#">Q9ULD6</a> |
| <b>Positive control</b>    | WB: Mouse brain tissue lysate. ICC/IF: SK-N-SH cells.  |
| <b>General notes</b>       | This product was previously labelled as PDZD6  |

Properties

---

|                             |   |
|-----------------------------|---|
| <b>Form</b>                 | Liquid  |
| <b>Storage instructions</b> | Shipped at 4°C. Store at +4°C short term (1-2 weeks). Upon delivery aliquot. Store at -20°C long term. Avoid freeze / thaw cycle. |
| <b>Storage buffer</b>       | pH: 7.00<br>Preservative: 0.01% Thimerosal (merthiolate)<br>Constituents: PBS, 20% Glycerol                                       |
| <b>Purity</b>               | Immunogen affinity purified   |
| <b>Clonality</b>            | Polyclonal  |
| <b>Isotype</b>              | IgG   |

Applications

---

Our [Abpromise guarantee](#) covers the use of **ab229243** in the following tested applications.

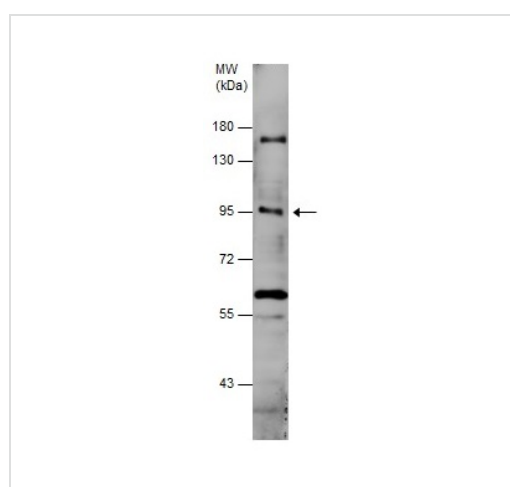
The application notes include recommended starting dilutions; optimal dilutions/concentrations should be determined by the end user.

| Application | Abreviews | Notes  |
|-------------|-----------|--|
| WB          |           | 1/500 - 1/3000. Predicted molecular weight: 106 kDa. |
| ICC/IF      |           | 1/100 - 1/1000.                                      |

## Target

**Sequence similarities** Belongs to the inturned family.  
Contains 1 PDZ (DHR) domain.

## Images



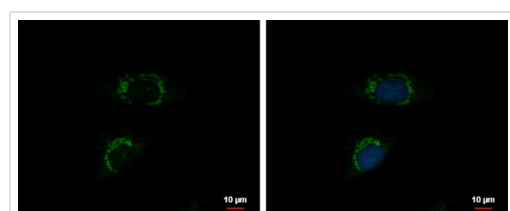
Anti-INTU antibody - C-terminal (ab229243) at 1/500 dilution +  
Mouse brain tissue lysate at 50 µg

Developed using the ECL technique.

**Predicted band size:** 106 kDa

7.5% SDS-PAGE

Western blot - Anti-INTU antibody - C-terminal  
(ab229243)



SK-N-SH cells stained for INTU (green) using ab229243 at 1/500 dilution in ICC/IF. Cells were fixed in 4% paraformaldehyde at RT for 15 minutes. Hoechst 33342 staining (blue).

Immunocytochemistry/ Immunofluorescence - Anti-  
INTU antibody - C-terminal (ab229243)

**Please note:** All products are "FOR RESEARCH USE ONLY. NOT FOR USE IN DIAGNOSTIC PROCEDURES"

## Our Abpromise to you: Quality guaranteed and expert technical support

- Replacement or refund for products not performing as stated on the datasheet

- Valid for 12 months from date of delivery
- Response to your inquiry within 24 hours
  
- We provide support in Chinese, English, French, German, Japanese and Spanish
- Extensive multi-media technical resources to help you
- We investigate all quality concerns to ensure our products perform to the highest standards

If the product does not perform as described on this datasheet, we will offer a refund or replacement. For full details of the Abpromise, please visit <https://www.abcam.com/abpromise> or contact our technical team.

### **Terms and conditions**

---

- Guarantee only valid for products bought direct from Abcam or one of our authorized distributors