

Product datasheet

Anti-Involucrin antibody [IVRN/2113R] ab234403

Recombinant

2 Images

Overview

Product name	Anti-Involucrin antibody [IVRN/2113R]
Description	Rabbit monoclonal [IVRN/2113R] to Involucrin
Host species	Rabbit
Tested applications	Suitable for: IHC-P
Species reactivity	Reacts with: Human Does not react with: Mouse
Immunogen	Recombinant full length protein corresponding to Human Involucrin aa 1-585. Sequence:

```

MSQQHTLPVTLSPALSQELLKTVPPPVNTHQEQMKQPTP
LPPPCQKVPVE
LPVEVPSKQEEKHMTAVKGLPEQECEQQQKEPQEQLQ
QQHWEQH E EYQK
AENPEQQLKQEKTRDQQLNKQLEEEKLLDQQLDQEL
VKRDEQLGMKKE
QLELPEQQEGHLKHLEQQEGQLKHPEQQEGQLELPEQ
QEGQLELPEQQE
GQLELPEQQEGQLELPEQQEGQLELPEQQEGQLELPQQ
QEGQLELSEQQE
GQLELSEQQEGQLKHLEHQEGQLEVPEEQMGQLKYLEQ
QEGQLKHL DQQE
KQPELPEQQMGQLKHLEQQEGQPKHLEQQEGQLEQLEE
QEGQLKHLEQQE
GQLEHLEHQEGQLGLPEQQVLQLKQLEKQQGQPKHLEE
EEGQLKHLVQQE
GQLKHLVQQEGQLEQQERQVEHLEQQVQQLKHLEEQEG
QLKHLEQQQGQL
EVPEQQVQGPKNLEQEEKQLELPEQQEGQVKHLEKQEA
QLELPEQQVQGP
KHLEQQEKHLEHPEQQDGGQLKHLEQQEGQLKDLEQQKG
QLEQPVFAPAPG
VQVDIQPALPTKGEVLLPVEHQQQKQEVQWPPKHK
    
```

Database link: [P07476](#)

Positive control

IHC-P: Human tonsil tissue.

General notes

Reproducibility is key to advancing scientific discovery and accelerating scientists' next breakthrough.

Abcam is leading the way with our range of recombinant antibodies, knockout-validated antibodies and knockout cell lines, all of which support improved reproducibility.

We are also planning to innovate the way in which we present recommended applications and species on our product datasheets, so that only applications & species that have been tested in our own labs, our suppliers or by selected trusted collaborators are covered by our Abpromise™ guarantee.

In preparation for this, we have started to update the applications & species that this product is Abpromise guaranteed for.

We are also updating the applications & species that this product has been “predicted to work with,” however this information is not covered by our Abpromise guarantee.

Applications & species from publications and Abreviews that have not been tested in our own labs or in those of our suppliers are not covered by the Abpromise guarantee.

Please check that this product meets your needs before purchasing. If you have any questions, special requirements or concerns, please send us an inquiry and/or contact our Support team ahead of purchase. Recommended alternatives for this product can be found below, as well as customer reviews and Q&As.

Properties

Form	Liquid
Storage instructions	Shipped at 4°C. Store at +4°C short term (1-2 weeks). Upon delivery aliquot. Store at -20°C long term. Avoid freeze / thaw cycle.
Storage buffer	Preservative: 0.05% Sodium azide Constituents: PBS, 0.05% BSA
Purity	Protein A/G purified
Purification notes	Purified from bioreactor concentrate by Protein A/G.
Clonality	Monoclonal
Clone number	MRN/2113R
Isotype	IgG

Applications

Our [Abpromise guarantee](#) covers the use of **ab234403** in the following tested applications.

The application notes include recommended starting dilutions; optimal dilutions/concentrations should be determined by the end user.

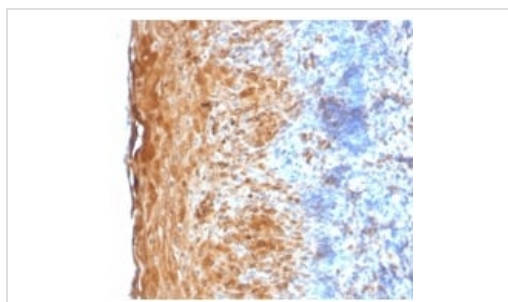
Application	Abreviews	Notes
-------------	-----------	-------

Application	Abreviews	Notes
IHC-P		Use a concentration of 0.1 - 0.2 µg/ml. Staining of formalin-fixed tissues is enhanced by digestion with trypsin or Protease XXV at 1 mg/ml PBS for 5 minutes at 37°C. (Note that enzyme digestion is better than citrate buffer based epitope unmasking). Incubate with primary antibody for 30 minutes at room temperature.

Target

Function	Part of the insoluble cornified cell envelope (CE) of stratified squamous epithelia.
Tissue specificity	Keratinocytes of epidermis and other stratified squamous epithelia.
Sequence similarities	Belongs to the involucrin family.
Post-translational modifications	Substrate of transglutaminase. Some glutamines and lysines are cross-linked to other involucrin molecules, to other proteins such as keratin, desmoplakin, periplakin and envoplakin, and to lipids like omega-hydroxyceramide.
Cellular localization	Cytoplasm. Constituent of the scaffolding of the cornified envelope.

Images



Formalin-fixed, paraffin-embedded human tonsil tissue stained for Involucrin with ab234403 at 0.2 µg/ml in immunohistochemical analysis.

Immunohistochemistry (Formalin/PFA-fixed paraffin-embedded sections) - Anti-Involucrin antibody
[IVRN/2113R] (ab234403)

Why choose a recombinant antibody?



Research with confidence
Consistent and reproducible results



Long-term and scalable supply
Recombinant technology



Success from the first experiment
Confirmed specificity



Ethical standards compliant
Animal-free production

Anti-Involucrin antibody [IVRN/2113R] (ab234403)

Please note: All products are "FOR RESEARCH USE ONLY. NOT FOR USE IN DIAGNOSTIC PROCEDURES"

Our Abpromise to you: Quality guaranteed and expert technical support

- Replacement or refund for products not performing as stated on the datasheet
- Valid for 12 months from date of delivery
- Response to your inquiry within 24 hours
- We provide support in Chinese, English, French, German, Japanese and Spanish
- Extensive multi-media technical resources to help you
- We investigate all quality concerns to ensure our products perform to the highest standards

If the product does not perform as described on this datasheet, we will offer a refund or replacement. For full details of the Abpromise, please visit <https://www.abcam.com/abpromise> or contact our technical team.

Terms and conditions

- Guarantee only valid for products bought direct from Abcam or one of our authorized distributors