

## Product datasheet

# Anti-Involucrin antibody [IVRN/2113R] - BSA and Azide free ab236273

Recombinant

[2 Images](#)

### Overview

<b>Product name</b>	Anti-Involucrin antibody [IVRN/2113R] - BSA and Azide free
<b>Description</b>	Rabbit monoclonal [IVRN/2113R] to Involucrin - BSA and Azide free
<b>Host species</b>	Rabbit
<b>Tested applications</b>	<b>Suitable for:</b> IHC-P
<b>Species reactivity</b>	<b>Reacts with:</b> Human <b>Does not react with:</b> Mouse
<b>Immunogen</b>	Recombinant full length protein corresponding to Human Involucrin aa 1-585. Sequence:  MSQQHTLPVTLSPALSQELLKTVPPPVNTHQEQMKQPTP LPPPCQKVPVE LPVEVPSKQEEKHMTAVKGLPEQECEQQQKEPQEQLQ QQHWEQHHEEYQK AENPEQQLKQEKTRDQQLNKQLEEEKLLDQQLDQEL VKRDEQLGMKKE QLELPEQQEGHLKHLEQQEGQLKHPEQQEGQLELPEQ QEGQLELPEQQE GQLELPEQQEGQLELPEQQEGQLELPEQQEGQLELPQQ QEGQLELSEQQE GQLELSEQQEGQLKHLEHQEGQLEVPEEQMGQLKYLEQ QEGQLKHLDDQQE KQPELPEQQMGQLKHLEQQEGQPKHLEQQEGQLEQLEE QEGQLKHLEQQE GQLEHLEHQEGQLGLPEQQVLQLKQLEKQQGQPKHLEE EEGQLKHLVQQE GQLKHLVQQEGQLEQQERQVEHLEQQVQGLKHLEEQEG QLKHLEQQQGQL EVPEQQVQPKNLEQEEKQLELPEQQEGQVKHLEKQEA QLELPEQQVQGP KHLEQQEKHLEHPEQQDGGQLKHLEQQEGQLKDLEQQKG QLEQPVFAPAPG QVQDIQPALPTKGEVLLPVEHQQQKQEVQWPPKHK

Database link: [P07476](#)

 [Run BLAST with](#)

 [Run BLAST with](#)

## Positive control

IHC-P: Human tonsil tissue.

## General notes

Reproducibility is key to advancing scientific discovery and accelerating scientists' next breakthrough.

Abcam is leading the way with our range of recombinant antibodies, knockout-validated antibodies and knockout cell lines, all of which support improved reproducibility.

We are also planning to innovate the way in which we present recommended applications and species on our product datasheets, so that only applications & species that have been tested in our own labs, our suppliers or by selected trusted collaborators are covered by our Abpromise™ guarantee.

In preparation for this, we have started to update the applications & species that this product is Abpromise guaranteed for.

We are also updating the applications & species that this product has been “predicted to work with,” however this information is not covered by our Abpromise guarantee.

Applications & species from publications and Abreviews that have not been tested in our own labs or in those of our suppliers are not covered by the Abpromise guarantee.

Please check that this product meets your needs before purchasing. If you have any questions, special requirements or concerns, please send us an inquiry and/or contact our Support team ahead of purchase. Recommended alternatives for this product can be found below, as well as customer reviews and Q&As.

## Properties

<b>Form</b>	Liquid
<b>Storage instructions</b>	Shipped at 4°C. Store at +4°C short term (1-2 weeks). Upon delivery aliquot. Store at -20°C long term. Avoid freeze / thaw cycle.
<b>Storage buffer</b>	Constituent: PBS
<b>Carrier free</b>	Yes
<b>Purity</b>	Protein A/G purified
<b>Purification notes</b>	Purified from bioreactor concentrate by Protein A/G.
<b>Clonality</b>	Monoclonal
<b>Clone number</b>	VRN/2113R
<b>Isotype</b>	IgG

## Applications

Our [Abpromise guarantee](#) covers the use of **ab236273** in the following tested applications.

The application notes include recommended starting dilutions; optimal dilutions/concentrations should be determined by the end user.

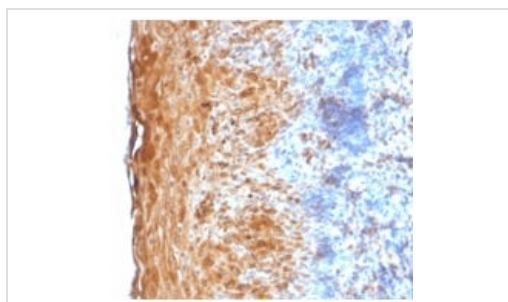
Application	Abreviews	Notes
-------------	-----------	-------

Application	Abreviews	Notes
IHC-P		Use a concentration of 0.1 - 0.2 µg/ml. Staining of formalin-fixed tissues is enhanced by digestion with trypsin or Protease XXV at 1 mg/ml PBS for 5 minutes at 37°C. (Note that enzyme digestion is better than citrate buffer based epitope unmasking). Incubate with primary antibody for 30 minutes at room temperature.

## Target

<b>Function</b>	Part of the insoluble cornified cell envelope (CE) of stratified squamous epithelia.
<b>Tissue specificity</b>	Keratinocytes of epidermis and other stratified squamous epithelia.
<b>Sequence similarities</b>	Belongs to the involucrin family.
<b>Post-translational modifications</b>	Substrate of transglutaminase. Some glutamines and lysines are cross-linked to other involucrin molecules, to other proteins such as keratin, desmoplakin, periplakin and envoplakin, and to lipids like omega-hydroxyceramide.
<b>Cellular localization</b>	Cytoplasm. Constituent of the scaffolding of the cornified envelope.

## Images



Formalin-fixed, paraffin-embedded human tonsil tissue stained for Involucrin with [ab234403](#) at 0.2 µg/ml in immunohistochemical analysis.

This data was developed using the same antibody clone in a different buffer formulation containing PBS, BSA and sodium azide ([ab234403](#)).

Immunohistochemistry (Formalin/PFA-fixed paraffin-embedded sections) - Anti-Involucrin antibody [IVRN/2113R] - BSA and Azide free ([ab236273](#))

### Why choose a recombinant antibody?



**Research with confidence**  
Consistent and reproducible results



**Long-term and scalable supply**  
Recombinant technology



**Success from the first experiment**  
Confirmed specificity



**Ethical standards compliant**  
Animal-free production

Anti-Involucrin antibody [IVRN/2113R] - BSA and Azide free (ab236273)

**Please note:** All products are "FOR RESEARCH USE ONLY. NOT FOR USE IN DIAGNOSTIC PROCEDURES"

### Our Abpromise to you: Quality guaranteed and expert technical support

---

- Replacement or refund for products not performing as stated on the datasheet
- Valid for 12 months from date of delivery
- Response to your inquiry within 24 hours
- We provide support in Chinese, English, French, German, Japanese and Spanish
- Extensive multi-media technical resources to help you
- We investigate all quality concerns to ensure our products perform to the highest standards

If the product does not perform as described on this datasheet, we will offer a refund or replacement. For full details of the Abpromise, please visit <https://www.abcam.com/abpromise> or contact our technical team.

### Terms and conditions

---

- Guarantee only valid for products bought direct from Abcam or one of our authorized distributors