

Product datasheet

Anti-IP10 antibody [6D4] ab8098

★★★★★ 2 Abreviews 11 References 1 Image

Overview

Product name	Anti-IP10 antibody [6D4]
Description	Mouse monoclonal [6D4] to IP10
Host species	Mouse
Specificity	The antibody reacts specifically with Human IP-10.
Tested applications	Suitable for: Flow Cyt
Species reactivity	Reacts with: Human
Immunogen	Recombinant Human IP10
Positive control	Activated plasmacytoid dendritic cells
General notes	<p>The Life Science industry has been in the grips of a reproducibility crisis for a number of years. Abcam is leading the way in addressing this with our range of recombinant monoclonal antibodies and knockout edited cell lines for gold-standard validation. Please check that this product meets your needs before purchasing.</p> <p>If you have any questions, special requirements or concerns, please send us an inquiry and/or contact our Support team ahead of purchase. Recommended alternatives for this product can be found below, along with publications, customer reviews and Q&As</p>

Properties

Form	Liquid
Storage instructions	Shipped at 4°C. Upon delivery aliquot and store at -20°C. Avoid freeze / thaw cycles.
Storage buffer	Preservative: 0.02% Sodium azide Constituents: PBS, 0.1% BSA
Purity	Protein G purified
Purification notes	0.2 µm filtered antibody solution
Clonality	Monoclonal
Clone number	6D4
Isotype	IgG2a

Applications

The Abpromise guarantee

Our [Abpromise guarantee](#) covers the use of ab8098 in the following tested applications.

The application notes include recommended starting dilutions; optimal dilutions/concentrations should be determined by the end user.

Application	Abreviews	Notes
Flow Cyt		1/50. ab170191 - Mouse monoclonal IgG2a, is suitable for use as an isotype control with this antibody.

Target

Function

Chemotactic for monocytes and T-lymphocytes. Binds to CXCR3.

Sequence similarities

Belongs to the intercrine alpha (chemokine CxC) family.

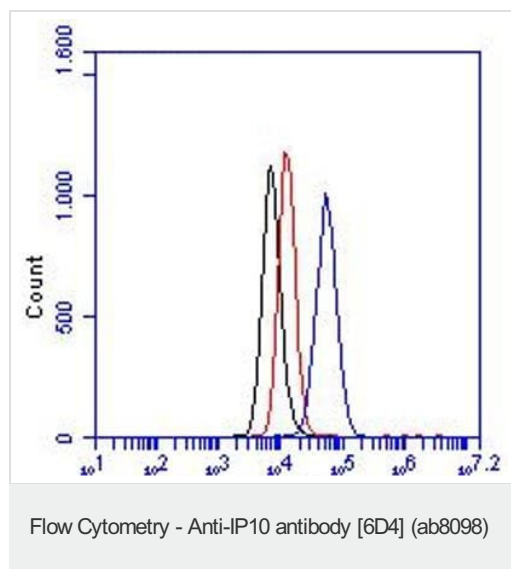
Post-translational modifications

CXCL10(1-73) is produced by proteolytic cleavage after secretion from keratinocytes.

Cellular localization

Secreted.

Images



Detection of IP-10 in HUVEC cells. Red, black and blue line represent the isotype control, cells only and ab8098 at 20 µg/ml, respectively.

Please note: All products are "FOR RESEARCH USE ONLY. NOT FOR USE IN DIAGNOSTIC PROCEDURES"

Our Abpromise to you: Quality guaranteed and expert technical support

- Replacement or refund for products not performing as stated on the datasheet
- Valid for 12 months from date of delivery
- Response to your inquiry within 24 hours
- We provide support in Chinese, English, French, German, Japanese and Spanish
- Extensive multi-media technical resources to help you

- We investigate all quality concerns to ensure our products perform to the highest standards

If the product does not perform as described on this datasheet, we will offer a refund or replacement. For full details of the Abpromise, please visit <https://www.abcam.com/abpromise> or contact our technical team.

Terms and conditions

- Guarantee only valid for products bought direct from Abcam or one of our authorized distributors