




Product datasheet

Anti-IPO11 antibody ab221615

3 Images

Overview

Product name	Anti-IPO11 antibody
Description	Rabbit polyclonal to IPO11
Host species	Rabbit
Tested applications	Suitable for: WB, IHC-P, ICC/IF
Species reactivity	Reacts with: Human Predicted to work with: Mouse 
Immunogen	Recombinant fragment corresponding to Human IPO11 aa 823-916. Sequence: QLLGNMIEMWVDRMDNITQPERRKLSALALLSLLPSDN SVIQDKFCGIIN ISVEGLHDVMTEDPETGTYKDCMLMSHLEEPKVTEDE EPPTEQD Database link: Q9UI26  Run BLAST with  Run BLAST with
Positive control	Human cerebral cortex tissue; RT-4 and U-251 MG cell lysates; U-2 OS cells.

Properties

Form	Liquid
Storage instructions	Shipped at 4°C. Store at +4°C short term (1-2 weeks). Upon delivery aliquot. Store at -20°C long term. Avoid freeze / thaw cycle.
Storage buffer	pH: 7.20 Preservative: 0.02% Sodium azide Constituents: 59% PBS, 40% Glycerol
Purity	Immunogen affinity purified
Clonality	Polyclonal
Isotype	IgG

Applications

Our [Abpromise guarantee](#) covers the use of **ab221615** in the following tested applications.

The application notes include recommended starting dilutions; optimal dilutions/concentrations should be determined by the end user.

Application	Abreviews	Notes
WB		1/500 - 1/1000. Predicted molecular weight: 113 kDa.
IHC-P		1/2500 - 1/5000. Perform heat mediated antigen retrieval with citrate buffer pH 6 before commencing with IHC staining protocol.
ICC/IF		Use a concentration of 1 - 4 µg/ml. Fixation/Permeabilization: PFA/Triton X-100.

Target

Function

Functions in nuclear protein import as nuclear transport receptor. Serves as receptor for nuclear localization signals (NLS) in cargo substrates. Is thought to mediate docking of the importin/substrate complex to the nuclear pore complex (NPC) through binding to nucleoporin and the complex is subsequently translocated through the pore by an energy requiring, Ran-dependent mechanism. At the nucleoplasmic side of the NPC, Ran binds to the importin, the importin/substrate complex dissociates and importin is re-exported from the nucleus to the cytoplasm where GTP hydrolysis releases Ran. The directionality of nuclear import is thought to be conferred by an asymmetric distribution of the GTP- and GDP-bound forms of Ran between the cytoplasm and nucleus (By similarity). Mediates the nuclear import of UBE2E3, and of RPL12.

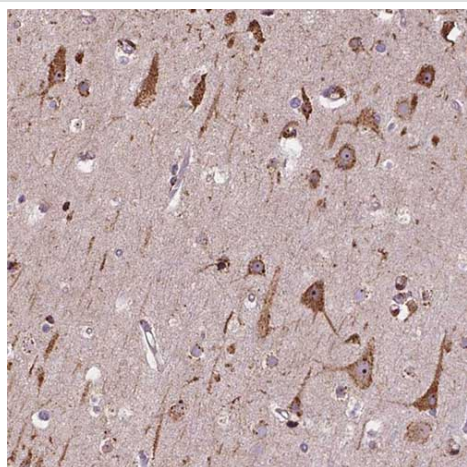
Sequence similarities

Belongs to the importin beta family.
Contains 15 HEAT repeats.
Contains 1 importin N-terminal domain.

Cellular localization

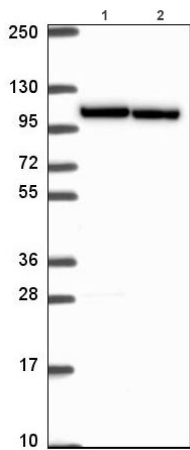
Cytoplasm. Nucleus.

Images



Immunohistochemical analysis of paraffin-embedded human cerebral cortex tissue labeling IPO11 with ab221615 at 1/2500 dilution.

Immunohistochemistry (Formalin/PFA-fixed paraffin-embedded sections) - Anti-IPO11 antibody (ab221615)



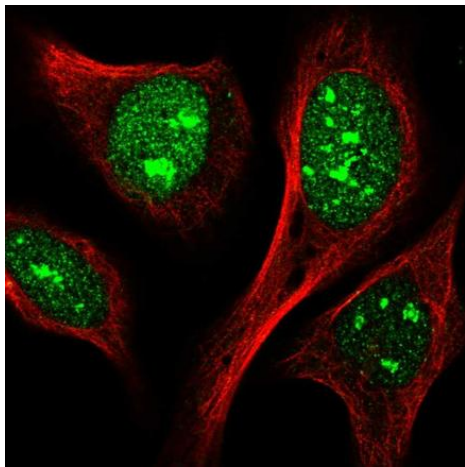
Western blot - Anti-IPO11 antibody (ab221615)

All lanes : Anti-IPO11 antibody (ab221615) at 1/500 dilution

Lane 1 : RT-4 cell lysate

Lane 2 : U-251 MG cell lysate

Predicted band size: 113 kDa



Immunocytochemistry/ Immunofluorescence - Anti-IPO11 antibody (ab221615)

Immunofluorescent analysis of PFA-fixed, Triton X-100 permeabilized U-2 OS cells labeling IPO11 with ab221615 at 4 µg/ml (green).

Please note: All products are "FOR RESEARCH USE ONLY. NOT FOR USE IN DIAGNOSTIC PROCEDURES"

Our Abpromise to you: Quality guaranteed and expert technical support

- Replacement or refund for products not performing as stated on the datasheet
- Valid for 12 months from date of delivery
- Response to your inquiry within 24 hours
- We provide support in Chinese, English, French, German, Japanese and Spanish
- Extensive multi-media technical resources to help you
- We investigate all quality concerns to ensure our products perform to the highest standards

If the product does not perform as described on this datasheet, we will offer a refund or replacement. For full details of the Abpromise, please visit <https://www.abcam.com/abpromise> or contact our technical team.

Terms and conditions

- Guarantee only valid for products bought direct from Abcam or one of our authorized distributors