




Product datasheet

Anti-IREB2/IRP2 antibody ab106926

1 References 2 Images

Overview

Product name	Anti-IREB2/IRP2 antibody
Description	Goat polyclonal to IREB2/IRP2
Host species	Goat
Tested applications	Suitable for: IHC-P, WB
Species reactivity	Reacts with: Human Predicted to work with: Mouse, Rat, Cow, Pig, Orangutan 
Immunogen	Synthetic peptide corresponding to Human IREB2/IRP2 aa 489-503 (internal sequence). Sequence: C-SIHYEGSEYKLSHGS Database link: NP_004127.1  Run BLAST with  Run BLAST with
Positive control	Human Liver lysate Human kidney
General notes	This product was previously labelled as IREB2

Reproducibility is key to advancing scientific discovery and accelerating scientists' next breakthrough.

Abcam is leading the way with our range of recombinant antibodies, knockout-validated antibodies and knockout cell lines, all of which support improved reproducibility.

We are also planning to innovate the way in which we present recommended applications and species on our product datasheets, so that only applications & species that have been tested in our own labs, our suppliers or by selected trusted collaborators are covered by our Abpromise™ guarantee.

In preparation for this, we have started to update the applications & species that this product is Abpromise guaranteed for.

We are also updating the applications & species that this product has been “predicted to work with,” however this information is not covered by our Abpromise guarantee.

Applications & species from publications and Abreviews that have not been tested in our own labs or in those of our suppliers are not covered by the Abpromise guarantee.

Please check that this product meets your needs before purchasing. If you have any questions, special requirements or concerns, please send us an inquiry and/or contact our Support team

ahead of purchase. Recommended alternatives for this product can be found below, as well as customer reviews and Q&As.

Properties

Form	Liquid
Storage instructions	Shipped at 4°C. Upon delivery aliquot and store at -20°C. Avoid freeze / thaw cycles.
Storage buffer	pH: 7.30 Preservative: 0.02% Sodium azide Constituents: Tris buffered saline, 0.5% BSA
Purity	Immunogen affinity purified
Purification notes	ab106926 was purified from goat serum by ammonium sulphate precipitation followed by antigen affinity chromatography using the immunizing peptide.
Clonality	Polyclonal
Isotype	IgG

Applications

Our [Abpromise guarantee](#) covers the use of **ab106926** in the following tested applications.

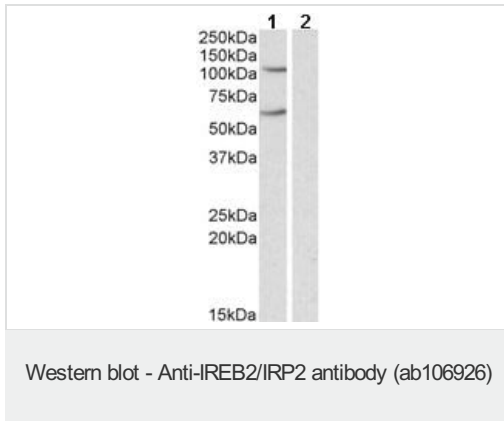
The application notes include recommended starting dilutions; optimal dilutions/concentrations should be determined by the end user.

Application	Abreviews	Notes
IHC-P		Use a concentration of 3 - 6 µg/ml.
WB		Use a concentration of 1 - 3 µg/ml. Detects a band of approximately 110 kDa (predicted molecular weight: 105 kDa). 1 hour primary incubation is recommended for this product.

Target

Function	RNA-binding protein that binds to iron-responsive elements (IRES), which are stem-loop structures found in the 5'-UTR of ferritin, and delta aminolevulinic acid synthase mRNAs, and in the 3'-UTR of transferrin receptor mRNA. Binding to the IRE element in ferritin results in the repression of its mRNA translation. Binding of the protein to the transferrin receptor mRNA inhibits the degradation of this otherwise rapidly degraded mRNA.
Sequence similarities	Belongs to the aconitase/IPM isomerase family.
Post-translational modifications	Ubiquitinated and degraded by the proteasome in presence of high level of iron and oxygen. Ubiquitinated by a SCF complex containing FBXL5. Upon iron and oxygen depletion FBXL5 is degraded, preventing ubiquitination and allowing its RNA-binding activity.
Cellular localization	Cytoplasm.

Images



All lanes : Anti-IREB2/IRP2 antibody (ab106926) at 0.3 µg/ml

Lane 1 : Human Liver lysate in RIPA buffer

Lane 2 : Human Liver lysate in RIPA buffer with immunizing peptide

Lysates/proteins at 35 µg per lane.

Developed using the ECL technique.

Predicted band size: 105 kDa

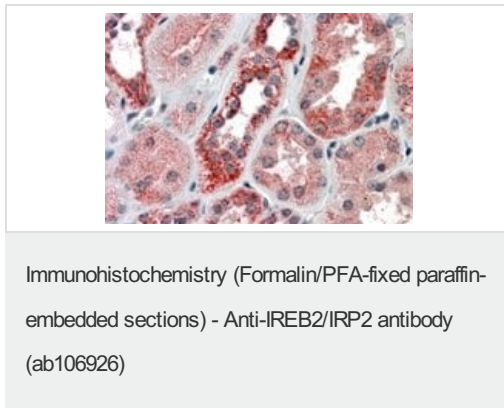
Observed band size: 110 kDa

[why is the actual band size different from the predicted?](#)

Additional bands at: 60 kDa. We are unsure as to the identity of these extra bands.

Primary incubation was 1 hour.

An additional band of unknown identity was consistently observed at 60kDa. This band was successfully blocked by incubation with the immunizing peptide.



ab106926 at 3.8 µg/ml staining IREB2/IRP2 in Human spleen by Immunohistochemistry (Formalin/PFA-fixed paraffin-embedded sections). Steamed antigen retrieval with citrate buffer pH 6 was performed. Antibody was revealed with AP-staining.

Please note: All products are "FOR RESEARCH USE ONLY. NOT FOR USE IN DIAGNOSTIC PROCEDURES"

Our Abpromise to you: Quality guaranteed and expert technical support

- Replacement or refund for products not performing as stated on the datasheet
- Valid for 12 months from date of delivery
- Response to your inquiry within 24 hours
- We provide support in Chinese, English, French, German, Japanese and Spanish
- Extensive multi-media technical resources to help you
- We investigate all quality concerns to ensure our products perform to the highest standards

If the product does not perform as described on this datasheet, we will offer a refund or replacement. For full details of the Abpromise, please visit <https://www.abcam.com/abpromise> or contact our technical team.

Terms and conditions

- Guarantee only valid for products bought direct from Abcam or one of our authorized distributors