


Product datasheet

Anti-IRF2 antibody ab217349

2 Images

Overview

<b>Product name</b>	Anti-IRF2 antibody
<b>Description</b>	Rabbit polyclonal to IRF2
<b>Host species</b>	Rabbit
<b>Tested applications</b>	<b>Suitable for:</b> IHC-P
<b>Species reactivity</b>	<b>Reacts with:</b> Mouse, Human <b>Predicted to work with:</b> Rat 
<b>Immunogen</b>	Synthetic peptide within Human IRF2 aa 100-150 conjugated to keyhole limpet haemocyanin. The exact sequence is proprietary. Database link: <a href="#">P14316</a>
<b>Positive control</b>	IHC-P: Human laryngocarcinoma tissue. Mouse intestine tissue.

Properties

<b>Form</b>	Liquid
<b>Storage instructions</b>	Shipped at 4°C. Store at +4°C short term (1-2 weeks). Upon delivery aliquot. Store at -20°C. Avoid freeze / thaw cycle.
<b>Storage buffer</b>	Preservative: 0.09% Sodium azide Constituents: 50% Glycerol, 1% BSA
<b>Purity</b>	Protein A purified
<b>Clonality</b>	Polyclonal
<b>Isotype</b>	IgG

Applications

Our [Abpromise guarantee](#) covers the use of **ab217349** in the following tested applications.

The application notes include recommended starting dilutions; optimal dilutions/concentrations should be determined by the end user.

Application	Abreviews	Notes
IHC-P		1/100 - 1/500.

## Target

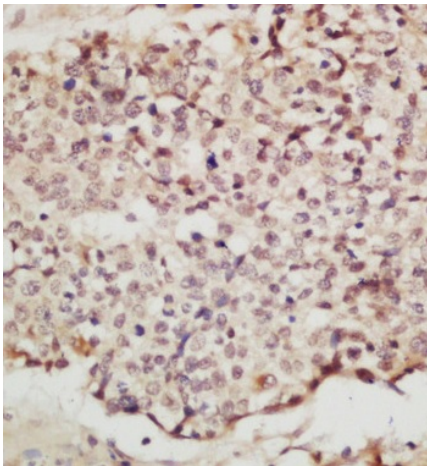
---

<b>Function</b>	Specifically binds to the upstream regulatory region of type I IFN and IFN-inducible MHC class I genes (the interferon consensus sequence (ICS)) and represses those genes. Also acts as an activator for several genes including H4 and IL7. Constitutively binds to the ISRE promoter to activate IL7. Involved in cell cycle regulation through binding the site II (HiNF-M) promoter region of H4 and activating transcription during cell growth. Antagonizes IRF1 transcriptional activation.
<b>Tissue specificity</b>	Expressed throughout the epithelium of the colon. Also expressed in lamina propria.
<b>Sequence similarities</b>	Belongs to the IRF family. Contains 1 IRF tryptophan pentad repeat DNA-binding domain.
<b>Post-translational modifications</b>	Acetylated by CBP/ p300 during cell-growth. Acetylation on Lys-75 is required for stimulation of H4 promoter activity. The major sites of sumoylation are Lys-137 and Lys-293. Sumoylation by SUMO1 increases its transcriptional repressor activity on IRF1 and diminishes its ability to activate ISRE and H4 promoter.
<b>Cellular localization</b>	Nucleus.

---

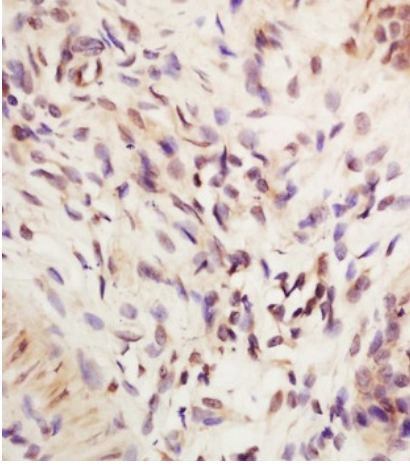
## Images

---



Immunohistochemical analysis of formalin-fixed paraffin-embedded human laryngocarcinoma tissue sections labeling IRF2 with ab217349 at a 1/200 dilution. DAB staining.

Immunohistochemistry (Formalin/PFA-fixed paraffin-embedded sections) - Anti-IRF2 antibody (ab217349)



Immunohistochemical analysis of formalin-fixed paraffin-embedded mouse intestine tissue sections labeling IRF2 with ab217349 at a 1/200 dilution. DAB staining.

Immunohistochemistry (Formalin/PFA-fixed paraffin-embedded sections) - Anti-IRF2 antibody (ab217349)

**Please note:** All products are "FOR RESEARCH USE ONLY. NOT FOR USE IN DIAGNOSTIC PROCEDURES"

### **Our Abpromise to you: Quality guaranteed and expert technical support**

---

- Replacement or refund for products not performing as stated on the datasheet
- Valid for 12 months from date of delivery
- Response to your inquiry within 24 hours
  
- We provide support in Chinese, English, French, German, Japanese and Spanish
- Extensive multi-media technical resources to help you
- We investigate all quality concerns to ensure our products perform to the highest standards

If the product does not perform as described on this datasheet, we will offer a refund or replacement. For full details of the Abpromise, please visit <https://www.abcam.com/abpromise> or contact our technical team.

### **Terms and conditions**

---

- Guarantee only valid for products bought direct from Abcam or one of our authorized distributors