




Product datasheet

Anti-IRF2BP1 antibody [OTI3A6] ab236392

8 Images

Overview

Product name	Anti-IRF2BP1 antibody [OTI3A6]
Description	Mouse monoclonal [OTI3A6] to IRF2BP1
Host species	Mouse
Tested applications	Suitable for: IHC-P, WB
Species reactivity	Reacts with: Human Predicted to work with: Mouse 
Immunogen	Recombinant fragment corresponding to Human IRF2BP1 aa 457-584. Produced in E.coli (NP_056464). Sequence: SSTAQPPTQHRLVARNGEAEVSPTAGAEAVSGGGSG TGATPGAPLCCTLC RERLEDTHFVQCPSVPGHKFCFPCSREFIKAQGPAGE VYCPSGDKCPLVG SSVPWAFMQGEIATILAGDIKVKKERDP Database link: Q8IU81  Run BLAST with  Run BLAST with
Positive control	WB: HEK-293T cell lysates transfected with pCMV6-ENTRY IRF2BP1 cDNA for 48 hrs. IHC-P: Human breast, breast adenocarcinoma, kidney, liver, thyroid, prostate and prostate carcinoma tissues.

Properties

Form	Liquid
Storage instructions	Shipped at 4°C. Store at +4°C short term (1-2 weeks). Upon delivery aliquot. Store at -20°C long term. Avoid freeze / thaw cycle.
Storage buffer	pH: 7.30 Preservative: 0.02% Sodium azide Constituents: PBS, 1% BSA, 50% Glycerol
Purity	Affinity purified
Purification notes	Purified from cell culture supernatant.

Clonality	Monoclonal
Clone number	OTI3A6
Isotype	IgG2b

Applications

Our [Abpromise guarantee](#) covers the use of **ab236392** in the following tested applications.

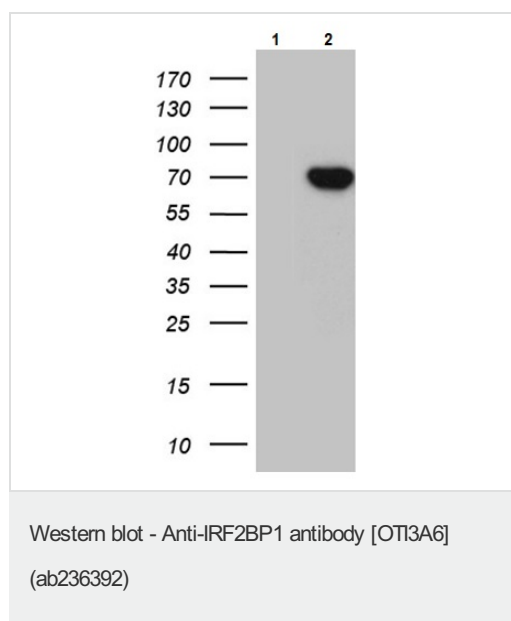
The application notes include recommended starting dilutions; optimal dilutions/concentrations should be determined by the end user.

Application	Abreviews	Notes
IHC-P		1/500. Perform heat mediated antigen retrieval with Tris/EDTA buffer pH 8.5 before commencing with IHC staining protocol.
WB		1/2000. Predicted molecular weight: 62 kDa.

Target

Function	Acts as a transcriptional repressor. Acts as a transcriptional corepressor in a IRF2-dependent manner. This repression is not mediated at least in part by histone deacetylase activities.
Sequence similarities	Belongs to the IRF2BP family.
Domain	The C-terminal RING-type zinc finger domain is necessary for interaction with BAP1.
Cellular localization	Nucleus.

Images



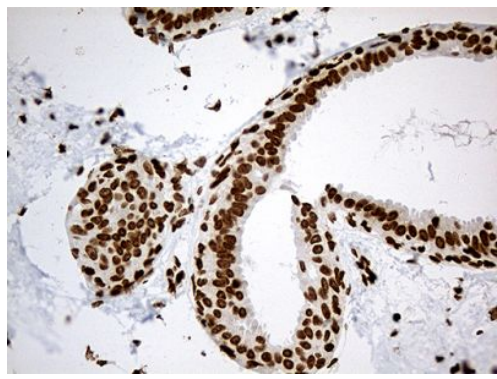
All lanes : Anti-IRF2BP1 antibody [OTI3A6] (ab236392) at 1/2000 dilution

Lane 1 : HEK-293T (human epithelial cell line from embryonic kidney transformed with large T antigen) cell lysates transfected with pCMV6-ENTRY control cDNA for 48 hrs

Lane 2 : HEK-293T cell lysates transfected with pCMV6-ENTRY IRF2BP1 cDNA for 48 hrs

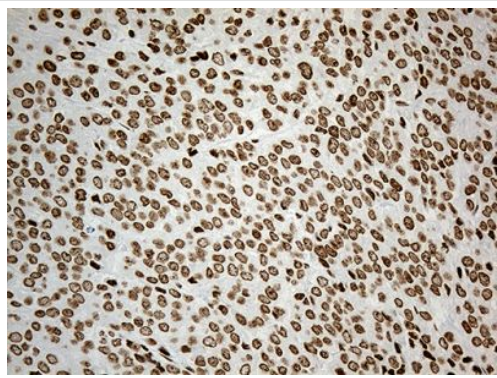
Lysates/proteins at 5 µg per lane.

Predicted band size: 62 kDa



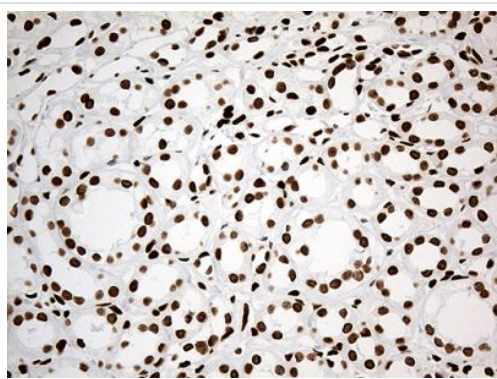
Paraffin-embedded human breast tissue stained for IRF2BP1 using ab236392 at 1/500 dilution in immunohistochemical analysis.

Immunohistochemistry (Formalin/PFA-fixed paraffin-embedded sections) - Anti-IRF2BP1 antibody [OTI3A6] (ab236392)



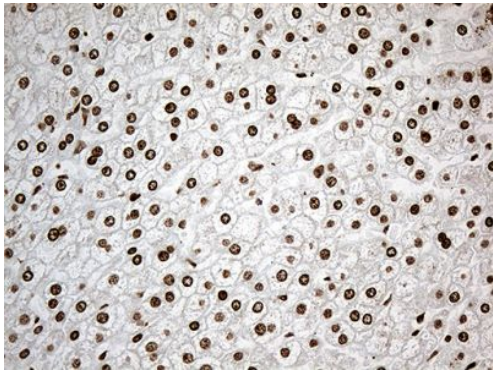
Paraffin-embedded human breast adenocarcinoma tissue stained for IRF2BP1 using ab236392 at 1/500 dilution in immunohistochemical analysis.

Immunohistochemistry (Formalin/PFA-fixed paraffin-embedded sections) - Anti-IRF2BP1 antibody [OTI3A6] (ab236392)



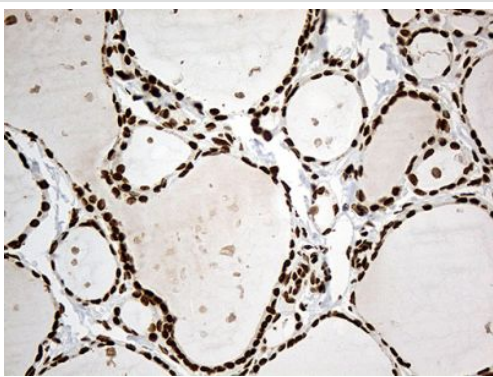
Paraffin-embedded human kidney tissue stained for IRF2BP1 using ab236392 at 1/500 dilution in immunohistochemical analysis.

Immunohistochemistry (Formalin/PFA-fixed paraffin-embedded sections) - Anti-IRF2BP1 antibody [OTI3A6] (ab236392)



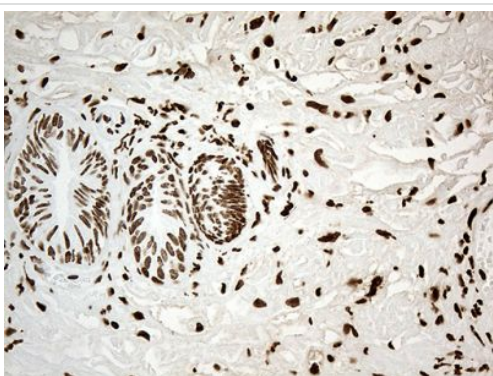
Paraffin-embedded human liver tissue stained for IRF2BP1 using ab236392 at 1/500 dilution in immunohistochemical analysis.

Immunohistochemistry (Formalin/PFA-fixed paraffin-embedded sections) - Anti-IRF2BP1 antibody [OTI3A6] (ab236392)



Paraffin-embedded human thyroid tissue stained for IRF2BP1 using ab236392 at 1/500 dilution in immunohistochemical analysis.

Immunohistochemistry (Formalin/PFA-fixed paraffin-embedded sections) - Anti-IRF2BP1 antibody [OTI3A6] (ab236392)



Paraffin-embedded human prostate tissue stained for IRF2BP1 using ab236392 at 1/500 dilution in immunohistochemical analysis.

Immunohistochemistry (Formalin/PFA-fixed paraffin-embedded sections) - Anti-IRF2BP1 antibody [OTI3A6] (ab236392)



Paraffin-embedded human prostate carcinoma tissue stained for IRF2BP1 using ab236392 at 1/500 dilution in immunohistochemical analysis.

Immunohistochemistry (Formalin/PFA-fixed paraffin-embedded sections) - Anti-IRF2BP1 antibody [OTI3A6] (ab236392)

Please note: All products are "FOR RESEARCH USE ONLY. NOT FOR USE IN DIAGNOSTIC PROCEDURES"

Our Abpromise to you: Quality guaranteed and expert technical support

- Replacement or refund for products not performing as stated on the datasheet
- Valid for 12 months from date of delivery
- Response to your inquiry within 24 hours
- We provide support in Chinese, English, French, German, Japanese and Spanish
- Extensive multi-media technical resources to help you
- We investigate all quality concerns to ensure our products perform to the highest standards

If the product does not perform as described on this datasheet, we will offer a refund or replacement. For full details of the Abpromise, please visit <https://www.abcam.com/abpromise> or contact our technical team.

Terms and conditions

- Guarantee only valid for products bought direct from Abcam or one of our authorized distributors