


Product datasheet

Anti-IRF5 antibody ab2932

★★★★★ 4 Abreviews 14 References 1 Image

Overview

Product name	Anti-IRF5 antibody
Description	Goat polyclonal to IRF5
Host species	Goat
Specificity	This antibody is expected to recognize all four reported isoforms (NP_002191.1; NP_116032.1; NP_001092097.1; NP_001092099.1).
Tested applications	Suitable for: WB
Species reactivity	Reacts with: Human Predicted to work with: Mouse, Rat, Cow 
Immunogen	Synthetic peptide: QGPWPMHPAGMQ, corresponding to C terminal amino acids 493-504 of Human IRF5. Run BLAST with ExPASy Run BLAST with NCBI
Positive control	Purchase matching WB positive control: Recombinant Human IRF5 protein >
General notes	<p>Principal Names – IRF5; interferon regulatory factor 5 Official Gene Symbol - IRF5 GenBank Accession Number – NP_002191; NP_116032 LocusLink ID - 3663 (human) Gene Ontology terms - RNA polymerase III transcription factor; cell growth and/or maintenance</p> <p>The Life Science industry has been in the grips of a reproducibility crisis for a number of years. Abcam is leading the way in addressing this with our range of recombinant monoclonal antibodies and knockout edited cell lines for gold-standard validation. Please check that this product meets your needs before purchasing.</p> <p>If you have any questions, special requirements or concerns, please send us an inquiry and/or contact our Support team ahead of purchase. Recommended alternatives for this product can be found below, along with publications, customer reviews and Q&As</p>

Properties

Form	Liquid
Storage instructions	Shipped at 4°C. Store at +4°C short term (1-2 weeks). Upon delivery aliquot. Store at -20°C long term. Avoid freeze / thaw cycle.
Storage buffer	pH: 7.30

Preservative: 0.02% Sodium azide
Constituents: Tris buffered saline, 0.5% BSA

Purity	Immunogen affinity purified
Purification notes	Purified from goat serum by ammonium sulphate precipitation followed by antigen affinity chromatography using the immunizing peptide.
Clonality	Polyclonal
Isotype	IgG

Applications

The Abpromise guarantee Our [Abpromise guarantee](#) covers the use of ab2932 in the following tested applications. The application notes include recommended starting dilutions; optimal dilutions/concentrations should be determined by the end user.

Application	Abreviews	Notes
WB	★★★★★ (4)	Use a concentration of 0.1 - 0.3 µg/ml. Detects a band of approximately 55,60,65 kDa (predicted molecular weight: 58 kDa). 1 hour primary incubation is recommended for this product.

Target

Involvement in disease

Genetic variations in IRF5 are associated with susceptibility to inflammatory bowel disease type 14 (IBD14) [MIM:612245]. IBD14 is a chronic, relapsing inflammation of the gastrointestinal tract with a complex etiology. It is subdivided into Crohn disease and ulcerative colitis phenotypes. Crohn disease may affect any part of the gastrointestinal tract from the mouth to the anus, but most frequently it involves the terminal ileum and colon. Bowel inflammation is transmural and discontinuous; it may contain granulomas or be associated with intestinal or perianal fistulas. In contrast, in ulcerative colitis, the inflammation is continuous and limited to rectal and colonic mucosal layers; fistulas and granulomas are not observed. Both diseases include extraintestinal inflammation of the skin, eyes, or joints.

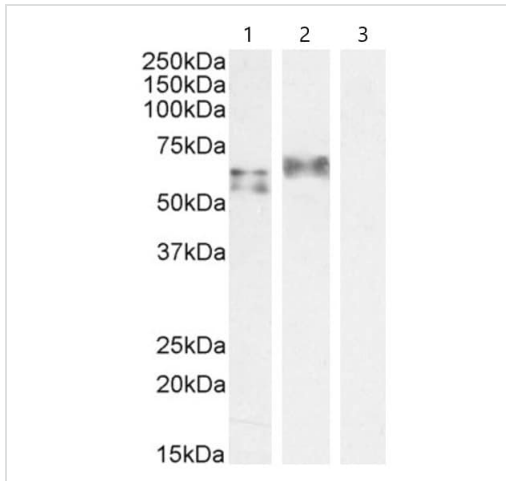
Genetic variations in IRF5 are associated with susceptibility to systemic lupus erythematosus type 10 (SLEB10) [MIM:612251]. Systemic lupus erythematosus (SLE) is a chronic, inflammatory and often febrile multisystemic disorder of connective tissue. It affects principally the skin, joints, kidneys and serosal membranes. It is thought to represent a failure of the regulatory mechanisms of the autoimmune system.

Genetic variations in IRF5 are a cause of susceptibility to rheumatoid arthritis (RA) [MIM:180300]. It is a systemic inflammatory disease with autoimmune features and a complex genetic component. It primarily affects the joints and is characterized by inflammatory changes in the synovial membranes and articular structures, widespread fibrinoid degeneration of the collagen fibers in mesenchymal tissues, and by atrophy and rarefaction of bony structures.

Sequence similarities Belongs to the IRF family.
Contains 1 IRF tryptophan pentad repeat DNA-binding domain.

Cellular localization Nucleus.

Images



Western blot - Anti-IRF5 antibody (ab2932)

All lanes : Anti-IRF5 antibody (ab2932) at 1 µg/ml

Lane 1 : Human Spleen (in RIPA buffer)

Lane 2 : A549 cell lysate (in RIPA buffer)

Lane 3 : A549 cell lysate (in RIPA buffer) with peptide

Lysates/proteins at 35 µg per lane.

Predicted band size: 58 kDa

Observed band size: 55,60,65 kDa

Primary incubation 1 hour at room temperature. Detected by chemiluminescence.

Please note: All products are "FOR RESEARCH USE ONLY. NOT FOR USE IN DIAGNOSTIC PROCEDURES"

Our Abpromise to you: Quality guaranteed and expert technical support

- Replacement or refund for products not performing as stated on the datasheet
- Valid for 12 months from date of delivery
- Response to your inquiry within 24 hours
- We provide support in Chinese, English, French, German, Japanese and Spanish
- Extensive multi-media technical resources to help you
- We investigate all quality concerns to ensure our products perform to the highest standards

If the product does not perform as described on this datasheet, we will offer a refund or replacement. For full details of the Abpromise, please visit <https://www.abcam.com/abpromise> or contact our technical team.

Terms and conditions

- Guarantee only valid for products bought direct from Abcam or one of our authorized distributors