

## Product datasheet

# Anti-IRF8 antibody ab168808

1 Image

### Overview

<b>Product name</b>	Anti-IRF8 antibody
<b>Description</b>	Rabbit polyclonal to IRF8
<b>Host species</b>	Rabbit
<b>Tested applications</b>	<b>Suitable for:</b> IP
<b>Species reactivity</b>	<p><b>Reacts with:</b> Mouse</p> <p><b>Predicted to work with:</b> Rat, Rabbit, Chicken, Guinea pig, Cow, Dog, Turkey, Human, Pig, Chimpanzee, Duck, Lizard, Rhesus monkey, Gorilla, Chinese hamster, Orangutan </p>
<b>Immunogen</b>	<p>Synthetic peptide, corresponding to a region within amino acids 1-50 of Mouse IRF8 (NP_032346.1).</p> <p> <a href="#">Run BLAST with ExPASy</a> <a href="#">Run BLAST with NCBI</a></p>
<b>Positive control</b>	RAW 264.7 whole cell lysate.
<b>General notes</b>	<p>Reproducibility is key to advancing scientific discovery and accelerating scientists' next breakthrough.</p> <p>Abcam is leading the way with our range of recombinant antibodies, knockout-validated antibodies and knockout cell lines, all of which support improved reproducibility.</p> <p>We are also planning to innovate the way in which we present recommended applications and species on our product datasheets, so that only applications &amp; species that have been tested in our own labs, our suppliers or by selected trusted collaborators are covered by our Abpromise™ guarantee.</p> <p>In preparation for this, we have started to update the applications &amp; species that this product is Abpromise guaranteed for.</p> <p>We are also updating the applications &amp; species that this product has been “predicted to work with,” however this information is not covered by our Abpromise guarantee.</p> <p>Applications &amp; species from publications and Abreviews that have not been tested in our own labs or in those of our suppliers are not covered by the Abpromise guarantee.</p> <p>Please check that this product meets your needs before purchasing. If you have any questions, special requirements or concerns, please send us an inquiry and/or contact our Support team ahead of purchase. Recommended alternatives for this product can be found below, as well as customer reviews and Q&amp;As.</p>

### Properties

<b>Form</b>	Liquid
<b>Storage instructions</b>	Shipped at 4°C. Store at +4°C short term (1-2 weeks). Upon delivery aliquot. Store at -20°C long term.
<b>Storage buffer</b>	pH: 7 Preservative: 0.09% Sodium azide Constituent: 99% Tris citrate/phosphate
<b>Purity</b>	pH 7 to 8 Immunogen affinity purified
<b>Purification notes</b>	ab168808 was affinity purified using an epitope specific to IRF8 immobilized on solid support.
<b>Clonality</b>	Polyclonal
<b>Isotype</b>	IgG

## Applications

Our [Abpromise guarantee](#) covers the use of **ab168808** in the following tested applications.

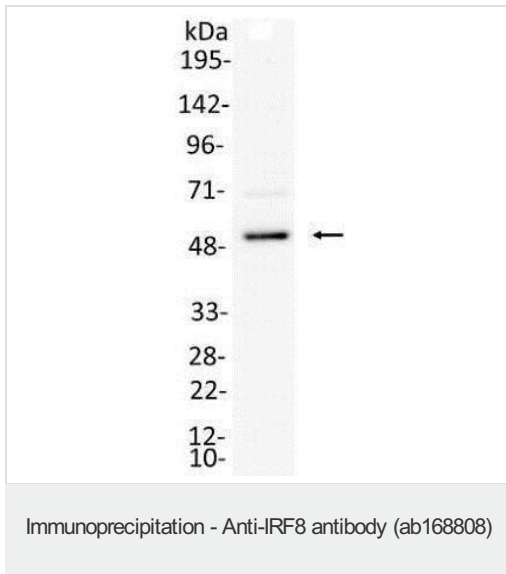
The application notes include recommended starting dilutions; optimal dilutions/concentrations should be determined by the end user.

Application	Abreviews	Notes
IP		Use at 2-10 µg/mg of lysate.

## Target

<b>Function</b>	Specifically binds to the upstream regulatory region of type I IFN and IFN-inducible MHC class I genes (the interferon consensus sequence (ICS)). Plays a negative regulatory role in cells of the immune system.
<b>Tissue specificity</b>	Predominantly in lymphoid tissues.
<b>Sequence similarities</b>	Belongs to the IRF family. Contains 1 IRF tryptophan pentad repeat DNA-binding domain.
<b>Post-translational modifications</b>	Ubiquitinated. Ubiquitination by TRIM21 in macrophages, a process that is strongly increased upon interferon gamma stimulation, leads to the enhanced transcriptional activity of target cytokine genes.
<b>Cellular localization</b>	Nucleus.

## Images



Detection of IRF8 in Immunoprecipitates of RAW 264.7 whole cell lysate (0.5 mg for IP, 20% of IP loaded) using ab168808 at 6 µg/mg lysate for IP. For WB detection an alternative anti-IRF8 antibody was used at 1 µg/ml.

Detection: Chemiluminescence with an exposure time of 30 seconds.

Predicted MWt: 48 kDa.

**Please note:** All products are "FOR RESEARCH USE ONLY. NOT FOR USE IN DIAGNOSTIC PROCEDURES"

### Our Abpromise to you: Quality guaranteed and expert technical support

---

- Replacement or refund for products not performing as stated on the datasheet
- Valid for 12 months from date of delivery
- Response to your inquiry within 24 hours
- We provide support in Chinese, English, French, German, Japanese and Spanish
- Extensive multi-media technical resources to help you
- We investigate all quality concerns to ensure our products perform to the highest standards

If the product does not perform as described on this datasheet, we will offer a refund or replacement. For full details of the Abpromise, please visit <https://www.abcam.com/abpromise> or contact our technical team.

### Terms and conditions

---

- Guarantee only valid for products bought direct from Abcam or one of our authorized distributors