

Product datasheet

Anti-IRX2 antibody ab72975

2 References 2 Images

Overview

---

<b>Product name</b>	Anti-IRX2 antibody
<b>Description</b>	Mouse polyclonal to IRX2
<b>Host species</b>	Mouse
<b>Tested applications</b>	<b>Suitable for:</b> WB, ICC/IF
<b>Species reactivity</b>	<b>Reacts with:</b> Human
<b>Immunogen</b>	Recombinant full length protein within Human IRX2. The exact immunogen sequence used to generate this antibody is proprietary information. If additional detail on the immunogen is needed to determine the suitability of the antibody for your needs, please <a href="#">contact</a> our Scientific Support team to discuss your requirements.
<b>Positive control</b>	Hela cells and IRX2 transfected 293T cell lysate
<b>General notes</b>	<p>The Life Science industry has been in the grips of a reproducibility crisis for a number of years. Abcam is leading the way in addressing this with our range of recombinant monoclonal antibodies and knockout edited cell lines for gold-standard validation. Please check that this product meets your needs before purchasing.</p> <p>If you have any questions, special requirements or concerns, please send us an inquiry and/or contact our Support team ahead of purchase. Recommended alternatives for this product can be found below, along with publications, customer reviews and Q&amp;As</p>

Properties

---

<b>Form</b>	Liquid
<b>Storage instructions</b>	Shipped at 4°C. Upon delivery aliquot and store at -20°C or -80°C. Avoid repeated freeze / thaw cycles.
<b>Storage buffer</b>	pH: 7.4 Constituent: 2.68% PBS
<b>Purity</b>	Protein A purified
<b>Clonality</b>	Polyclonal
<b>Isotype</b>	IgG

Applications

---

## The Abpromise guarantee

Our [Abpromise guarantee](#) covers the use of ab72975 in the following tested applications.

The application notes include recommended starting dilutions; optimal dilutions/concentrations should be determined by the end user.

Application	Abreviews	Notes
WB		
ICC/IF		

### Application notes

ICC/IF: Use at a concentration of 10 µg/ml.  
Protein A purify ab72975 before starting ICC/IF procedure.  
WB: 1/500 - 1/1000. Predicted molecular weight: 52 kDa.

Not yet tested in other applications.  
Optimal dilutions/concentrations should be determined by the end user.

## Target

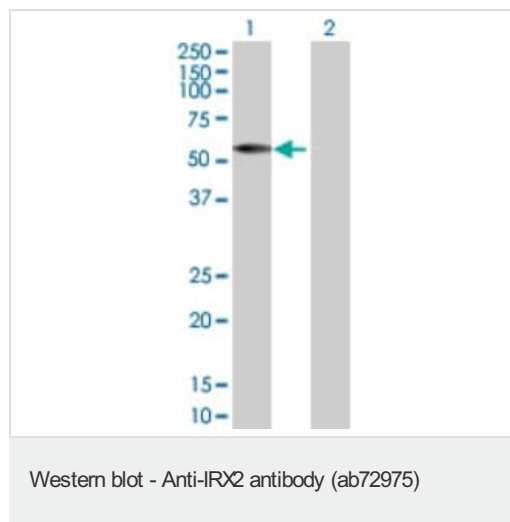
### Sequence similarities

Belongs to the TALE/IRO homeobox family.  
Contains 1 homeobox DNA-binding domain.

### Cellular localization

Nucleus.

## Images



**All lanes** : Anti-IRX2 antibody (ab72975) at 1/500 dilution

**Lane 1** : IRX2 transfected 293T cell lysate

**Lane 2** : Non-transfected 293T cell lysate

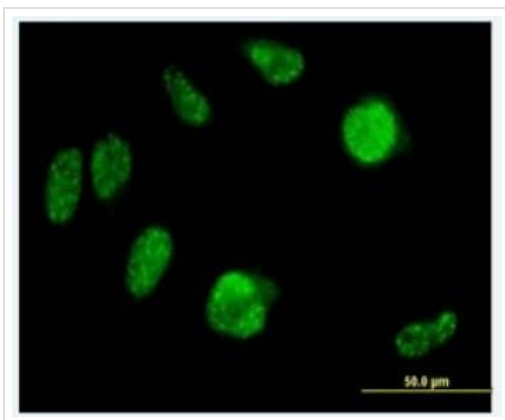
Lysates/proteins at 25 µg per lane.

### Secondary

**All lanes** : Goat Anti-Mouse IgG (H&L)-HRP Conjugate at 1/2500 dilution

**Predicted band size:** 52 kDa

**Observed band size:** 52 kDa



HeLa cells with Protein A purified ab72975 at 10ug/ml.

Immunocytochemistry/ Immunofluorescence - Anti-IRX2 antibody (ab72975)

**Please note:** All products are "FOR RESEARCH USE ONLY. NOT FOR USE IN DIAGNOSTIC PROCEDURES"

### Our Abpromise to you: Quality guaranteed and expert technical support

---

- Replacement or refund for products not performing as stated on the datasheet
- Valid for 12 months from date of delivery
- Response to your inquiry within 24 hours
- We provide support in Chinese, English, French, German, Japanese and Spanish
- Extensive multi-media technical resources to help you
- We investigate all quality concerns to ensure our products perform to the highest standards

If the product does not perform as described on this datasheet, we will offer a refund or replacement. For full details of the Abpromise, please visit <https://www.abcam.com/abpromise> or contact our technical team.

### Terms and conditions

---

- Guarantee only valid for products bought direct from Abcam or one of our authorized distributors