

Product datasheet

Anti-ISG20 antibody [EPR8973] ab157477

Recombinant RabMAb

3 Images

Overview

Product name	Anti-ISG20 antibody [EPR8973]
Description	Rabbit monoclonal [EPR8973] to ISG20
Host species	Rabbit
Tested applications	Suitable for: WB, IHC-P Unsuitable for: Flow Cyt, ICC or IP
Species reactivity	Reacts with: Human
Immunogen	Synthetic peptide corresponding to residues in Human ISG20 (UniProt Q96AZ6).
Positive control	Daudi cell lysate; Human colon and tonsil tissues.
General notes	<p>Mouse, Rat: We have preliminary internal testing data to indicate this antibody may not react with these species. Please contact us for more information.</p> <p>Our RabMAb[®] technology is a patented hybridoma-based technology for making rabbit monoclonal antibodies. For details on our patents, please refer to RabMAb[®] patents.</p> <p>This product is a recombinant rabbit monoclonal antibody.</p>

Properties

Form	Liquid
Storage instructions	Shipped at 4°C. Store at -20°C.
Storage buffer	Preservative: 0.01% Sodium azide Constituents: 9% PBS, 40% Glycerol, 0.05% BSA, 50% Tissue culture supernatant
Purity	Tissue culture supernatant
Clonality	Monoclonal
Clone number	EPR8973
Isotype	IgG

Applications

Our [Abpromise guarantee](#) covers the use of **ab157477** in the following tested applications.

The application notes include recommended starting dilutions; optimal dilutions/concentrations should be determined by the end user.

Application	Abreviews	Notes
-------------	-----------	-------

WB 1/1000 - 1/5000. Predicted molecular weight: 20 kDa.

IHC-P 1/50 - 1/100.

Application notes Is unsuitable for Flow Cyt, ICC or IP.

Target

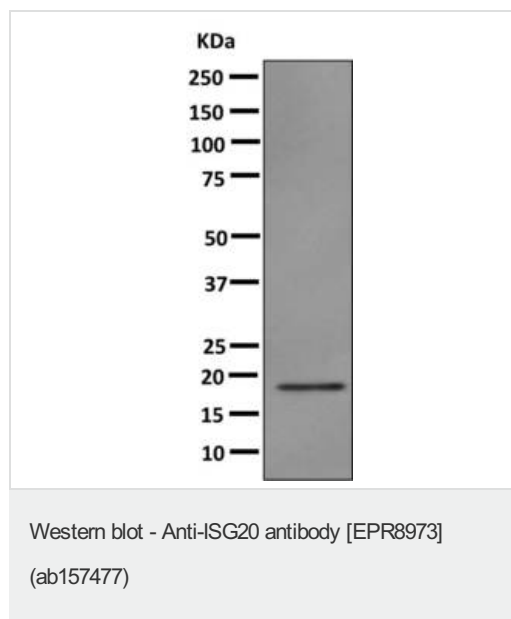
Function Exonuclease with specificity for single-stranded RNA and, to a lesser extent for DNA. Degrades RNA at a rate that is approximately 35-fold higher than its rate for single-stranded DNA. Involved in the antiviral function of IFN against RNA viruses.

Tissue specificity Highly expressed in peripheral blood leukocytes, spleen, thymus, colon and lung.

Sequence similarities Belongs to the exonuclease superfamily.

Cellular localization Nucleus.

Images

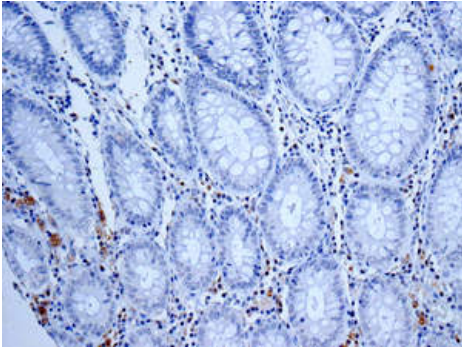


Anti-ISG20 antibody [EPR8973] (ab157477) at 1/1000 dilution +
Daudi cell lysate at 10 µg

Secondary

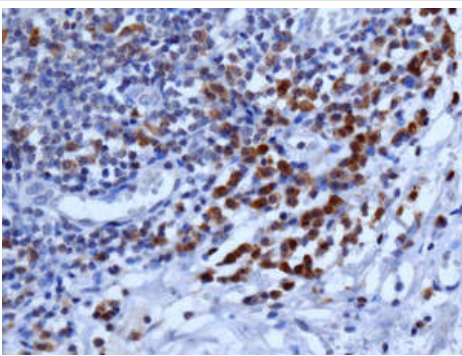
HRP labelled goat anti-rabbit at 1/2000 dilution

Predicted band size: 20 kDa



Immunohistochemical analysis of paraffin-embedded Human colon tissue labeling ISG20 with ab157477 at 1/50 dilution.

Immunohistochemistry (Formalin/PFA-fixed paraffin-embedded sections) - Anti-ISG20 antibody [EPR8973] (ab157477)



Immunohistochemical analysis of paraffin-embedded Human tonsil tissue labeling ISG20 with ab157477 at 1/50 dilution.

Immunohistochemistry (Formalin/PFA-fixed paraffin-embedded sections) - Anti-ISG20 antibody [EPR8973] (ab157477)

Please note: All products are "FOR RESEARCH USE ONLY AND ARE NOT INTENDED FOR DIAGNOSTIC OR THERAPEUTIC USE"

Our Abpromise to you: Quality guaranteed and expert technical support

- Replacement or refund for products not performing as stated on the datasheet
- Valid for 12 months from date of delivery
- Response to your inquiry within 24 hours
- We provide support in Chinese, English, French, German, Japanese and Spanish
- Extensive multi-media technical resources to help you
- We investigate all quality concerns to ensure our products perform to the highest standards

If the product does not perform as described on this datasheet, we will offer a refund or replacement. For full details of the Abpromise, please visit <https://www.abcam.com/abpromise> or contact our technical team.

Terms and conditions

- Guarantee only valid for products bought direct from Abcam or one of our authorized distributors