

Product datasheet

Anti-Isoleucyl tRNA synthetase antibody ab31533

[2 Images](#)

Overview

Product name	Anti-Isoleucyl tRNA synthetase antibody
Description	Rabbit polyclonal to Isoleucyl tRNA synthetase
Host species	Rabbit
Specificity	This antibody reacts specifically with Isoleucyl tRNA synthetase protein.
Tested applications	Suitable for: WB, ICC/IF
Species reactivity	Reacts with: Human
Immunogen	S1074-F1264 denatured recombinant human IRS.
General notes	<p>The Life Science industry has been in the grips of a reproducibility crisis for a number of years. Abcam is leading the way in addressing this with our range of recombinant monoclonal antibodies and knockout edited cell lines for gold-standard validation. Please check that this product meets your needs before purchasing.</p> <p>If you have any questions, special requirements or concerns, please send us an inquiry and/or contact our Support team ahead of purchase. Recommended alternatives for this product can be found below, along with publications, customer reviews and Q&As</p>

Properties

Form	Liquid
Storage instructions	Shipped at 4°C. Store at +4°C short term (1-2 weeks). Upon delivery aliquot. Store at -20°C long term.
Storage buffer	Preservative: 0.05% Sodium azide
Purity	Whole antiserum
Clonality	Polyclonal
Isotype	IgG

Applications

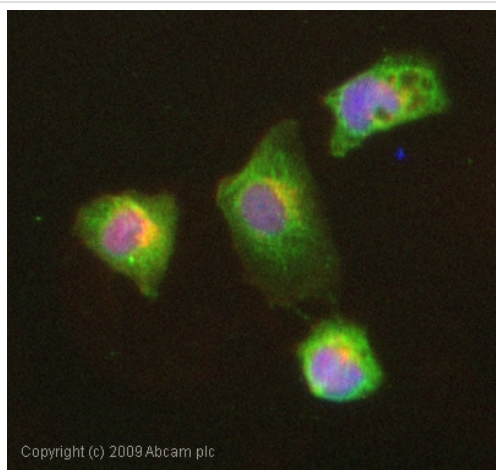
The Abpromise guarantee Our [Abpromise guarantee](#) covers the use of ab31533 in the following tested applications. The application notes include recommended starting dilutions; optimal dilutions/concentrations should be determined by the end user.

Application	Abreviews	Notes
WB		1/2000. Predicted molecular weight: 145 kDa.
ICC/IF		1/1000.

Target

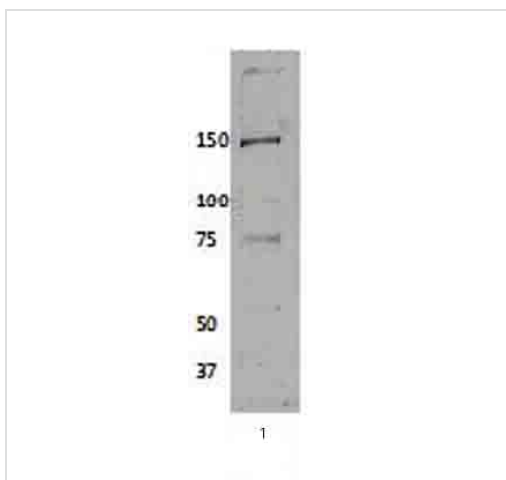
Relevance	Isoleucyl tRNA synthetase is a component of multi ARS complex and catalyzes the ligation of isoleucine with isoleucyl tRNA.
Cellular localization	Cytoplasmic

Images



Immunocytochemistry/ Immunofluorescence - Anti-Isoleucyl tRNA synthetase antibody (ab31533)

ICC/IF image of ab31533 stained MCF7 cells. The cells were 4% PFA fixed (10 min) and then incubated in 1%BSA / 10% normal goat serum / 0.3M glycine in 0.1% PBS-Tween for 1h to permeabilise the cells and block non-specific protein-protein interactions. The cells were then incubated with the antibody (ab31533, 1/1000 dilution) overnight at +4°C. The secondary antibody (green) was Alexa Fluor® 488 goat anti-rabbit IgG (H+L) used at a 1/1000 dilution for 1h. Alexa Fluor® 594 WGA was used to label plasma membranes (red) at a 1/200 dilution for 1h. DAPI was used to stain the cell nuclei (blue) at a concentration of 1.43µM.



Western blot - Anti-Isoleucyl tRNA synthetase antibody (ab31533)

Anti-Isoleucyl tRNA synthetase antibody (ab31533) at 1/2000 dilution + whole cell lysate prepared from HEK293 cells at 50 µg/ml

Secondary

Goat anti-rabbit IgG (H+L) at 1/10000 dilution

Predicted band size: 145 kDa

Observed band size: 150 kDa

Please note: All products are "FOR RESEARCH USE ONLY. NOT FOR USE IN DIAGNOSTIC PROCEDURES"

Our Abpromise to you: Quality guaranteed and expert technical support

- Replacement or refund for products not performing as stated on the datasheet
- Valid for 12 months from date of delivery
- Response to your inquiry within 24 hours

- We provide support in Chinese, English, French, German, Japanese and Spanish
- Extensive multi-media technical resources to help you
- We investigate all quality concerns to ensure our products perform to the highest standards

If the product does not perform as described on this datasheet, we will offer a refund or replacement. For full details of the Abpromise, please visit <https://www.abcam.com/abpromise> or contact our technical team.

Terms and conditions

- Guarantee only valid for products bought direct from Abcam or one of our authorized distributors