


Product datasheet

Anti-ITPR3 antibody ab113292

1 References 2 Images

Overview

Product name	Anti-ITPR3 antibody
Description	Rabbit polyclonal to ITPR3
Host species	Rabbit
Tested applications	Suitable for: IHC-P
Species reactivity	Reacts with: Human Predicted to work with: Guinea pig, Gorilla, Orangutan 
Immunogen	Synthetic peptide corresponding to a region within amino acids 625-675 of Human ITPR3 (NP_002215.2).
Positive control	Human Breast Carcinoma, Colon Carcinoma, Osteosarcoma, Ovarian Carcinoma, and Stomach Adenocarcinoma tissues
General notes	<p>Reproducibility is key to advancing scientific discovery and accelerating scientists' next breakthrough.</p> <p>Abcam is leading the way with our range of recombinant antibodies, knockout-validated antibodies and knockout cell lines, all of which support improved reproducibility.</p> <p>We are also planning to innovate the way in which we present recommended applications and species on our product datasheets, so that only applications & species that have been tested in our own labs, our suppliers or by selected trusted collaborators are covered by our Abpromise™ guarantee.</p> <p>In preparation for this, we have started to update the applications & species that this product is Abpromise guaranteed for.</p> <p>We are also updating the applications & species that this product has been “predicted to work with,” however this information is not covered by our Abpromise guarantee.</p> <p>Applications & species from publications and Abreviews that have not been tested in our own labs or in those of our suppliers are not covered by the Abpromise guarantee.</p> <p>Please check that this product meets your needs before purchasing. If you have any questions, special requirements or concerns, please send us an inquiry and/or contact our Support team ahead of purchase. Recommended alternatives for this product can be found below, as well as customer reviews and Q&As.</p>

Properties

Form	Liquid
Storage instructions	Shipped at 4°C. Upon delivery aliquot and store at -20°C. Avoid freeze / thaw cycles.
Storage buffer	pH: 6.8 Preservative: 0.09% Sodium azide Constituents: 99% Tris buffered saline, 0.1% BSA
Purity	Immunogen affinity purified
Clonality	Polyclonal
Isotype	IgG

Applications

Our [Abpromise guarantee](#) covers the use of **ab113292** in the following tested applications.

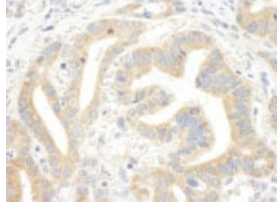
The application notes include recommended starting dilutions; optimal dilutions/concentrations should be determined by the end user.

Application	Abreviews	Notes
IHC-P		1/100 - 1/500. Epitope exposure is recommended. Epitope exposure with citrate buffer will enhance staining.

Target

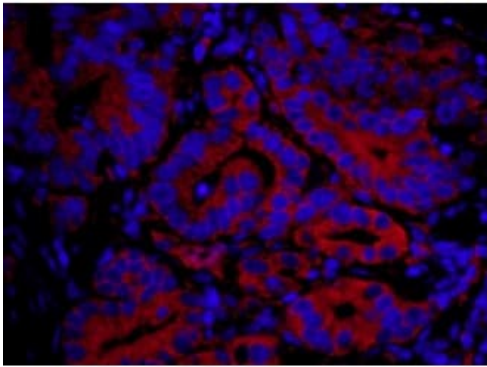
Function	Receptor for inositol 1,4,5-trisphosphate, a second messenger that mediates the release of intracellular calcium.
Tissue specificity	Expressed in intestinal crypt and villus epithelial cells.
Sequence similarities	Belongs to the InsP3 receptor family. Contains 5 MIR domains.
Domain	The receptor contains a calcium channel in its C-terminal extremity. Its large N-terminal cytoplasmic region has the ligand-binding site in the N-terminus and modulatory sites in the middle portion immediately upstream of the channel region.
Post-translational modifications	Phosphorylated on tyrosine residues. Phosphorylated by AKT1 on serine and/or threonine residues.
Cellular localization	Endoplasmic reticulum membrane.

Images



Immunohistochemistry (Formalin/PFA-fixed paraffin-embedded sections) - Anti-ITPR3 antibody (ab113292)

ab113292, at 1/250 dilution, staining ITPR3 in formalin-fixed, paraffin-embedded Human stomach carcinoma by Immunohistochemistry with DAB staining.



Immunohistochemistry (Formalin/PFA-fixed paraffin-embedded sections) - Anti-ITPR3 antibody (ab113292)

ab113292, at 1/250 dilution, staining ITPR3 in formalin-fixed, paraffin-embedded Human stomach carcinoma by Immunohistochemistry. Detection: Red-fluorescent Goat anti-Rabbit IgG-heavy and light chain cross-adsorbed Antibody DyLight® 594 Conjugated used at a dilution of 1/100.

Please note: All products are "FOR RESEARCH USE ONLY. NOT FOR USE IN DIAGNOSTIC PROCEDURES"

Our Abpromise to you: Quality guaranteed and expert technical support

- Replacement or refund for products not performing as stated on the datasheet
- Valid for 12 months from date of delivery
- Response to your inquiry within 24 hours
- We provide support in Chinese, English, French, German, Japanese and Spanish
- Extensive multi-media technical resources to help you
- We investigate all quality concerns to ensure our products perform to the highest standards

If the product does not perform as described on this datasheet, we will offer a refund or replacement. For full details of the Abpromise, please visit <https://www.abcam.com/abpromise> or contact our technical team.

Terms and conditions

- Guarantee only valid for products bought direct from Abcam or one of our authorized distributors