

Product datasheet

Anti-IWS1 antibody ab230183

3 Images

Overview

Product name	Anti-IWS1 antibody
Description	Rabbit polyclonal to IWS1
Host species	Rabbit
Tested applications	Suitable for: WB, IHC-P
Species reactivity	Reacts with: Human Predicted to work with: Mouse, Xenopus tropicalis ▲
Immunogen	Recombinant fragment corresponding to Human IWS1 aa 570-819. Sequence: AAEEDRQLNNQKKPALKKLTLPAVVMHLKKQDLKET FIDSGVMSAIKEW LSPLPDRSLPALKIREELLKILQELPSVSVQETLKHSGIG RAVMYLYKHPK ESRSNKDMAGKLINEWSRPIFGLTSNYKGMTREEREQ RDLEQMPQRRRMN STGGQTPRRDLEKVLGTGEEKALRPGDPGFCARARVP MPSNKDYVVRPKWN VEMESSRFQATSKKGISRLDKQMRKFTDIRKKSRSAH AVKISIEGNKMPL Database link: Q96ST2 Run BLAST with Run BLAST with
Positive control	WB: HeLa, HEK-293T and Jurkat whole cell lysates. IHC-P: Human liver and liver cancer tissues.

Properties

Form	Liquid
Storage instructions	Shipped at 4°C. Store at +4°C short term (1-2 weeks). Upon delivery aliquot. Store at -20°C long term. Avoid freeze / thaw cycle.
Storage buffer	pH: 7.30 Preservative: 0.02% Sodium azide Constituents: PBS, 50% Glycerol
Purity	Immunogen affinity purified

Clonality	Polyclonal
Isotype	IgG

Applications

Our [Abpromise guarantee](#) covers the use of **ab230183** in the following tested applications.

The application notes include recommended starting dilutions; optimal dilutions/concentrations should be determined by the end user.

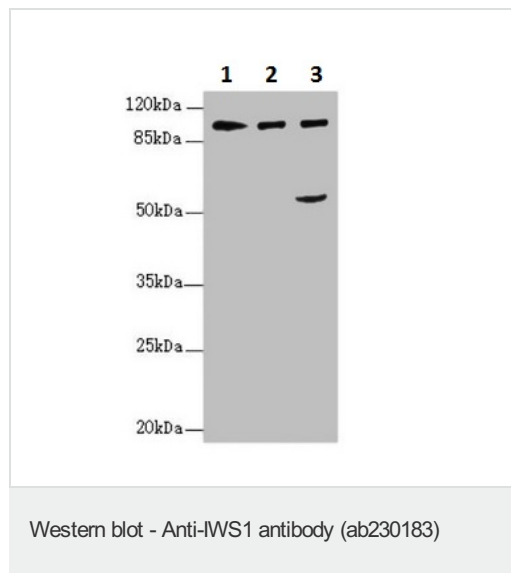
Application	Abreviews	Notes
WB		1/1000 - 1/5000. Predicted molecular weight: 92 kDa.
IHC-P		1/20 - 1/200.

Target

Sequence similarities Belongs to the IWS1 family.
Contains 1 TFIIS N-terminal domain.

Cellular localization Nucleus.

Images



All lanes : Anti-IWS1 antibody (ab230183) at 1/1000 dilution

Lane 1 : HeLa (human epithelial cell line from cervix adenocarcinoma) whole cell lysate

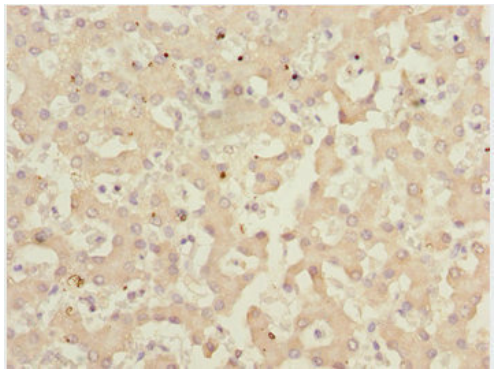
Lane 2 : HEK-293T (human epithelial cell line from embryonic kidney transformed with large T antigen) whole cell lysate

Lane 3 : Jurkat (human T cell leukemia cell line from peripheral blood) whole cell lysate

Secondary

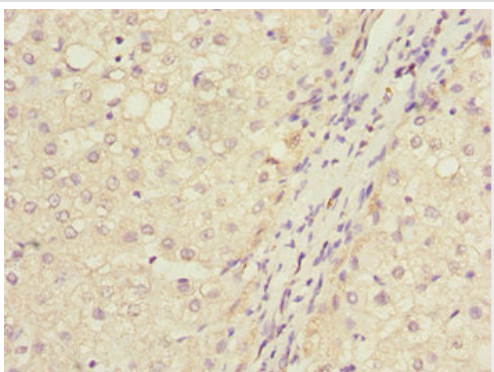
All lanes : Goat anti-Rabbit IgG at 1/10000 dilution

Predicted band size: 92 kDa



Immunohistochemistry (Formalin/PFA-fixed paraffin-embedded sections) - Anti-IWS1 antibody (ab230183)

Paraffin-embedded liver tissue stained for IWS1 using ab230183 at 1/100 dilution in immunohistochemical analysis.



Immunohistochemistry (Formalin/PFA-fixed paraffin-embedded sections) - Anti-IWS1 antibody (ab230183)

Paraffin-embedded liver cancer tissue stained for IWS1 using ab230183 at 1/100 dilution in immunohistochemical analysis.

Please note: All products are "FOR RESEARCH USE ONLY. NOT FOR USE IN DIAGNOSTIC PROCEDURES"

Our Abpromise to you: Quality guaranteed and expert technical support

- Replacement or refund for products not performing as stated on the datasheet
- Valid for 12 months from date of delivery
- Response to your inquiry within 24 hours
- We provide support in Chinese, English, French, German, Japanese and Spanish
- Extensive multi-media technical resources to help you

- We investigate all quality concerns to ensure our products perform to the highest standards

If the product does not perform as described on this datasheet, we will offer a refund or replacement. For full details of the Abpromise, please visit <https://www.abcam.com/abpromise> or contact our technical team.

Terms and conditions

- Guarantee only valid for products bought direct from Abcam or one of our authorized distributors