


Product datasheet

Anti-Jagged 2/JAG2 antibody [EPR3646] ab109627

Recombinant **RabMAb**

[4 References](#) [1 Image](#)

Overview

Product name	Anti-Jagged 2/JAG2 antibody [EPR3646]
Description	Rabbit monoclonal [EPR3646] to Jagged 2/JAG2
Host species	Rabbit
Tested applications	Suitable for: ICC/IF, WB Unsuitable for: Flow Cyt, ICC, IHC-P or IP
Species reactivity	Reacts with: Mouse, Human Predicted to work with: Rat 
Immunogen	Synthetic peptide within Human Jagged 2/JAG2 aa 50-150 (extracellular). The exact sequence is proprietary.
Positive control	HeLa, HUVEC and HT-29 cell lysates
General notes	

This product was previously labelled as Jagged 2

Our RabMAb[®] technology is a patented hybridoma-based technology for making rabbit monoclonal antibodies. For details on our patents, please refer to [RabMAb[®] patents](#).

This product is a [recombinant rabbit monoclonal antibody](#).

Properties

Form	Liquid
Storage instructions	Shipped at 4°C. Store at -20°C. Stable for 12 months at -20°C.
Storage buffer	pH: 7.20 Preservative: 0.01% Sodium azide Constituents: 9% PBS, 40% Glycerol, 0.05% BSA, 50% Tissue culture supernatant
Purity	Tissue culture supernatant
Clonality	Monoclonal
Clone number	EPR3646

Isotype

IgG

Applications

Our [Abpromise guarantee](#) covers the use of **ab109627** in the following tested applications.

The application notes include recommended starting dilutions; optimal dilutions/concentrations should be determined by the end user.

Application	Abreviews	Notes
ICC/IF		Use at an assay dependent concentration. PubMed: 24901044
WB		1/1000 - 1/10000. Predicted molecular weight: 133 kDa.

Application notes

Is unsuitable for Flow Cyt, ICC, IHC-P or IP.

Target

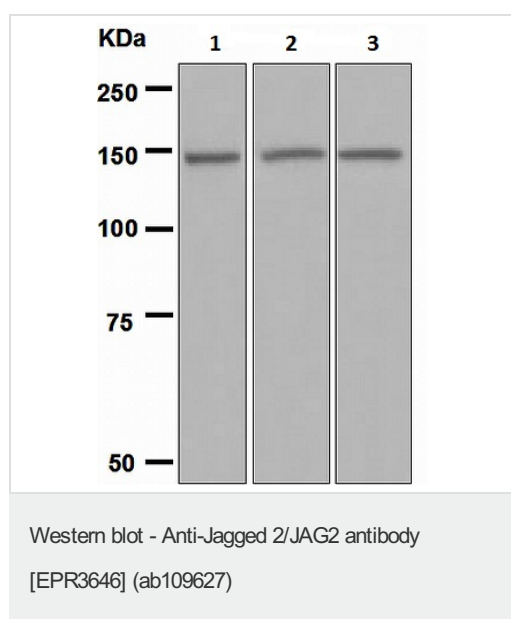
Relevance

Jagged 2 is a Notch ligand involved in the mediation of Notch signaling. Jagged 2 is expressed in heart, placenta and skeletal muscle and to a lesser extent in pancreas. Very low expression in brain, lung, liver and kidney. The Notch signaling pathway is an intercellular signaling mechanism that is essential for proper embryonic development. Members of the Notch gene family encode transmembrane receptors that are critical for various cell fate decisions. Jagged 2 is one of several ligands that activate Notch and related receptors. Two transcript variants encoding different isoforms have been found for Jagged 2.

Cellular localization

Cell Membrane

Images



All lanes : Anti-Jagged 2/JAG2 antibody [EPR3646] (ab109627) at 1/1000 dilution

Lane 1 : HeLa cell lysate

Lane 2 : HUVEC cell lysate

Lane 3 : HT-29 cell lysate

Lysates/proteins at 10 µg per lane.

Secondary

All lanes : HRP labelled Goat anti-Rabbit at 1/2000 dilution

Predicted band size: 133 kDa

Please note: All products are "FOR RESEARCH USE ONLY. NOT FOR USE IN DIAGNOSTIC PROCEDURES"

Our Abpromise to you: Quality guaranteed and expert technical support

- Replacement or refund for products not performing as stated on the datasheet
- Valid for 12 months from date of delivery
- Response to your inquiry within 24 hours

- We provide support in Chinese, English, French, German, Japanese and Spanish
- Extensive multi-media technical resources to help you
- We investigate all quality concerns to ensure our products perform to the highest standards

If the product does not perform as described on this datasheet, we will offer a refund or replacement. For full details of the Abpromise, please visit <https://www.abcam.com/abpromise> or contact our technical team.

Terms and conditions

- Guarantee only valid for products bought direct from Abcam or one of our authorized distributors