

Product datasheet

Anti-Japanese encephalitis virus antibody ab26950

1 References 1 Image

Overview

<b>Product name</b>	Anti-Japanese encephalitis virus antibody
<b>Description</b>	Rabbit polyclonal to Japanese encephalitis virus
<b>Host species</b>	Rabbit
<b>Tested applications</b>	<b>Suitable for:</b> ICC/IF
<b>Species reactivity</b>	<b>Reacts with:</b> Other species
<b>Immunogen</b>	Viral particles from C6/36 (mosquito cell line) amplified Japanese encephalitis virus (Nakayama strain).
<b>Positive control</b>	Japanese encephalitis virus infected BHK21 cells
<b>General notes</b>	<p>The Life Science industry has been in the grips of a reproducibility crisis for a number of years. Abcam is leading the way in addressing this with our range of recombinant monoclonal antibodies and knockout edited cell lines for gold-standard validation. Please check that this product meets your needs before purchasing.</p> <p>If you have any questions, special requirements or concerns, please send us an inquiry and/or contact our Support team ahead of purchase. Recommended alternatives for this product can be found below, along with publications, customer reviews and Q&amp;As</p>

Properties

<b>Form</b>	Liquid
<b>Storage instructions</b>	Shipped at 4°C. Store at +4°C short term (1-2 weeks). Upon delivery aliquot. Store at -20°C long term.
<b>Storage buffer</b>	Constituent: Whole serum
<b>Purity</b>	Whole antiserum
<b>Clonality</b>	Polyclonal
<b>Isotype</b>	IgG

Applications

**The Abpromise guarantee** Our [Abpromise guarantee](#) covers the use of ab26950 in the following tested applications. The application notes include recommended starting dilutions; optimal dilutions/concentrations should be determined by the end user.

Application	Abreviews	Notes
ICC/IF		

**Application notes**

ICC/IF: use at a dilution of 1/100.

Not yet tested in other applications.

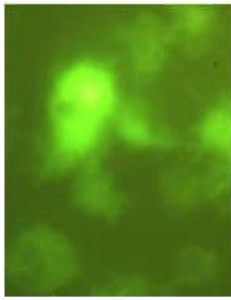
Optimal dilutions/concentrations should be determined by the end user.

**Target**

**Relevance**

Japanese encephalitis virus is a mosquito borne virus from the family Flaviviridae. Domestic pigs and wild birds are reservoirs of the virus, transmission to humans may cause severe symptoms. One of the most important Vectors of this disease is the mosquito *Culex tritaeniorhynchus*. This disease usually affects people in South East Asia and the Far East.

**Images**



Immunofluorescent analysis of Japanese encephalitis virus infected BHK21 cells using 10 µg/ml ab26950. Note that not every cell is infected.

Immunocytochemistry/ Immunofluorescence - Anti-Japanese encephalitis virus antibody (ab26950)

**Please note:** All products are "FOR RESEARCH USE ONLY. NOT FOR USE IN DIAGNOSTIC PROCEDURES"

**Our Abpromise to you: Quality guaranteed and expert technical support**

- Replacement or refund for products not performing as stated on the datasheet
- Valid for 12 months from date of delivery
- Response to your inquiry within 24 hours
- We provide support in Chinese, English, French, German, Japanese and Spanish
- Extensive multi-media technical resources to help you
- We investigate all quality concerns to ensure our products perform to the highest standards

If the product does not perform as described on this datasheet, we will offer a refund or replacement. For full details of the Abpromise, please visit <https://www.abcam.com/abpromise> or contact our technical team.

## Terms and conditions

---

- Guarantee only valid for products bought direct from Abcam or one of our authorized distributors