

## Product datasheet

# Anti-K23 antibody [EPR10943] ab156569

Recombinant RabMAb

[1 References](#) [4 Images](#)

### Overview

<b>Product name</b>	Anti-K23 antibody [EPR10943]
<b>Description</b>	Rabbit monoclonal [EPR10943] to K23
<b>Host species</b>	Rabbit
<b>Tested applications</b>	<b>Suitable for:</b> WB, IHC-P, Flow Cyt <b>Unsuitable for:</b> ICC/IF or IP
<b>Species reactivity</b>	<b>Reacts with:</b> Human
<b>Immunogen</b>	Recombinant fragment corresponding to Human K23. Database link: <a href="#">Q9C075</a>
<b>Positive control</b>	HepG2, JAR, and BxPC-3 cell lysates, Human gastric carcinoma tissue, JAR cells
<b>General notes</b>	<p>Mouse, Rat: We have preliminary internal testing data to indicate this antibody may not react with these species. Please contact us for more information.</p> <p>This product is a recombinant monoclonal antibody, which offers several advantages including:</p> <ul style="list-style-type: none"> <li>- High batch-to-batch consistency and reproducibility</li> <li>- Improved sensitivity and specificity</li> <li>- Long-term security of supply</li> <li>- Animal-free production</li> </ul> <p>For more information <a href="#">see here</a>.</p> <p>Our RabMAb<sup>®</sup> technology is a patented hybridoma-based technology for making rabbit monoclonal antibodies. For details on our patents, please refer to <a href="#">RabMAb<sup>®</sup> patents</a>.</p> <p><b>We are constantly working hard to ensure we provide our customers with best in class antibodies. As a result of this work we are pleased to now offer this antibody in purified format. We are in the process of updating our datasheets. The purified format is designated 'PUR' on our product labels. If you have any questions regarding this update, please contact our Scientific Support team.</b></p>

### Properties

<b>Form</b>	Liquid
<b>Storage instructions</b>	Shipped at 4°C. Upon delivery aliquot and store at -20°C. Avoid freeze / thaw cycles.
<b>Storage buffer</b>	pH: 7.2

	Preservative: 0.01% Sodium azide
	Constituents: 59% PBS, 40% Glycerol (glycerin, glycerine), 0.5% BSA
<b>Purity</b>	Protein A purified
<b>Clonality</b>	Monoclonal
<b>Clone number</b>	EPR10943
<b>Isotype</b>	IgG

## Applications

**The Abpromise guarantee** Our [Abpromise guarantee](#) covers the use of ab156569 in the following tested applications. The application notes include recommended starting dilutions; optimal dilutions/concentrations should be determined by the end user.

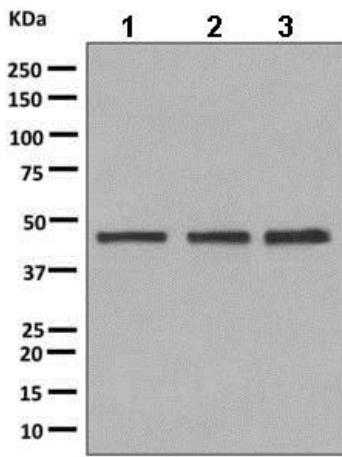
Application	Abreviews	Notes
<b>WB</b>		1/1000 - 1/10000. Detects a band of approximately 48 kDa (predicted molecular weight: 48 kDa).
<b>IHC-P</b>		1/50 - 1/100. Perform heat mediated antigen retrieval with citrate buffer pH 6 before commencing with IHC staining protocol.
<b>Flow Cyt</b>		1/10 - 1/100. <a href="#">ab172730</a> - Rabbit monoclonal IgG, is suitable for use as an isotype control with this antibody.

**Application notes** Is unsuitable for ICC/IF or IP.

## Target

**Sequence similarities** Belongs to the intermediate filament family.

## Images



Western blot - Anti-K23 antibody [EPR10943] (ab156569)

**All lanes :** Anti-K23 antibody [EPR10943] (ab156569) at 1/1000 dilution

**Lane 1 :** HepG2 cell lysate

**Lane 2 :** JAR cell lysate

**Lane 3 :** BxPC-3 cell lysate

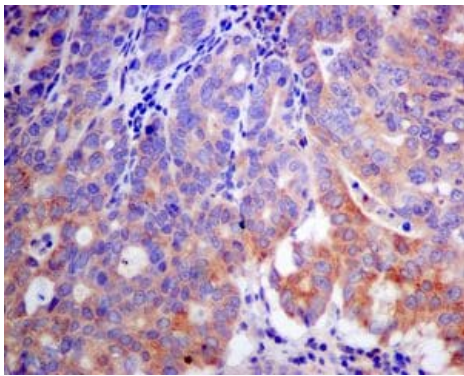
Lysates/proteins at 10 µg per lane.

**Secondary**

**All lanes :** HRP labelled goat anti-rabbit at 1/2000 dilution

**Predicted band size:** 48 kDa

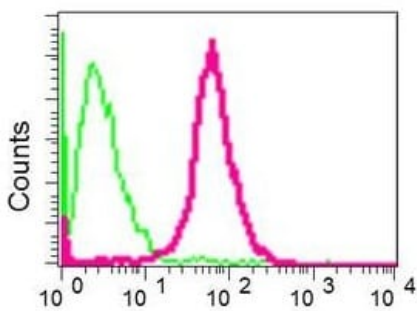
**Observed band size:** 48 kDa



Immunohistochemistry (Formalin/PFA-fixed paraffin-embedded sections) - Anti-K23 antibody [EPR10943] (ab156569)

Immunohistochemical analysis of paraffin embedded Human gastric carcinoma tissue labeling K23 with ab156569 antibody at 1/150.

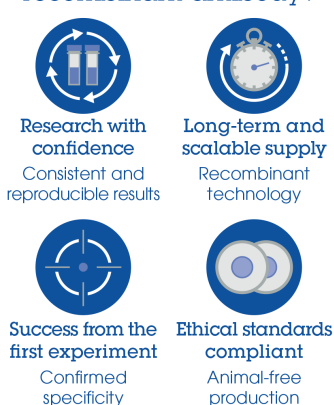
Perform heat mediated antigen retrieval with citrate buffer pH 6 before commencing with IHC staining protocol.



Flow Cytometry (Intracellular) - Anti-K23 antibody [EPR10943] (ab156569)

Flow Cytometrical analysis of permeabilized JAR cells with ab156569 antibody at a dilution of 1/10 (red) compared to a rabbit IgG (green).

Why choose a recombinant antibody?



**Research with confidence**  
Consistent and reproducible results

**Long-term and scalable supply**  
Recombinant technology

**Success from the first experiment**  
Confirmed specificity

**Ethical standards compliant**  
Animal-free production

Anti-K23 antibody [EPR10943] (ab156569)

**Please note:** All products are "FOR RESEARCH USE ONLY. NOT FOR USE IN DIAGNOSTIC PROCEDURES"

### Our Abpromise to you: Quality guaranteed and expert technical support

---

- Replacement or refund for products not performing as stated on the datasheet
- Valid for 12 months from date of delivery
- Response to your inquiry within 24 hours
- We provide support in Chinese, English, French, German, Japanese and Spanish
- Extensive multi-media technical resources to help you
- We investigate all quality concerns to ensure our products perform to the highest standards

If the product does not perform as described on this datasheet, we will offer a refund or replacement. For full details of the Abpromise, please visit <https://www.abcam.com/abpromise> or contact our technical team.

### Terms and conditions

---

- Guarantee only valid for products bought direct from Abcam or one of our authorized distributors