



Product datasheet

Anti-K80 antibody ab222138

1 Image

Overview

Product name	Anti-K80 antibody
Description	Rabbit polyclonal to K80
Host species	Rabbit
Tested applications	Suitable for: ICC/IF
Species reactivity	Reacts with: Human
Immunogen	<p>Recombinant fragment corresponding to Human K80 aa 209-297. Sequence:</p> <p>LGPSIPSPTTHHCCQPQDLDAECLHRTELETKLSLES FVELMKTIEQE LKDLAAQVKDVSVTVGMDSRCHIDLSGIVEEVKAQYD AV</p> <p>Database link: Q6KB66-3</p> <p style="text-align: right;">  Run BLAST with  Run BLAST with </p>
Positive control	ICC/IF: A431 cells.
General notes	Previously labelled as Keratin 80.

Properties

Form	Liquid
Storage instructions	Shipped at 4°C. Store at +4°C short term (1-2 weeks). Upon delivery aliquot. Store at -20°C long term. Avoid freeze / thaw cycle.
Storage buffer	<p>pH: 7.20 Preservative: 0.02% Sodium azide Constituents: 40% Glycerol, PBS</p>
Purity	Immunogen affinity purified
Clonality	Polyclonal
Isotype	IgG

Applications

Our [Abpromise guarantee](#) covers the use of **ab222138** in the following tested applications.

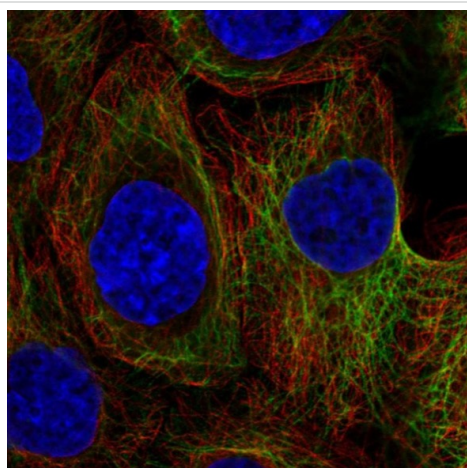
The application notes include recommended starting dilutions; optimal dilutions/concentrations should be determined by the end user.

Application	Abreviews	Notes
ICC/IF		Use a concentration of 1 - 4 µg/ml. Fixation/Permeabilization: PFA/Triton X-100.

Target

Tissue specificity	Weakly expressed in tongue, but not skin or in any other tissues or organs examined.
Sequence similarities	Belongs to the intermediate filament family.

Images



PFA-fixed, Triton X-100 permeabilized A431 (human epidermoid carcinoma cell line) cells stained for K80 (green) using ab222138 at 4 µg/ml in ICC/IF.

Immunocytochemistry/ Immunofluorescence - Anti-K80 antibody (ab222138)

Please note: All products are "FOR RESEARCH USE ONLY. NOT FOR USE IN DIAGNOSTIC PROCEDURES"

Our Abpromise to you: Quality guaranteed and expert technical support

- Replacement or refund for products not performing as stated on the datasheet
- Valid for 12 months from date of delivery
- Response to your inquiry within 24 hours
- We provide support in Chinese, English, French, German, Japanese and Spanish
- Extensive multi-media technical resources to help you
- We investigate all quality concerns to ensure our products perform to the highest standards

If the product does not perform as described on this datasheet, we will offer a refund or replacement. For full details of the Abpromise, please visit <https://www.abcam.com/abpromise> or contact our technical team.

Terms and conditions

- Guarantee only valid for products bought direct from Abcam or one of our authorized distributors