

Product datasheet

Anti-Kallikrein 11 antibody ab233278

6 Images

Overview

Product name	Anti-Kallikrein 11 antibody
Description	Rabbit polyclonal to Kallikrein 11
Host species	Rabbit
Tested applications	Suitable for: IHC-P, WB
Species reactivity	Reacts with: Mouse, Human
Immunogen	<p>Recombinant fragment (His-T7-tag) corresponding to Human Kallikrein 11 aa 39-282. Expressed in E.coli. N-terminal tags.</p> <p>Sequence:</p> <p>MGSSHHHHHHSSGLVPRGSHMASMTGGQQMGRGSE FILLALATGLVGGET RIIKGFECKPHSQPWQAALFEKTRLLCGATLIAPRWLLT AAHCLKPRYIV HLGQHNLQKEEGCEQTRTATESFPHPGFNNSLPNKD HRNDIMLVKMASPV SITWAVRPLTLSSRCVTAGTSCSLISGWGSTSSPQLRLP HTLRCANITIE HQKCENAYPGNITDTMVCASVQEGGKDSCQGDSGGP LVCNQSLQGIISWG QDPCAITRKPGVYTKVCKYVDWIQETMKNN</p>

Database link: [Q9UBX7](#)

 [Run BLAST with](#)

 [Run BLAST with](#)

Positive control	IHC-P: Human prostate, prostate cancer, kidney and stomach cancer tissues. WB: Mouse thymus and skin lysates; K562 cell lysate; Recombinant human Kallikrein 11 protein.
-------------------------	--

Properties

Form	Liquid
Storage instructions	Shipped at 4°C. Store at +4°C short term (1-2 weeks). Upon delivery aliquot. Store at -20°C long term. Avoid freeze / thaw cycle.
Storage buffer	<p>pH: 7.40</p> <p>Preservative: 0.02% Sodium azide</p> <p>Constituents: PBS, 50% Glycerol</p>

Purity	Protein A purified
Purification notes	ab233278 was purified by antigen-specific affinity chromatography followed by Protein A affinity chromatography.
Clonality	Polyclonal
Isotype	IgG

Applications

Our [Abpromise guarantee](#) covers the use of **ab233278** in the following tested applications.

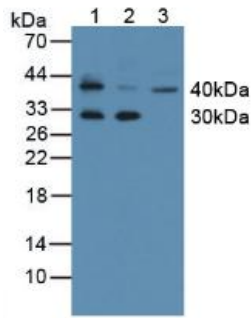
The application notes include recommended starting dilutions; optimal dilutions/concentrations should be determined by the end user.

Application	Abreviews	Notes
IHC-P		Use a concentration of 5 - 20 µg/ml.
WB		Use a concentration of 0.5 - 2 µg/ml. Predicted molecular weight: 31 kDa.

Target

Function	Possible multifunctional protease. Efficiently cleaves 'bz-Phe-Arg-4-methylcoumaryl-7-amide', a kallikrein substrate, and weakly cleaves other substrates for kallikrein and trypsin. Cleaves synthetic peptides after arginine but not lysine residues.
Tissue specificity	Expressed in brain, skin and prostate. Isoform 1 is expressed preferentially in brain. Isoform 2 is expressed in prostate. Present in seminal plasma at concentrations ranging from 2 to 37 microg/mL (at protein level).
Sequence similarities	Belongs to the peptidase S1 family. Kallikrein subfamily. Contains 1 peptidase S1 domain.
Post-translational modifications	About 40% of KLK11 is inactivated by internal cleavage after Arg-188. This proteolytic inactivation may be effected by plasminogen.
Cellular localization	Secreted.

Images



Western blot - Anti-Kallikrein 11 antibody
(ab233278)

All lanes : Anti-Kallikrein 11 antibody (ab233278) at 2 µg/ml

Lane 1 : Mouse thymus lysate

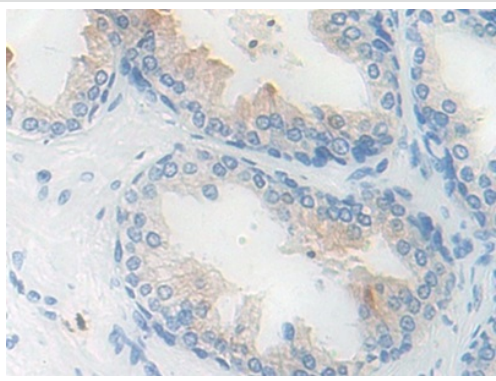
Lane 2 : Mouse skin lysate

Lane 3 : K562 (human chronic myelogenous leukemia cell line from bone marrow) cell lysate

Secondary

All lanes : HRP-Linked Guinea pig Anti-Rabbit at 1/2000 dilution

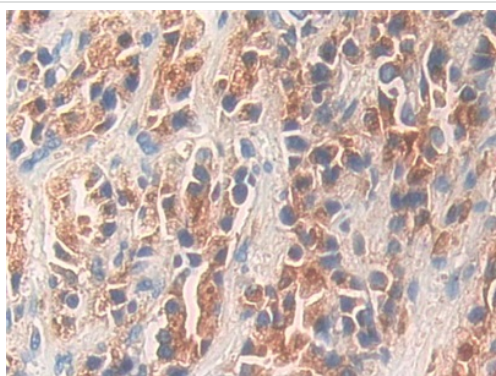
Predicted band size: 31 kDa



Immunohistochemistry (Formalin/PFA-fixed paraffin-embedded sections) - Anti-Kallikrein 11 antibody
(ab233278)

Paraffin-embedded human prostate tissue stained for Kallikrein 11 using ab233278 at 10 µg/ml in immunohistochemical analysis.

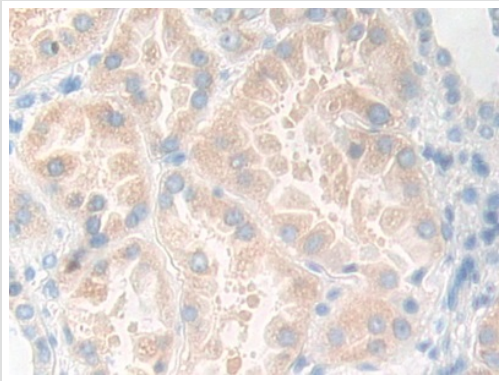
Secondary used: HRP-Linked Goat Anti-Rabbit IgG Polyclonal at 2 µg/ml. DAB staining.



Immunohistochemistry (Formalin/PFA-fixed paraffin-embedded sections) - Anti-Kallikrein 11 antibody
(ab233278)

Paraffin-embedded human prostate cancer tissue stained for Kallikrein 11 using ab233278 at 10 µg/ml in immunohistochemical analysis.

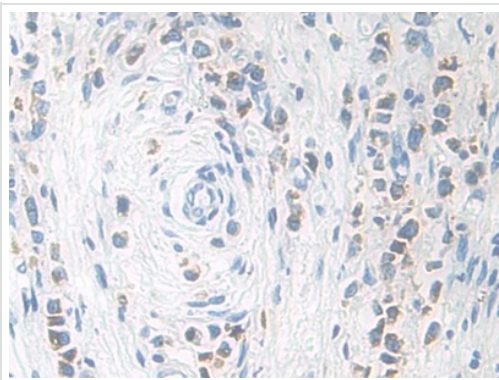
Secondary used: HRP-Linked Goat Anti-Rabbit IgG Polyclonal at 2 µg/ml. DAB staining.



Immunohistochemistry (Formalin/PFA-fixed paraffin-embedded sections) - Anti-Kallikrein 11 antibody (ab233278)

Paraffin-embedded human kidney tissue stained for Kallikrein 11 using ab233278 at 10 µg/ml in immunohistochemical analysis.

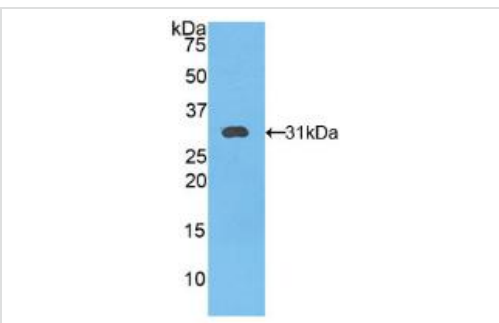
Secondary used: HRP-Linked Goat Anti-Rabbit IgG Polyclonal at 2 µg/ml. DAB staining.



Immunohistochemistry (Formalin/PFA-fixed paraffin-embedded sections) - Anti-Kallikrein 11 antibody (ab233278)

Paraffin-embedded human stomach cancer tissue stained for Kallikrein 11 using ab233278 at 10 µg/ml in immunohistochemical analysis.

Secondary used: HRP-Linked Goat Anti-Rabbit IgG Polyclonal at 2 µg/ml. DAB staining.



Western blot - Anti-Kallikrein 11 antibody (ab233278)

Anti-Kallikrein 11 antibody (ab233278) at 2 µg/ml + Recombinant human Kallikrein 11 protein

Secondary

HRP-Linked Guinea pig Anti-Rabbit at 1/2000 dilution

Predicted band size: 31 kDa

Our Abpromise to you: Quality guaranteed and expert technical support

- Replacement or refund for products not performing as stated on the datasheet
- Valid for 12 months from date of delivery
- Response to your inquiry within 24 hours

- We provide support in Chinese, English, French, German, Japanese and Spanish
- Extensive multi-media technical resources to help you
- We investigate all quality concerns to ensure our products perform to the highest standards

If the product does not perform as described on this datasheet, we will offer a refund or replacement. For full details of the Abpromise, please visit <https://www.abcam.com/abpromise> or contact our technical team.

Terms and conditions

- Guarantee only valid for products bought direct from Abcam or one of our authorized distributors