

Product datasheet

Anti-Kallikrein 14 antibody ab203226

2 Images

Overview

Product name	Anti-Kallikrein 14 antibody
Description	Rabbit polyclonal to Kallikrein 14
Host species	Rabbit
Tested applications	Suitable for: IHC-P, WB
Species reactivity	Reacts with: Mouse, Rat, Human
Immunogen	Synthetic peptide corresponding to Human Kallikrein 14 conjugated to Keyhole Limpet Haemocyanin (KLH). Database link: Q9P0G3
Positive control	Rat brain tissue.

Properties

Form	Liquid
Storage instructions	Shipped at 4°C. Store at +4°C short term (1-2 weeks). Upon delivery aliquot. Store at -20°C long term. Avoid freeze / thaw cycle.
Storage buffer	Preservative: 0.09% Sodium azide Constituents: 0.01% BSA, 50% Glycerol
Purity	Aqueous buffered solution Protein A purified
Clonality	Polyclonal
Isotype	IgG

Applications

Our [Abpromise guarantee](#) covers the use of **ab203226** in the following tested applications.

The application notes include recommended starting dilutions; optimal dilutions/concentrations should be determined by the end user.

Application	Abreviews	Notes
-------------	-----------	-------

Application	Abreviews	Notes
IHC-P		1/100 - 1/500. When using a fluorescent probe the recommended dilution is 1/50 – 1/200
WB		1/100 - 1/1000. Predicted molecular weight: 29 kDa.

Target

Function

Serine-type endopeptidase with a dual trypsin-like and chymotrypsin-like substrate specificity. May activate/inactivate the proteinase-activated receptors F2R, F2RL1 and F2RL3 and other kallikreins including KLK1, KLK3, KLK5 and KLK11. May function in seminal clot liquefaction through direct cleavage of the semenogelin SEMG1 and SEMG2 and activation of KLK3. May function through desmoglein DSG1 cleavage in epidermal desquamation a process by which the most superficial corneocytes are shed from the skin surface. May be involved in several aspects of tumor progression including growth, invasion and angiogenesis.

Tissue specificity

Highly expressed in CNS, bone marrow and fetal liver. Also expressed in breast, thyroid, kidney, colon, pancreas, spleen, prostate, uterus, small intestine, placenta and skeletal muscle. Among 40 tissues tested, the highest expression is detected in skin followed by breast and prostate (at protein level). Expressed in stratum corneum by sweat ducts and sweat glands and detected in sweat (at protein level).

Sequence similarities

Belongs to the peptidase S1 family. Kallikrein subfamily.
Contains 1 peptidase S1 domain.

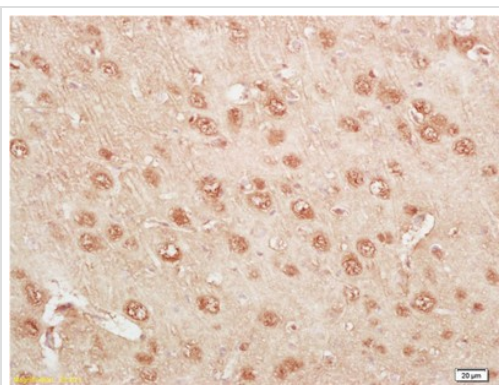
Post-translational modifications

Proteolytic cleavage of the activation peptide produces the active enzyme.

Cellular localization

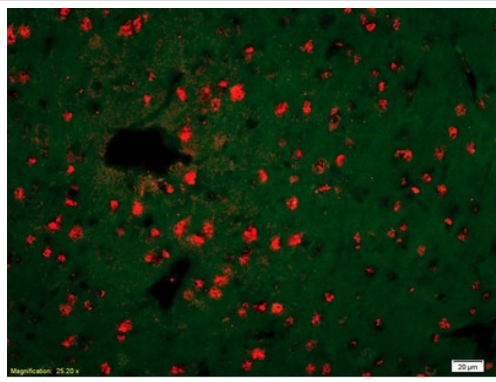
Secreted > extracellular space.

Images



Immunohistochemical analysis of formalin-fixed and paraffin-embedded rat brain labeling Kallikrein 14 with ab203226 at 1/200 dilution with DAB staining.

Immunohistochemistry (Formalin/PFA-fixed paraffin-embedded sections) - Anti-Kallikrein 14 antibody (ab203226)



Immunohistochemistry (Formalin/PFA-fixed paraffin-embedded sections) - Anti-Kallikrein 14 antibody (ab203226)

Immunohistochemical analysis of formalin-fixed and paraffin-embedded rat brain labeling Kallikrein 14 with ab203226 at 1/200 dilution overnight at 4°C. The secondary antibody was Goat Anti-Rabbit IgG, Cy3 conjugated used at 1/200 dilution for 40 minutes at 37°C.

Please note: All products are "FOR RESEARCH USE ONLY. NOT FOR USE IN DIAGNOSTIC PROCEDURES"

Our Abpromise to you: Quality guaranteed and expert technical support

- Replacement or refund for products not performing as stated on the datasheet
- Valid for 12 months from date of delivery
- Response to your inquiry within 24 hours

- We provide support in Chinese, English, French, German, Japanese and Spanish
- Extensive multi-media technical resources to help you
- We investigate all quality concerns to ensure our products perform to the highest standards

If the product does not perform as described on this datasheet, we will offer a refund or replacement. For full details of the Abpromise, please visit <https://www.abcam.com/abpromise> or contact our technical team.

Terms and conditions

- Guarantee only valid for products bought direct from Abcam or one of our authorized distributors