



Product datasheet

Anti-Kappa light chain antibody [IGKC/1999R] ab238009

Recombinant

3 Images

Overview

Product name	Anti-Kappa light chain antibody [IGKC/1999R]
Description	Rabbit monoclonal [IGKC/1999R] to Kappa light chain
Host species	Rabbit
Tested applications	Suitable for: Protein Array, IHC-P
Species reactivity	Reacts with: Human
Immunogen	<p>Recombinant full length protein corresponding to Human Kappa light chain aa 1-117. Sequence:</p> <p>MDMRVLAQLLGLLLLCFPGARCDIQMTQSPSSLSASVGD RVTITCRASQG ISSWLAWYQQKPEKAPKSLIYAASSLQSGVPSRFSGSGS GTDFTLTISSL QPEDFATYYCQQYNSYP</p> <p>Database link: P01601</p> <p style="text-align: right;">  Run BLAST with  Run BLAST with </p>
Positive control	IHC-P: Human tonsil tissue.
General notes	<p>Reproducibility is key to advancing scientific discovery and accelerating scientists' next breakthrough.</p> <p>Abcam is leading the way with our range of recombinant antibodies, knockout-validated antibodies and knockout cell lines, all of which support improved reproducibility.</p> <p>We are also planning to innovate the way in which we present recommended applications and species on our product datasheets, so that only applications & species that have been tested in our own labs, our suppliers or by selected trusted collaborators are covered by our Abpromise™ guarantee.</p> <p>In preparation for this, we have started to update the applications & species that this product is Abpromise guaranteed for.</p> <p>We are also updating the applications & species that this product has been “predicted to work with,” however this information is not covered by our Abpromise guarantee.</p> <p>Applications & species from publications and Abreviews that have not been tested in our own labs or in those of our suppliers are not covered by the Abpromise guarantee.</p>

Please check that this product meets your needs before purchasing. If you have any questions, special requirements or concerns, please send us an inquiry and/or contact our Support team ahead of purchase. Recommended alternatives for this product can be found below, as well as customer reviews and Q&As.

Properties

Form	Liquid
Storage instructions	Shipped at 4°C. Store at +4°C short term (1-2 weeks). Upon delivery aliquot. Store at -20°C long term. Avoid freeze / thaw cycle.
Storage buffer	Preservative: 0.05% Sodium azide Constituents: PBS, 0.05% BSA
Purity	Protein A purified
Clonality	Monoclonal
Clone number	IGKC/1999R
Isotype	IgG

Applications

Our [Abpromise guarantee](#) covers the use of **ab238009** in the following tested applications.

The application notes include recommended starting dilutions; optimal dilutions/concentrations should be determined by the end user.

Application	Abreviews	Notes
Protein Array		Use at an assay dependent concentration.
IHC-P		Use a concentration of 0.5 - 1 µg/ml. Perform heat mediated antigen retrieval with citrate buffer pH 6 before commencing with IHC staining protocol. Incubate with primary antibody for 30 minutes at RT.

Target

Relevance

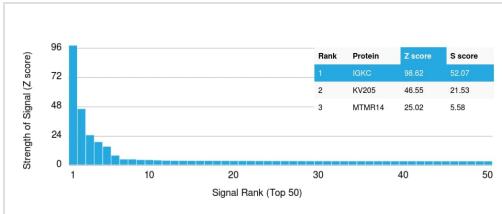
Immunoglobulins belong to a group of related glyco proteins which make up 20% of serum proteins. Antigens and immunoglobulins react to confer immunity to individuals. Immunoglobulins have similar structures of two identical heavy chains and two identical light chains. Both the heavy chains and the light chains are divided into constant and variable regions. The constant regions have the same amino acid sequences between all the immunoglobulin classes. The variable regions have approximately 110 amino acids with high sequence variability. The amino acid sequence of the heavy chain determines the class of an immunoglobulin. The five types of immunoglobulin heavy chains are known as: IgG, IgA, IgM, IgD, and IgE. IgG is divided into four subclasses, and IgA is divided into two subclasses. In serum IgA and IgG are monomers with a single 4 polypeptide unit; while, IgM is a pentamer. IgA may also form polymers. Kappa light chain antibody can be used for the identification of leukemias, plasmacytomas and certain non Hodgkin's lymphomas. Kappa light chain contains one immunoglobulin like domain. The EU sequence has the INV allotypic marker, Ala 45 and Val 83. The ROY sequence has the INV

allotypic marker, Ala 45 and Leu 83.

Cellular localization

Cytoplasmic and Secreted

Images

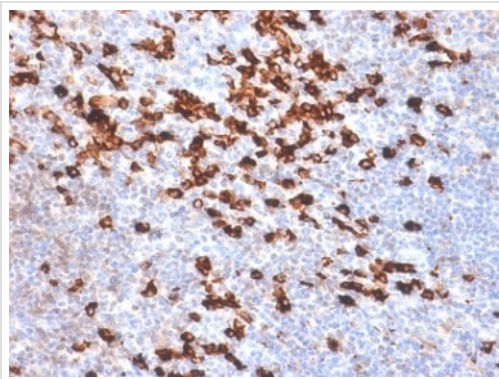


Protein Array - Anti-Kappa light chain antibody
[IGKC/1999R] (ab238009)

ab238009 was tested in protein array against over 19000 different full-length human proteins.

Z- and S- Score: The Z-score represents the strength of a signal that a monoclonal antibody (MAb) (in combination with a fluorescently-tagged anti-IgG secondary antibody) produces when binding to a particular protein on the HuProt™ array. Z-scores are described in units of standard deviations (SD's) above the mean value of all signals generated on that array. If targets on HuProt™ are arranged in descending order of the Z-score, the S-score is the difference (also in units of SD's) between the Z-score. S-score therefore represents the relative target specificity of a MAb to its intended target.

A MAb is specific to its intended target if the MAb has an S-score of at least 2.5. For example, if a MAb binds to protein X with a Z-score of 43 and to protein Y with a Z-score of 14, then the S-score for the binding of that MAb to protein X is equal to 29.



Immunohistochemistry (Formalin/PFA-fixed paraffin-embedded sections) - Anti-Kappa light chain antibody [IGKC/1999R] (ab238009)

Formalin-fixed, paraffin-embedded human tonsil tissue stained for Kappa light chain using ab238009 at 1 µg/ml in immunohistochemical analysis.

Why choose a recombinant antibody?



Research with confidence
Consistent and reproducible results



Long-term and scalable supply
Recombinant technology



Success from the first experiment
Confirmed specificity



Ethical standards compliant
Animal-free production

Anti-Kappa light chain antibody [IGKC/1999R]
(ab238009)

Please note: All products are "FOR RESEARCH USE ONLY. NOT FOR USE IN DIAGNOSTIC PROCEDURES"

Our Abpromise to you: Quality guaranteed and expert technical support

- Replacement or refund for products not performing as stated on the datasheet
- Valid for 12 months from date of delivery
- Response to your inquiry within 24 hours
- We provide support in Chinese, English, French, German, Japanese and Spanish
- Extensive multi-media technical resources to help you
- We investigate all quality concerns to ensure our products perform to the highest standards

If the product does not perform as described on this datasheet, we will offer a refund or replacement. For full details of the Abpromise, please visit <https://www.abcam.com/abpromise> or contact our technical team.

Terms and conditions

- Guarantee only valid for products bought direct from Abcam or one of our authorized distributors