

Product datasheet

Anti-Kappa light chain antibody [SP148] ab227654

Recombinant RabMAb

8 Images

Overview

Product name	Anti-Kappa light chain antibody [SP148]
Description	Rabbit monoclonal [SP148] to Kappa light chain
Host species	Rabbit
Tested applications	Suitable for: IHC-P, WB
Species reactivity	Reacts with: Human
Immunogen	Other Immunogen Type corresponding to Human Kappa light chain. Free kappa light chain from pooled human IgG lambda myeloma sera.
Positive control	IHC-P: Human tonsil, colon, stomach, spleen, follicular lymphoma, and B-cell lymphoma tissue; WB: Human spleen lysate.

Properties

Form	Liquid
Storage instructions	Shipped at 4°C. Store at +4°C short term (1-2 weeks). Upon delivery aliquot. Store at -20°C long term. Avoid freeze / thaw cycle.
Storage buffer	pH: 7.6 Preservative: 0.1% Sodium azide Constituents: PBS, 1% BSA
Purity	Protein A/G purified
Purification notes	Purified from TCS by protein A/G.
Clonality	Monoclonal
Clone number	SP148
Isotype	IgG

Applications

Our [Abpromise guarantee](#) covers the use of **ab227654** in the following tested applications.

The application notes include recommended starting dilutions; optimal dilutions/concentrations should be determined by the end user.

Application	Abreviews	Notes
IHC-P		1/100. For antigen retrieval: Boil tissue section in 1mM EDTA buffer, pH 8.0 for 10 minutes followed by cooling at room temperature for 20 minutes before commencing with IHC staining protocol.
WB		1/100. Predicted molecular weight: 25 kDa.

Target

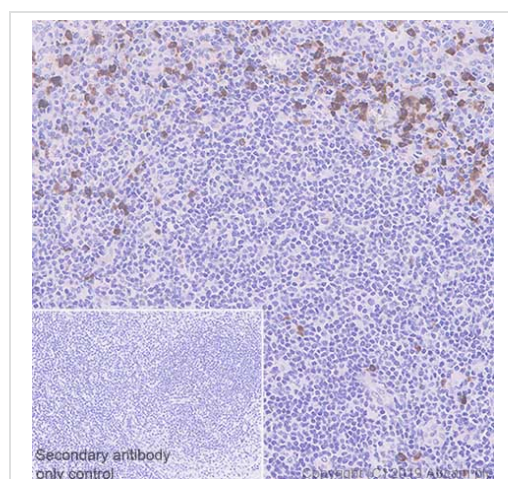
Relevance

Immunoglobulins belong to a group of related glyco proteins which make up 20% of serum proteins. Antigens and immunoglobulins react to confer immunity to individuals. Immunoglobulins have similar structures of two identical heavy chains and two identical light chains. Both the heavy chains and the light chains are divided into constant and variable regions. The constant regions have the same amino acid sequences between all the immunoglobulin classes. The variable regions have approximately 110 amino acids with high sequence variability. The amino acid sequence of the heavy chain determines the class of an immunoglobulin. The five types of immunoglobulin heavy chains are known as: IgG, IgA, IgM, IgD, and IgE. IgG is divided into four subclasses, and IgA is divided into two subclasses. In serum IgA and IgG are monomers with a single 4 polypeptide unit; while, IgM is a pentamer. IgA may also form polymers. Kappa light chain antibody can be used for the identification of leukemias, plasmacytomas and certain non Hodgkin's lymphomas. Kappa light chain contains one immunoglobulin like domain. The EU sequence has the INV allotypic marker, Ala 45 and Val 83. The ROY sequence has the INV allotypic marker, Ala 45 and Leu 83.

Cellular localization

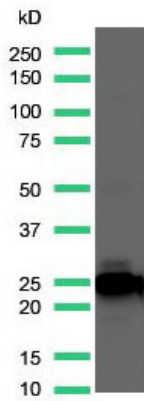
Cytoplasmic and Secreted

Images



Immunohistochemistry (Formalin/PFA-fixed paraffin-embedded sections) analysis of Human tonsil tissue sections labeling Kappa light chain with Purified ab227654 at 1/100 dilution (0.90 µg/ml). Heat mediated antigen retrieval was performed Heat mediated antigen retrieval with Tris-EDTA buffer (pH 9.0, epitope retrieval solution 2) for 20mins. Rabbit specific IHC polymer detection kit HRP/DAB ([ab209101](#)) was used as the secondary antibody. Negative control: PBS instead of the primary antibody. Hematoxylin was used as a counterstain.

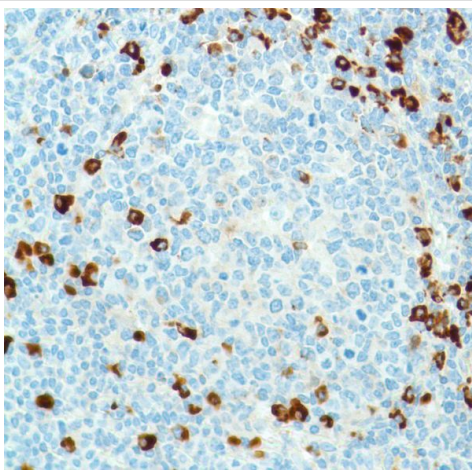
Immunohistochemistry (Formalin/PFA-fixed paraffin-embedded sections) - Anti-Kappa light chain antibody [SP148] (ab227654)



Western blot - Anti-Kappa light chain antibody [SP148] (ab227654)

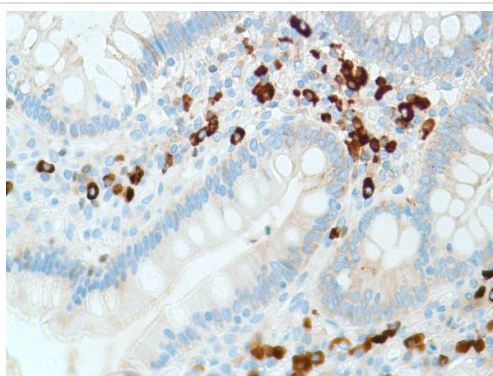
Anti-Kappa light chain antibody [SP148] (ab227654) at 1/100 dilution + Human spleen lysate

Predicted band size: 25 kDa



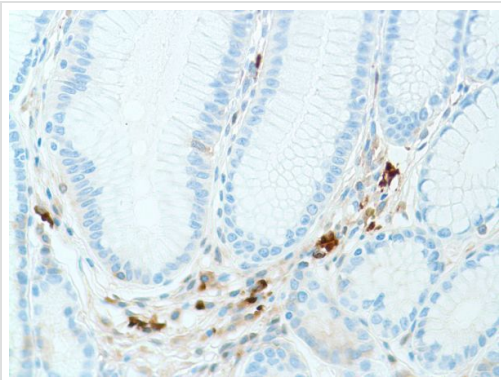
Immunohistochemistry (Formalin/PFA-fixed paraffin-embedded sections) - Anti-Kappa light chain antibody [SP148] (ab227654)

Formalin-fixed, paraffin-embedded human tonsil tissue stained for Kappa light chain using ab227654 at 1/100 dilution in immunohistochemical analysis.



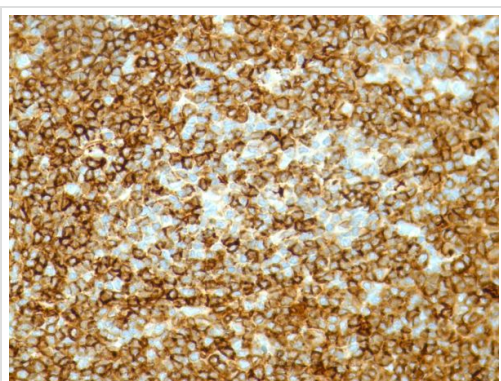
Immunohistochemistry (Formalin/PFA-fixed paraffin-embedded sections) - Anti-Kappa light chain antibody [SP148] (ab227654)

Formalin-fixed, paraffin-embedded human colon tissue stained for Kappa light chain using ab227654 at 1/100 dilution in immunohistochemical analysis.



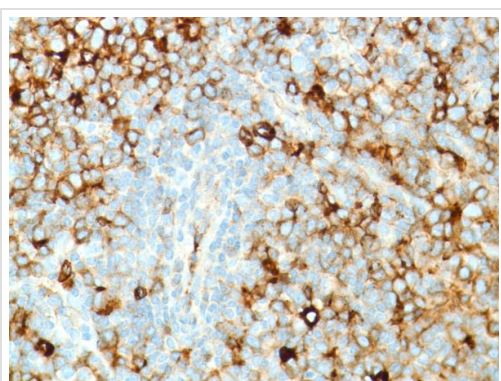
Immunohistochemistry (Formalin/PFA-fixed paraffin-embedded sections) - Anti-Kappa light chain antibody [SP148] (ab227654)

Formalin-fixed, paraffin-embedded human stomach tissue stained for Kappa light chain using ab227654 at 1/100 dilution in immunohistochemical analysis.



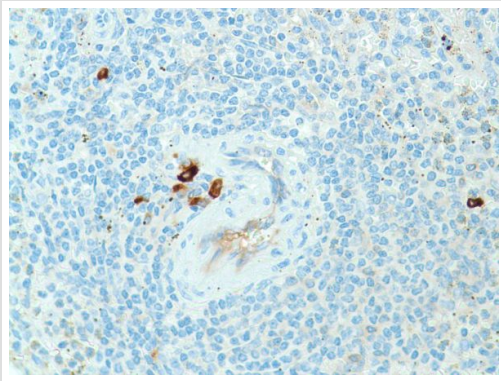
Immunohistochemistry (Formalin/PFA-fixed paraffin-embedded sections) - Anti-Kappa light chain antibody [SP148] (ab227654)

Formalin-fixed, paraffin-embedded human follicular lymphoma tissue stained for Kappa light chain using ab227654 at 1/100 dilution in immunohistochemical analysis.



Immunohistochemistry (Formalin/PFA-fixed paraffin-embedded sections) - Anti-Kappa light chain antibody [SP148] (ab227654)

Formalin-fixed, paraffin-embedded human B-cell lymphoma tissue stained for Kappa light chain using ab227654 at 1/100 dilution in immunohistochemical analysis.



Formalin-fixed, paraffin-embedded human spleen tissue stained for Kappa light chain using ab227654 at 1/100 dilution in immunohistochemical analysis.

Immunohistochemistry (Formalin/PFA-fixed paraffin-embedded sections) - Anti-Kappa light chain antibody [SP148] (ab227654)

Please note: All products are "FOR RESEARCH USE ONLY. NOT FOR USE IN DIAGNOSTIC PROCEDURES"

Our Abpromise to you: Quality guaranteed and expert technical support

- Replacement or refund for products not performing as stated on the datasheet
- Valid for 12 months from date of delivery
- Response to your inquiry within 24 hours
- We provide support in Chinese, English, French, German, Japanese and Spanish
- Extensive multi-media technical resources to help you
- We investigate all quality concerns to ensure our products perform to the highest standards

If the product does not perform as described on this datasheet, we will offer a refund or replacement. For full details of the Abpromise, please visit <https://www.abcam.com/abpromise> or contact our technical team.

Terms and conditions

- Guarantee only valid for products bought direct from Abcam or one of our authorized distributors