


Product datasheet

Anti-KAT13C / NCOA2 antibody ab10508

1 References 3 Images

Overview

Product name	Anti-KAT13C / NCOA2 antibody
Description	Rabbit polyclonal to KAT13C / NCOA2
Host species	Rabbit
Specificity	We have data to indicate that this antibody may not cross react with <i>Xenopus laevis</i> . However, this has not been conclusively tested and expression levels may vary in certain cell lines/tissues.
Tested applications	Suitable for: IP, IHC-P, WB
Species reactivity	Reacts with: Mouse, Human Predicted to work with: Chimpanzee, Rhesus monkey, Gorilla 
Immunogen	Synthetic peptide corresponding to KAT13C/ NCOA2. Database link: Q15596
Positive control	Nuclear or cytosolic extract from HeLa cells.

Properties

Form	Liquid
Storage instructions	Shipped at 4°C. Upon delivery aliquot and store at -20°C. Avoid freeze / thaw cycles.
Storage buffer	Preservative: 0.1% Sodium azide Constituents: 0.021% PBS, 1.764% Sodium citrate, 1.815% Tris
Purity	Immunogen affinity purified
Purification notes	Antibodies were affinity purified using the peptide immobilized on solid support.
Clonality	Polyclonal
Isotype	IgG

Applications

Our [Abpromise guarantee](#) covers the use of **ab10508** in the following tested applications.

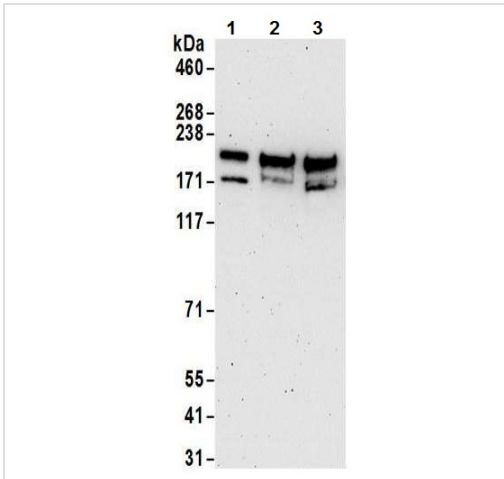
The application notes include recommended starting dilutions; optimal dilutions/concentrations should be determined by the end user.

Application	Abreviews	Notes
IP		Use at 1-4 µg/mg of lysate.
IHC-P		1/500 - 1/2000. Perform heat mediated antigen retrieval with citrate buffer pH 6 before commencing with IHC staining protocol.
WB		1/1000 - 1/10000. Predicted molecular weight: 159 kDa.

Target

Function	Transcriptional coactivator for steroid receptors and nuclear receptors. Coactivator of the steroid binding domain (AF-2) but not of the modulating N-terminal domain (AF-1). Required with NCOA1 to control energy balance between white and brown adipose tissues.
Involvement in disease	Note=Chromosomal aberrations involving NCOA2 may be a cause of acute myeloid leukemias. Inversion inv(8)(p11;q13) generates the KAT6A-NCOA2 oncogene, which consists of the N-terminal part of KAT6A and the C-terminal part of NCOA2/TIF2. KAT6A-NCOA2 binds to CREBBP and disrupts its function in transcription activation.
Sequence similarities	Belongs to the SRC/p160 nuclear receptor coactivator family. Contains 1 bHLH (basic helix-loop-helix) domain. Contains 1 PAS (PER-ARNT-SIM) domain.
Domain	Contains four Leu-Xaa-Xaa-Leu-Leu (LXXLL) motifs. The LXXLL motifs are essential for the association with nuclear receptors and are, at least in part, functionally redundant. The LLXXLXXXL motif is involved in transcriptional coactivation and CREBBP/CBP binding. Contains 2 C-terminal transcription activation domains (AD1 and AD2) that can function independently.
Post-translational modifications	Phosphorylated upon DNA damage, probably by ATM or ATR.
Cellular localization	Nucleus.

Images



Western blot - Anti-KAT13C / NCOA2 antibody (ab10508)

All lanes : Anti-KAT13C / NCOA2 antibody (ab10508) at 1 µg/ml

Lane 1 : TCMK-1 whole cell lysate

Lane 2 : 4T1 whole cell lysate

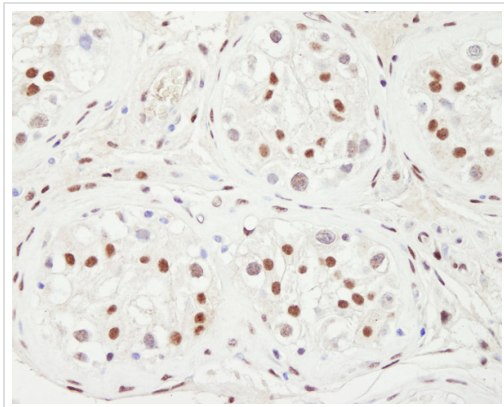
Lane 3 : CT26.WT whole cell lysate

Lysates/proteins at 50 µg per lane.

Developed using the ECL technique.

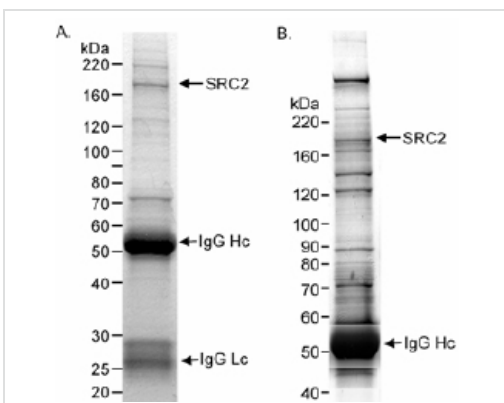
Predicted band size: 159 kDa

Exposure time: 3 minutes



Immunohistochemistry (Formalin/PFA-fixed paraffin-embedded sections) - Anti-KAT13C / NCOA2 antibody (ab10508)

Immunohistochemistry (Formalin/PFA-fixed paraffin-embedded sections) analysis of human testicular seminoma tissue labelling KAT13C / NCOA2 with ab10508 at 1/1000 (1µg/ml). Detection: DAB.



Immunoprecipitation - Anti-KAT13C / NCOA2 antibody (ab10508)

ab10508 immunoprecipitation of human NCOA2 (SRC2).

Samples: Nuclear extract (A, 10 mg) or cytosolic (S100) extract (B, 10 mg) from HeLa cells. *Antibody:* ab10508 used at 20 µg/10 mg lysate. *Detection:* Coomassie Brilliant Blue R250 staining of SDS-PAGE gel followed by mass spectrometry to confirm the identity of the band that is NCOA2 (SRC2).

Please note: All products are "FOR RESEARCH USE ONLY AND ARE NOT INTENDED FOR DIAGNOSTIC OR THERAPEUTIC USE"

Our Abpromise to you: Quality guaranteed and expert technical support

- Replacement or refund for products not performing as stated on the datasheet
- Valid for 12 months from date of delivery
- Response to your inquiry within 24 hours

- We provide support in Chinese, English, French, German, Japanese and Spanish
- Extensive multi-media technical resources to help you
- We investigate all quality concerns to ensure our products perform to the highest standards

If the product does not perform as described on this datasheet, we will offer a refund or replacement. For full details of the Abpromise, please visit <https://www.abcam.com/abpromise> or contact our technical team.

Terms and conditions

- Guarantee only valid for products bought direct from Abcam or one of our authorized distributors