

Product datasheet

Anti-KBTBD4 antibody ab235357

3 Images

Overview

<b>Product name</b>	Anti-KBTBD4 antibody
<b>Description</b>	Rabbit polyclonal to KBTBD4
<b>Host species</b>	Rabbit
<b>Tested applications</b>	<b>Suitable for:</b> WB, IHC-P
<b>Species reactivity</b>	<b>Reacts with:</b> Mouse, Human
<b>Immunogen</b>	Recombinant fragment corresponding to Human KBTBD4 aa 151-415. Database link: <a href="#">Q9NVX7</a>
<b>Positive control</b>	WB: U-87 MG and NIH/3T3 whole cell lysate. IHC-P: Human breast cancer and testis tissue.

Properties

<b>Form</b>	Liquid
<b>Storage instructions</b>	Shipped at 4°C. Store at +4°C short term (1-2 weeks). Upon delivery aliquot. Store at -20°C long term. Avoid freeze / thaw cycle.
<b>Storage buffer</b>	pH: 7.4 Preservative: 0.03% Proclin Constituents: PBS, 50% Glycerol
<b>Purity</b>	Protein G purified
<b>Purification notes</b>	Purity >95%
<b>Clonality</b>	Polyclonal
<b>Isotype</b>	IgG

Applications

Our [Abpromise guarantee](#) covers the use of **ab235357** in the following tested applications.

The application notes include recommended starting dilutions; optimal dilutions/concentrations should be determined by the end user.

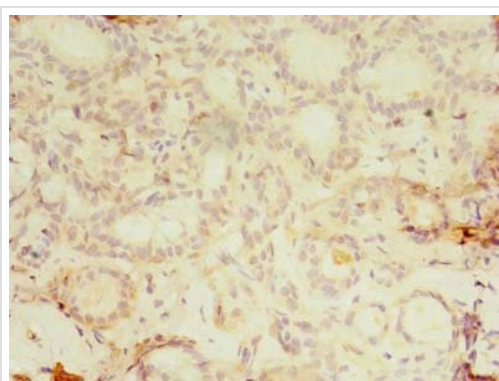
Application	Abreviews	Notes
WB		1/500 - 1/2000. Predicted molecular weight: 58 kDa.

Application	Abreviews	Notes
IHC-P		1/20 - 1/200.

## Target

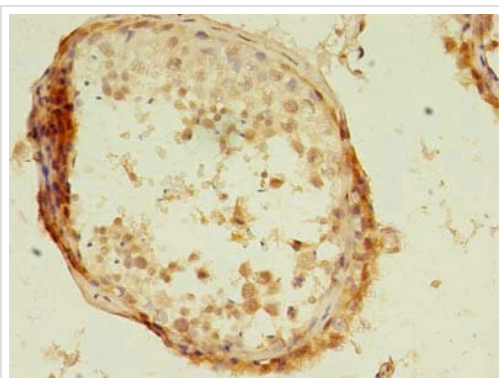
<b>Sequence similarities</b>	Contains 1 BACK (BTB/Kelch associated) domain. Contains 1 BTB (POZ) domain. Contains 5 Kelch repeats.
------------------------------	---

## Images



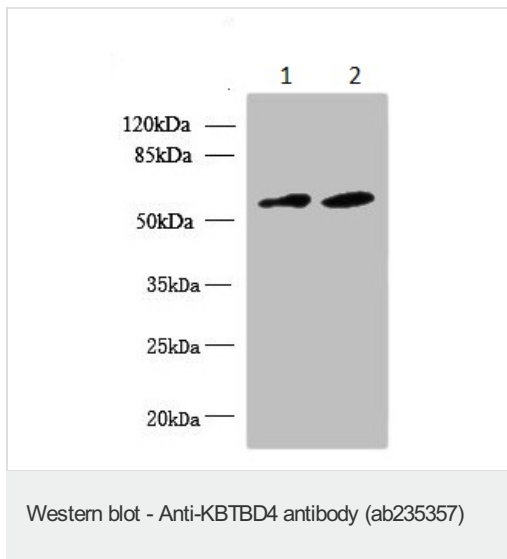
Paraffin-embedded human breast cancer stained for KBTBD4 using ab235357 at 1/100 dilution in immunohistochemical analysis.

Immunohistochemistry (Formalin/PFA-fixed paraffin-embedded sections) - Anti-KBTBD4 antibody (ab235357)



Paraffin-embedded human testis stained for KBTBD4 using ab235357 at 1/100 dilution in immunohistochemical analysis.

Immunohistochemistry (Formalin/PFA-fixed paraffin-embedded sections) - Anti-KBTBD4 antibody (ab235357)



**All lanes :** Anti-KBTBD4 antibody (ab235357) at 1/500 dilution

**Lane 1 :** U-87 (human glioblastoma-astrocytoma epithelial cell line) whole cell lysate

**Lane 2 :** NIH/3T3 (mouse embryo fibroblast cell line) whole cell lysate

#### **Secondary**

**All lanes :** Goat polyclonal to Rabbit IgG at 1/10000 dilution

**Predicted band size:** 58 kDa

**Please note:** All products are "FOR RESEARCH USE ONLY. NOT FOR USE IN DIAGNOSTIC PROCEDURES"

#### **Our Abpromise to you: Quality guaranteed and expert technical support**

- Replacement or refund for products not performing as stated on the datasheet
- Valid for 12 months from date of delivery
- Response to your inquiry within 24 hours
- We provide support in Chinese, English, French, German, Japanese and Spanish
- Extensive multi-media technical resources to help you
- We investigate all quality concerns to ensure our products perform to the highest standards

If the product does not perform as described on this datasheet, we will offer a refund or replacement. For full details of the Abpromise, please visit <https://www.abcam.com/abpromise> or contact our technical team.

#### **Terms and conditions**

- Guarantee only valid for products bought direct from Abcam or one of our authorized distributors