


Product datasheet

Anti-KCC2 antibody ab97502

2 Images

Overview

<b>Product name</b>	Anti-KCC2 antibody
<b>Description</b>	Rabbit polyclonal to KCC2
<b>Host species</b>	Rabbit
<b>Tested applications</b>	<b>Suitable for:</b> ICC/IF, WB
<b>Species reactivity</b>	<b>Reacts with:</b> Rat <b>Predicted to work with:</b> Mouse, Cow, Dog, Human 
<b>Immunogen</b>	Synthetic peptide conjugated to KLH derived from within residues 1 - 100 of Human KCC2. Read Abcam's proprietary immunogen policy
<b>Positive control</b>	This antibody gave a positive signal in the following rat tissue lysates: brain; cortex; hippocampus.

Properties

<b>Form</b>	Liquid
<b>Storage instructions</b>	Shipped at 4°C. Store at +4°C short term (1-2 weeks). Upon delivery aliquot. Store at -20°C or -80°C. Avoid freeze / thaw cycle.
<b>Storage buffer</b>	Preservative: 0.02% Sodium Azide Constituents: 1% BSA, PBS, pH 7.4
<b>Purity</b>	Immunogen affinity purified
<b>Clonality</b>	Polyclonal
<b>Isotype</b>	IgG

Applications

Our [Abpromise guarantee](#) covers the use of **ab97502** in the following tested applications.

The application notes include recommended starting dilutions; optimal dilutions/concentrations should be determined by the end user.

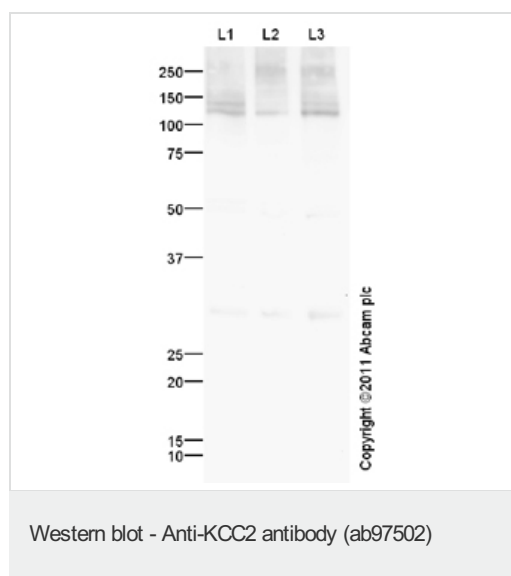
Application	Abreviews	Notes
ICC/IF		Use a concentration of 5 µg/ml.

Application	Abreviews	Notes
WB		Use a concentration of 1 µg/ml. Detects a band of approximately 126 kDa (predicted molecular weight: 126 kDa).

## Target

<b>Function</b>	Mediates electroneutral potassium-chloride cotransport in mature neurons. Transport occurs under isotonic conditions, but is activated 20-fold by cell swelling. Important for Cl(-) homeostasis in neurons.
<b>Tissue specificity</b>	Brain specific. Detected in neuronal cells.
<b>Sequence similarities</b>	Belongs to the SLC12A transporter family.
<b>Cellular localization</b>	Membrane.

## Images



**All lanes :** Anti-KCC2 antibody (ab97502) at 1 µg/ml

**Lane 1 :** Brain (Rat) Tissue Lysate

**Lane 2 :** Rat Cortex Tissue Lysate

**Lane 3 :** Rat Hippocampus Tissue Lysate

Lysates/proteins at 10 µg per lane.

### Secondary

**All lanes :** Goat Anti-Rabbit IgG H&L (HRP) preadsorbed (ab97080) at 1/5000 dilution

Developed using the ECL technique.

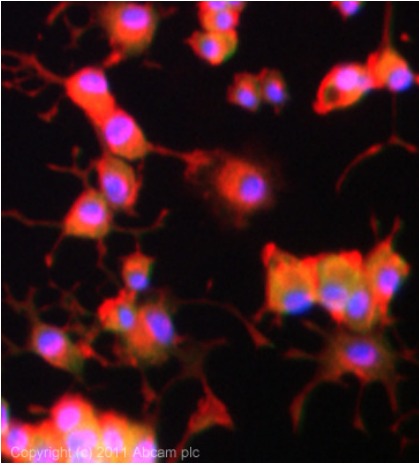
Performed under reducing conditions.

**Predicted band size:** 126 kDa

**Observed band size:** 126 kDa

**Additional bands at:** 250 kDa, 30 kDa. We are unsure as to the identity of these extra bands.

**Exposure time:** 2 minutes



Immunocytochemistry/ Immunofluorescence - Anti-KCC2 antibody (ab97502)

ICC/IF image of ab97502 stained PC12 cells. The cells were 100% methanol fixed (5 min) and then incubated in 1%BSA / 10% normal goat serum / 0.3M glycine in 0.1% PBS-Tween for 1h to permeabilise the cells and block non-specific protein-protein interactions. The cells were then incubated with the antibody (ab97502, 5µg/ml) overnight at +4°C. The secondary antibody (green) was ab96899, DyLight® 488 goat anti-rabbit IgG (H+L) used at a 1/250 dilution for 1h. Alexa Fluor® 594 WGA was used to label plasma membranes (red) at a 1/200 dilution for 1h. DAPI was used to stain the cell nuclei (blue) at a concentration of 1.43µM.

**Please note:** All products are "FOR RESEARCH USE ONLY AND ARE NOT INTENDED FOR DIAGNOSTIC OR THERAPEUTIC USE"

### Our Abpromise to you: Quality guaranteed and expert technical support

- Replacement or refund for products not performing as stated on the datasheet
- Valid for 12 months from date of delivery
- Response to your inquiry within 24 hours
- We provide support in Chinese, English, French, German, Japanese and Spanish
- Extensive multi-media technical resources to help you
- We investigate all quality concerns to ensure our products perform to the highest standards

If the product does not perform as described on this datasheet, we will offer a refund or replacement. For full details of the Abpromise, please visit <https://www.abcam.com/abpromise> or contact our technical team.

### Terms and conditions

- Guarantee only valid for products bought direct from Abcam or one of our authorized distributors