


Product datasheet

Anti-KCNC1 antibody ab230686

2 Images

Overview

---

<b>Product name</b>	Anti-KCNC1 antibody
<b>Description</b>	Rabbit polyclonal to KCNC1
<b>Host species</b>	Rabbit
<b>Tested applications</b>	<b>Suitable for:</b> WB, IHC-P
<b>Species reactivity</b>	<b>Reacts with:</b> Rat, Human <b>Predicted to work with:</b> Mouse, Rabbit, Cow 
<b>Immunogen</b>	Synthetic peptide corresponding to Human KCNC1 (internal sequence) conjugated to keyhole limpet haemocyanin. Database link: <a href="#">P48547</a>
<b>Positive control</b>	WB: HepG2 whole cell lysate; rat brain whole cell lysate. IHC-P: Human cerebellum tissue.
<b>General notes</b>	<p>Reproducibility is key to advancing scientific discovery and accelerating scientists' next breakthrough.</p> <p>Abcam is leading the way with our range of recombinant antibodies, knockout-validated antibodies and knockout cell lines, all of which support improved reproducibility.</p> <p>We are also planning to innovate the way in which we present recommended applications and species on our product datasheets, so that only applications &amp; species that have been tested in our own labs, our suppliers or by selected trusted collaborators are covered by our Abpromise™ guarantee.</p> <p>In preparation for this, we have started to update the applications &amp; species that this product is Abpromise guaranteed for.</p> <p>We are also updating the applications &amp; species that this product has been “predicted to work with,” however this information is not covered by our Abpromise guarantee.</p> <p>Applications &amp; species from publications and Abreviews that have not been tested in our own labs or in those of our suppliers are not covered by the Abpromise guarantee.</p> <p>Please check that this product meets your needs before purchasing. If you have any questions, special requirements or concerns, please send us an inquiry and/or contact our Support team ahead of purchase. Recommended alternatives for this product can be found below, as well as customer reviews and Q&amp;As.</p>

Properties

---

<b>Form</b>	Liquid
<b>Storage instructions</b>	Shipped at 4°C. Store at +4°C short term (1-2 weeks). Upon delivery aliquot. Store at -20°C long term. Avoid freeze / thaw cycle.
<b>Storage buffer</b>	pH: 7.30 Preservative: 0.01% Sodium azide Constituents: PBS, 30% Glycerol
<b>Purity</b>	Immunogen affinity purified
<b>Clonality</b>	Polyclonal
<b>Isotype</b>	IgG

## Applications

Our [Abpromise guarantee](#) covers the use of **ab230686** in the following tested applications.

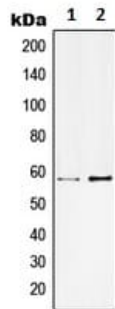
The application notes include recommended starting dilutions; optimal dilutions/concentrations should be determined by the end user.

Application	Abreviews	Notes
WB		1/500 - 1/1000. Predicted molecular weight: 58 kDa.
IHC-P		1/100.

## Target

<b>Function</b>	Mediates the voltage-dependent potassium ion permeability of excitable membranes. Assuming opened or closed conformations in response to the voltage difference across the membrane, the protein forms a potassium-selective channel through which potassium ions may pass in accordance with their electrochemical gradient. Can form functional homotetrameric channels and heterotetrameric channels that contain variable proportions of KCNC2, and possibly other family members as well. Contributes to fire sustained trains of very brief action potentials at high frequency in pallidal neurons.
<b>Involvement in disease</b>	Epilepsy, progressive myoclonic 7
<b>Sequence similarities</b>	Belongs to the potassium channel family. C (Shaw) (TC 1.A.1.2) subfamily. Kv3.1/KCNC1 sub-subfamily.
<b>Domain</b>	The segment S4 is probably the voltage-sensor and is characterized by a series of positively charged amino acids at every third position. The tail may be important in modulation of channel activity and/or targeting of the channel to specific subcellular compartments.
<b>Cellular localization</b>	Cell membrane.

## Images



Western blot - Anti-KCNC1 antibody (ab230686)

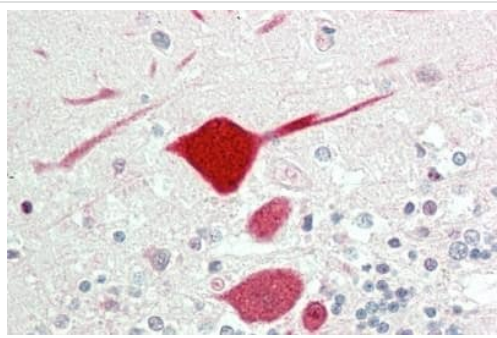
**All lanes :** Anti-KCNC1 antibody (ab230686) at 1/500 dilution

**Lane 1 :** HepG2 (human liver hepatocellular carcinoma cell line) whole cell lysate

**Lane 2 :** Rat brain whole cell lysate

Developed using the ECL technique.

**Predicted band size:** 58 kDa



Immunohistochemistry (Formalin/PFA-fixed paraffin-embedded sections) - Anti-KCNC1 antibody (ab230686)

Formalin-fixed, paraffin-embedded human cerebellum tissue stained for KCNC1 with ab230686 at 1/100 dilution in immunohistochemical analysis.

**Please note:** All products are "FOR RESEARCH USE ONLY. NOT FOR USE IN DIAGNOSTIC PROCEDURES"

### Our Abpromise to you: Quality guaranteed and expert technical support

- Replacement or refund for products not performing as stated on the datasheet
- Valid for 12 months from date of delivery
- Response to your inquiry within 24 hours
- We provide support in Chinese, English, French, German, Japanese and Spanish
- Extensive multi-media technical resources to help you
- We investigate all quality concerns to ensure our products perform to the highest standards

If the product does not perform as described on this datasheet, we will offer a refund or replacement. For full details of the Abpromise, please visit <https://www.abcam.com/abpromise> or contact our technical team.

### Terms and conditions

- Guarantee only valid for products bought direct from Abcam or one of our authorized distributors