

## Product datasheet

# Anti-KCNJ5 antibody [8D2] ab219074

[2 Images](#)

### Overview

<b>Product name</b>	Anti-KCNJ5 antibody [8D2]
<b>Description</b>	Mouse monoclonal [8D2] to KCNJ5
<b>Host species</b>	Mouse
<b>Tested applications</b>	<b>Suitable for:</b> WB, IHC-P
<b>Species reactivity</b>	<b>Reacts with:</b> Human <b>Predicted to work with:</b> Mouse, Rat, Cow, Pig
<b>Immunogen</b>	Recombinant fragment (GST-tag) corresponding to Human KCNJ5 aa 321-419. NCBI Accession No. NP_000881.3. Sequence:  SYMDTEVLWGHFRFTPVLTLKGFYEVDYNTFHDTYETNTP SCCAKELAEM KREGRLQLPSPPLLGGCAEAGLDAAEQNEEDEPKGL GGSREARGSV  Database link: <a href="#">P48544</a>  <a href="#">Run BLAST with</a> <a href="#">Run BLAST with</a>
<b>Positive control</b>	Human adrenal tissue; K562 cell lysate.
<b>General notes</b>	<p>Reproducibility is key to advancing scientific discovery and accelerating scientists' next breakthrough.</p> <p>Abcam is leading the way with our range of recombinant antibodies, knockout-validated antibodies and knockout cell lines, all of which support improved reproducibility.</p> <p>We are also planning to innovate the way in which we present recommended applications and species on our product datasheets, so that only applications &amp; species that have been tested in our own labs, our suppliers or by selected trusted collaborators are covered by our Abpromise™ guarantee.</p> <p>In preparation for this, we have started to update the applications &amp; species that this product is Abpromise guaranteed for.</p> <p>We are also updating the applications &amp; species that this product has been “predicted to work with,” however this information is not covered by our Abpromise guarantee.</p> <p>Applications &amp; species from publications and Abreviews that have not been tested in our own labs or in those of our suppliers are not covered by the Abpromise guarantee.</p> <p>Please check that this product meets your needs before purchasing. If you have any questions,</p>

special requirements or concerns, please send us an inquiry and/or contact our Support team ahead of purchase. Recommended alternatives for this product can be found below, as well as customer reviews and Q&As.

## Properties

---

<b>Form</b>	Liquid
<b>Storage instructions</b>	Shipped at 4°C. Store at +4°C short term (1-2 weeks). Upon delivery aliquot. Store at -20°C long term. Avoid freeze / thaw cycle.
<b>Storage buffer</b>	pH: 7.40 Constituent: 100% PBS
<b>Purity</b>	Protein A purified
<b>Clonality</b>	Monoclonal
<b>Clone number</b>	8D2
<b>Isotype</b>	IgG2a
<b>Light chain type</b>	kappa

## Applications

---

Our [Abpromise guarantee](#) covers the use of **ab219074** in the following tested applications.

The application notes include recommended starting dilutions; optimal dilutions/concentrations should be determined by the end user.

Application	Abreviews	Notes
WB		Use at an assay dependent concentration. Predicted molecular weight: 48 kDa.
IHC-P		Use a concentration of 10 µg/ml.

## Target

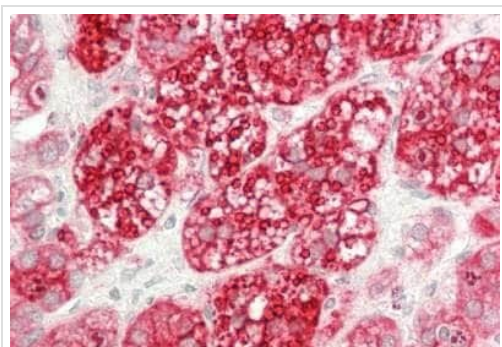
---

<b>Function</b>	This potassium channel is controlled by G proteins. Inward rectifier potassium channels are characterized by a greater tendency to allow potassium to flow into the cell rather than out of it. Their voltage dependence is regulated by the concentration of extracellular potassium; as external potassium is raised, the voltage range of the channel opening shifts to more positive voltages. The inward rectification is mainly due to the blockage of outward current by internal magnesium. Can be blocked by external barium.
<b>Tissue specificity</b>	Islets, exocrine pancreas and heart.
<b>Involvement in disease</b>	Defects in KCNJ5 are the cause of long QT syndrome type 13 (LQT13) [MIM:613485]. It is a heart disorder characterized by a prolonged QT interval on the ECG and polymorphic ventricular arrhythmias. They cause syncope and sudden death in response to exercise or emotional stress, and can present with a sentinel event of sudden cardiac death in infancy.
<b>Sequence similarities</b>	Belongs to the inward rectifier-type potassium channel (TC 1.A.2.1) family. KCNJ5 subfamily.
<b>Cellular localization</b>	Membrane.

---

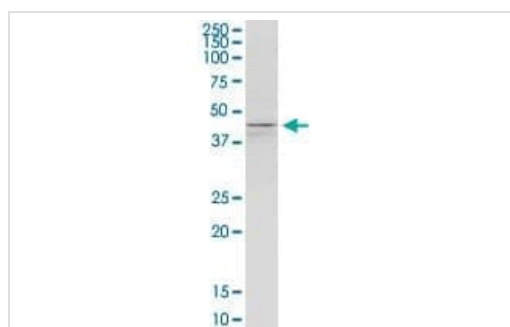
## Images

---



Immunohistochemistry (Formalin/PFA-fixed paraffin-embedded sections) - Anti-KCNJ5 antibody [8D2] (ab219074)

Immunohistochemical analysis of formalin-fixed, paraffin-embedded Human adrenal tissue labeling KCNJ5 using ab219074 at 10 µg/ml.



Western blot - Anti-KCNJ5 antibody [8D2] (ab219074)

Anti-KCNJ5 antibody [8D2] (ab219074) + K562 cell lysate

**Predicted band size:** 48 kDa

**Please note:** All products are "FOR RESEARCH USE ONLY. NOT FOR USE IN DIAGNOSTIC PROCEDURES"

### Our Abpromise to you: Quality guaranteed and expert technical support

---

- Replacement or refund for products not performing as stated on the datasheet
- Valid for 12 months from date of delivery
- Response to your inquiry within 24 hours
- We provide support in Chinese, English, French, German, Japanese and Spanish
- Extensive multi-media technical resources to help you
- We investigate all quality concerns to ensure our products perform to the highest standards

If the product does not perform as described on this datasheet, we will offer a refund or replacement. For full details of the Abpromise, please visit <https://www.abcam.com/abpromise> or contact our technical team.

### Terms and conditions

---

- Guarantee only valid for products bought direct from Abcam or one of our authorized distributors