



Product datasheet

Anti-KCNK6 antibody ab224656

1 Image

Overview

<b>Product name</b>	Anti-KCNK6 antibody		
<b>Description</b>	Rabbit polyclonal to KCNK6		
<b>Host species</b>	Rabbit		
<b>Tested applications</b>	<b>Suitable for:</b> IHC-P		
<b>Species reactivity</b>	<b>Reacts with:</b> Human		
<b>Immunogen</b>	Recombinant fragment corresponding to Human KCNK6 aa 253-308. Sequence:  LQTFRHVSDLHGLTEILLPPPCPASFNADEDDRVDIL GPQPESHQQLSA SSHTDY  Database link: <a href="#">Q9Y257</a>	 <a href="#">Run BLAST with</a>	 <a href="#">Run BLAST with</a>
<b>Positive control</b>	IHC-P: Human placenta tissue.		

Properties

<b>Form</b>	Liquid
<b>Storage instructions</b>	Shipped at 4°C. Store at +4°C short term (1-2 weeks). Upon delivery aliquot. Store at -20°C long term. Avoid freeze / thaw cycle.
<b>Storage buffer</b>	pH: 7.20 Preservative: 0.02% Sodium azide Constituents: 40% Glycerol, PBS
<b>Purity</b>	Immunogen affinity purified
<b>Clonality</b>	Polyclonal
<b>Isotype</b>	IgG

Applications

Our [Abpromise guarantee](#) covers the use of **ab224656** in the following tested applications.

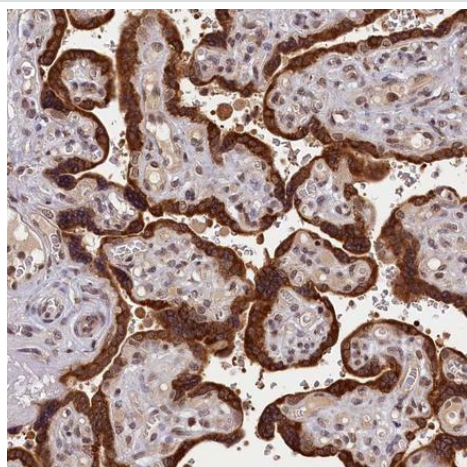
The application notes include recommended starting dilutions; optimal dilutions/concentrations should be determined by the end user.

Application	Abreviews	Notes
IHC-P		1/200 - 1/500. Perform heat mediated antigen retrieval with citrate buffer pH 6 before commencing with IHC staining protocol.

## Target

<b>Function</b>	Exhibits outward rectification in a physiological K(+) gradient and mild inward rectification in symmetrical K(+) conditions.
<b>Tissue specificity</b>	Widespread expression, detected in all tissues tested except for skeletal muscle. Strongest expression in placenta, pancreas, heart, colon and spleen, lower levels detected in peripheral blood leukocytes, lung, liver, kidney and thymus. Lowest expression detected in brain.
<b>Sequence similarities</b>	Belongs to the two pore domain potassium channel (TC 1.A.1.8) family.
<b>Cellular localization</b>	Membrane.

## Images



Paraffin-embedded human placenta tissue stained for KCNK6 using ab224656 at 1/200 dilution in immunohistochemical analysis.

Immunohistochemistry (Formalin/PFA-fixed paraffin-embedded sections) - Anti-KCNK6 antibody (ab224656)

**Please note:** All products are "FOR RESEARCH USE ONLY. NOT FOR USE IN DIAGNOSTIC PROCEDURES"

## Our Abpromise to you: Quality guaranteed and expert technical support

- Replacement or refund for products not performing as stated on the datasheet
- Valid for 12 months from date of delivery
- Response to your inquiry within 24 hours
- We provide support in Chinese, English, French, German, Japanese and Spanish
- Extensive multi-media technical resources to help you

- We investigate all quality concerns to ensure our products perform to the highest standards

If the product does not perform as described on this datasheet, we will offer a refund or replacement. For full details of the Abpromise, please visit <https://www.abcam.com/abpromise> or contact our technical team.

### **Terms and conditions**

---

- Guarantee only valid for products bought direct from Abcam or one of our authorized distributors